

WOODWORKING INNOVATIONS

SPRING
2018

**Innovative products
and solutions for
Woodworkers,
Contractors and
Cabinet makers.**



Faceshields



**Diamond
Sharpening**



**Jigs &
Accessories**



Clamping



**Measuring &
Marking**



Router Bits



**Lubricants &
Bit Cleaner**

trend[®]
routing technology

WELCOME

The catalog is designed to introduce you to the ever increasing range of Trend's innovative and problem solving products in the North American market. For more detailed information, please access the Trend website at www.trend-usa.com where you will find comprehensive

product information, video content and dealer information. We will have exciting new product introductions planned for the second half of 2018 so please do visit our new web site often.

Jamie LaMuraglia
Vice-President Sales and Marketing



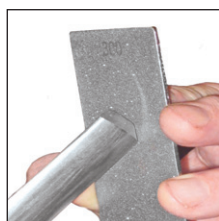
NEW PRODUCTS

Several new products have been added to the Trend unique industrial diamond sharpening range.

CREDIT CARD STONE

A coarse/extra coarse 300/180 grit sharpening stone. Ideal for woodworkers.

Product Reference
U*DWS/CC/CX
see page 3



POCKET STONE

An extra fine/extra coarse 1000/180 grit sharpening stone. Ideal for maintenance crews.

Product Reference
U*DWS/PP5/FX
see page 3



BENCH STONE

A fine/extra coarse 600/180 grit bench stone. Ideal for chisels and plane irons.

Product Reference
U*DWS/CP8/FX
see page 5



BENCH STONE SHARPENING KIT

A limited edition workshop diamond sharpening kit which includes everything you need to hone, polish and maintain your tools.

Product Reference
U*DWS/KIT/E
see page 8



MIRROR PASTE

Mirror finish polishing paste for chisels and plane irons.

Product Reference
U*DWS/MP/40
see page 9





CONTENTS

DIAMOND SHARPENING

TECHNICAL INFORMATION	2
DOUBLE-SIDED SLIP STONES	3
PRECISION BENCH STONES	4-5
DIAMOND FILES	6-7
DIAMOND KITS	8
DIAMOND ACCESSORIES	9



DOOR HANGING SOLUTIONS

HINGE JIGS	10-11
DOOR HANGING ACCESSORIES	12
LOCK JIGS	13



SAFETY

AIRSHIELD PRO	14
---------------	----



MEASURING & MARKING

DEPTH GAUGES	15
DIGITAL ANGLE RULES	15
MULTISCRIBE PRO	15



VARIJIG SYSTEM

VARIJIG CLAMP GUIDES	16
VARIJIG FRAME SYSTEM	17



ROUTER BITS & ACCESSORIES

ROUTER BITS	18-20
BEARINGS & COLLET EXTENSIONS	21
TOOL & BIT CLEANER	21



DIAMOND SHARPENING SOLUTIONS

A precision range of quality diamond whetstones for all sharpening needs.

- Double-sided stones.
- Excellence in engineering award.
- Suitable for all Carbide & HSS hand tools.
- Woodworking, turning, carving, gardening & domestic.
- Unprecedented five year guarantee.

5
YEAR
GUARANTEE



Working in association with Trend, sharpening expert James Barry has not only developed a complete range of precision quality diamond files, bench and slip stones but also a comprehensive range of sharpening solutions for all hand tools. His philosophy is simple and easy to follow:

"Maintaining your tooling yourself prolongs its life, improves efficiency and saves money. Do not be frightened or wary of the concept of 'in-house maintenance', it can be straight forward and easy. Businesses, tradesmen and hobbyists are looking at ways of reducing their costs and overheads, it is no longer a disposable society that we live in. The ability to be able to sharpen easily in seconds with precision diamond

whetstones from Trend achieves this aim. They are used worldwide by professionals, tradesmen and hobbyists alike. Sharpening is not rocket science and it is not complicated, it can be simple and easy, anyone can do it." Visit our website and watch our video guides on using the sharpening range.



FIND
James Barry Sharpening

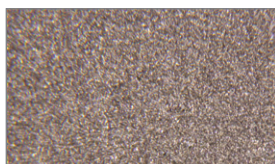


TECHNICAL INFORMATION & MAINTENANCE

CONSTRUCTION

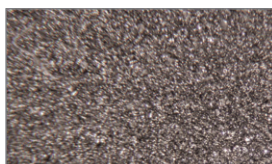
Monocrystalline micronized diamonds are electroplated onto a **precision substrate** pre-ground to $\pm 0.0005"$. Electroplating produces very durable products, hence an unprecedented 5 year warranty. After years of research the following micron sizes of diamond have been chosen as the optimum for performance for the great variety of hand tools that can be sharpened using this precision range.

The diamond is set into nickel, 2/3 buried and 1/3 exposed (locked in like an iceberg), thus the 1000 grit surface, 15 micron has a sharpening medium of 5 micron.



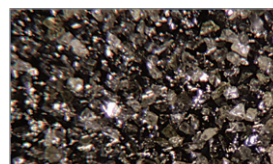
EXTRA FINE 15 Micron/1000 Grit

1000 grit is perfect for producing razor/polished edges. Still with a very fast speed of cut. Ideal for carvers, cabinet makers, hunting knives, all fine woodworking.



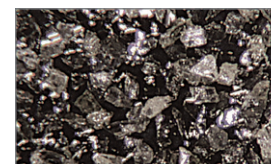
FINE 25 Micron/600 Grit

600 grit is the most suitable grade for general fine sharpening. Ideal for Carbide router bits, turning tool inserts and circular sawblades.



COARSE 50 Micron/300 Grit

300 grit has been chosen to optimise the speed of cut for when large stock removal is required. It is an ideal grit size for flattening the backs of chisels and plane blades. Also the popular choice for general joinery/site work and several applications in the woodturning industry. Ideal for all HSS.



EXTRA COARSE 70 Micron/180 Grit

180 grit is made for rapid stock removal. Ideal for flattening waterstones, planer blades and chisels, re-shouldering knives, and taking nicks out of edges.



MAINTENANCE

Trend Lapping Fluid should be used in conjunction with the cleaning block which will benefit the product and greatly lengthen its life span. We recommend that you use lapping fluid as a lubricant and NOT water or water based products on all diamond products to prevent rusting and clogging. It prevents the build-up of residue which occurs when sharpening.

Trend lapping fluid was designed in the engineering industry over 35 years ago solely for use on diamond abrasives. The Trend cleaning block is similar to a drawing office eraser, the consistency is soft and putty like. If the surface of the stone becomes discolored after constant use, the cleaning block restores it.

GUARANTEE

Use Trend lapping fluid to give an unprecedented 5 year guarantee on all the products in the Trend range of precision diamond whetstones, slip stones and files.

TIP

Use little pressure, let the diamond do the work, use the weight of the tool only on the surface of the stones.

www.trend-usa.com

DOUBLE-SIDED SLIP STONES

A comprehensive range of slip stones for all hand tooling.

- General Joinery
- Cabinet Making
- Turning
- Carving
- Pruners
- Loppers
- Shears
- Axes
- Budding Knives
- Scissors
- Kitchen Knives
- Serrated
- Straight Blades
- Hunting Knives
- Axes

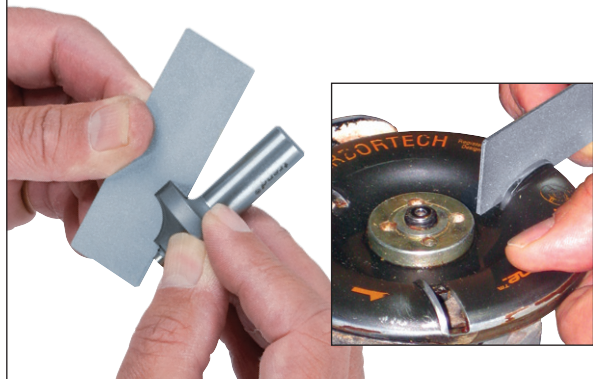


3" POCKET STONE

A double-sided fine/coarse 600/300 grit pocket stone. Ideal for small tools. Supplied in a wallet.

Product Reference
U*DWS/P3/FC

Size: 3" x 1" x 1/16", 600/300 grit



3" CREDIT CARD STONES

A double-sided coarse/extra coarse 300/180 grit credit card size stone. Ideal for woodturners, on-site chisel flattening and hunters in the field.

NEW

Product Reference
U*DWS/CC/CX

Size: 3-1/4" x 2" x 1/16", 300/180 grit



A double-sided fine/coarse 600/300 grit stone, with grit sizes for easy identification. Ideal for Carbide & HSS shaped router bits, Carbide inserts, woodturning tools and general woodworking. Supplied in a wallet.

Product Reference
U*DWS/CC/FC

Size: 3-1/4" x 2" x 1/16", 600/300 grit

5 X 1" POCKET STONES

A double-sided extra fine/extra coarse thin pocket stone. 1000/180 grit is ideal for hunters, farmers and maintenance crews. Supplied in a wallet.

NEW

Product Reference
U*DWS/PP5/FX

Size: 5" x 1" x 1/16"
1000/180 grit



A double-sided fine/coarse thin pocket stone for sawblades, small tools and knives. 600/300 grit is excellent for general purpose sharpening. Supplied in a wallet.

Product Reference
U*DWS/PP5/FC
Size: 5" x 1" x 1/16", 600/300 grit

3" CARVERS STONE

Almost twice as thick as standard credit card stones. Double-sided extra fine/fine 1000/600 grit stone has grit sizes for easy identification. Ideal for carving tools, Carbide and very fine edge sharpening.

Product Reference
U*DWS/CS/FF

Size: 3-1/4" x 2" x 1/16"
1000/600 grit





PRECISION DIAMOND BENCH STONES

Precision double-sided bench stones. Monocrystalline diamonds electroplated onto a substrate of $\pm 0.0005''$.

- Fine grit is suitable for achieving a razor, shaving edge in seconds. Ideal for cabinet making and fine woodworking.
- Coarse grit re-shapes and re-hones damaged edges and is ideal for site work, general joinery and flattening chisels and plane blades.
- Precision flatness enables the sharpening of Carbide and HSS inserts, spindle knives and clipper blades.
- Supplied with non-slip mat, cleaning block and wallet.
- Use with Trend lapping fluid.
- Grit size lasered on the surface.

EXTRA FINE SIDE
1000 Grit 15 Micron

COARSE SIDE
300 Grit 50 Micron

Product References

U*DWS/W6/FC

Size: 6" x 2" x 5/16"

U*DWS/B7/FC

Size: 7" x 2.5" x 3/8"

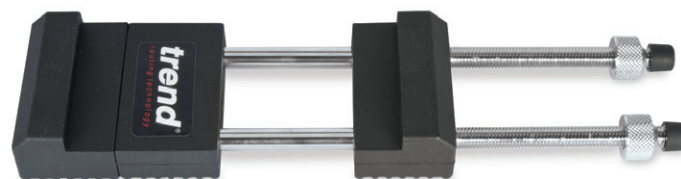


BENCH HOLDER

Adjustable to clamp bench stones securely.

Product Reference

U*DWS/BH/B7



SPECIFICATION:

Min. stone length 5-1/2"

Max. stone length 8-1/4"



CLASSIC PROFESSIONAL BENCH STONES

Unique combination of surfaces for optimum performance.

- Precision flatness, substrate pre-ground to $\pm 0.0005"$.
- Prevents 'snagging' in holes when sharpening small or pointed tooling.
- Clearance channels on the coarse surface disperses the residue faster when heavy stock removal is required thus increasing the speed of cut.
- Continuous diamond fine surface ideal for fine honing of knives, plane blades and chisels.
- Ideal for flattening and re-shaping damaged chisels and plane blades.
- Supplied with non-slip mat and cleaning block.

EXTRA FINE SIDE
1000 Grit 15 Micron
COARSE SIDE
300 Grit 50 Micron

Product Reference

U*DWS/CP8/FC

Size: 8" x 3" x 5/16"



NEW

An updated version of this popular classic bench stone.
Ideal for flattening oil or water stones.

- 180 grit extra coarse 70 micron surface with clearance channels for rapid stock removal in flattening and re-shouldering operations.
- 600 grit fine 25 micron continual diamond surface for removal of scratches left after flattening tools such as chisels and plane blades before progressing to fine honing and polishing. Suitable for quick fine edge for contractors and on-site honing. Ideal for honing Carbide inserts.

FINE SIDE
600 Grit 25 Micron
EXTRA COARSE SIDE
180 Grit 70 Micron

Product Reference

U*DWS/CP8/FX

Size: 8" x 3" x 5/16"



A UNIQUE RANGE OF DIAMOND TAPERED FILES



Sharpening solutions for all tooling used by professionals and hobbyists alike.

- Shaped Tools
- Gouges
- Forstner Bits
- Router Bits
- Sawblades
- Carbide Inserts
- Scissors
- Skews
- Scrapers
- Hoof Knives
- Pruners
- Serrated Blades
- Loppers
- Knives
- Axes

6" TAPERED FILE

Flat top and convex back tapered file.

- Fine 600 grit (25 micron) monocrystalline diamond.
- For all hand tools.
- Ideal for garden and domestic applications.

Product Reference

U*DWS/TF6/F

Size: 10-5/8" overall length with 6" diamond length.



3" FINE TAPERED FILE

A versatile half round/flat tapered file suitable for woodworking, gardening and domestic tooling.

- Precision quality taper file.
- Fine 400 grit (35 micron) monocrystalline diamond.
- Split plastic contoured hand-grip which is pinned either side of blade.
- Designed for woodturning and carving tools. Sharpens Carbide Tipped tooling in seconds.

Product Reference

U*DWS/TF3/F

Size: 6" overall length with 3" diamond length, thickness 3/32" to 1/16".



3" MINI FINE TAPERED FILE

- Precision quality taper file.
- Fine 600 grit (25 micron) monocrystalline diamond.
- Split plastic contoured hand-grip which is pinned either side of blade.
- Suitable for sharpening forstner bits, rotary carving, woodturning and carving tools as well as Carbide Tips. Unique size allows access to all difficult sharpening problems.

Product Reference

U*DWS/TF3M/F

Size: 6" overall length with 3" diamond length, thickness 1/8" to 1/16".



MACHINIST FILE FINE/COARSE

Double-sided 2-3/8 inch machinist file.

- Fine 600 grit (25 micron) and coarse 300 grit (50 micron) monocrystalline diamond.
- Diamond is electroplated onto a steel substrate which is molded onto the hardened plastic handle. The result is an extremely durable, versatile and strong product.
- Suitable for woodturning gouge internal and external bevel edges, skewers, carving tools, model engineering, router bits, small chisels, knives, serrated edges, metals and plastics, pruners, shears and all shaped tooling.

Product Reference

U*DWS/MF/FC

Size: 7" overall length with 2-3/8" diamond length,
width 7/8", thickness 3/8" to 1/4".



RETRACTABLE PENFILE

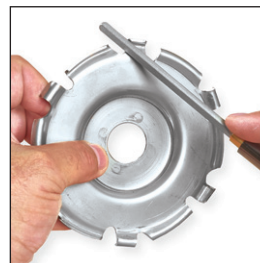
- Suitable for use on turning and carving tools, shaped tools and profiles.
- Also for woodworking, gardening and domestic use.
- Unscrew from body which then becomes a handle.

Product Reference

U*DWS/PFR/F

Size: 5-5/8" x 7/16".

File length: 3-5/8" x 15/64" diameter.



DIAMOND STEELS

Sharpens serrated, straight and scalloped blades easily in seconds.

- Use with little pressure, slowly and softly.
- Alternate strokes achieve a razor edge.

Product References

U*DWS/DS10/F Length 10"

U*DWS/DS12/F Length 12"



PRECISION NEEDLE FILES

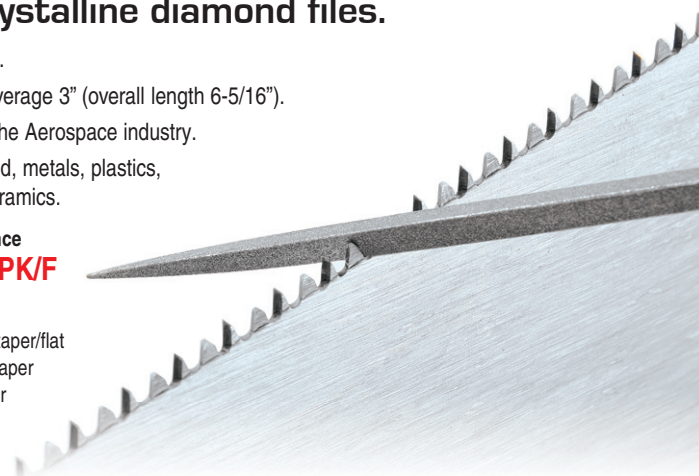
Four precision quality electroplated monocrystalline diamond files.

- Fine 600 grit.
- Diamond coverage 3" (overall length 6-5/16").
- Supplied to the Aerospace industry.
- Ideal for wood, metals, plastics, glass and ceramics.

Product Reference

U*DWS/NFPK/F

- Flat
- △ Half round/taper/flat
- △ Triangular/taper
- Round/taper



DIAMOND KITS

BENCH STONE SHARPENING KIT

NEW

The ultimate sharpening and maintenance kit for kitchen, hunting and pocket knives. It includes two 8" x 3" double-sided bench stones which employ four Trend diamond grits (180, 300, 600, 1000 grits), lapping fluid, leather strop, honing paste, cleaning block and detailed instructions on how to hone, polish and maintain your tools. Supplied in an aluminum carry case.

Product Reference

U*DWS/KIT/E

INCLUDES:

- U*DWS/CP8/FC** 8" x 3" extra fine/coarse double-sided bench stone in pouch
- U*DWS/CP8/FX** 8" x 3" fine/extra coarse double-sided bench stone in pouch
- U*DWS/LF/100** Lapping fluid (3.4 fl.oz)
- U*DWS/HP/US** Honing compound bar (6.4 oz)
- U*DWS/NM/W8** Non-slip mat
- U*DWS/HP/LS** Leather strop
- U*DWS/CB/A** Cleaning block
- U*BOOK/DWS** Booklet


LIMITED EDITION

HONING & POLISHING KIT

8" x 3" wide classic professional double-sided diamond stone. Ideal for chisels, plane blades and all hand tools. Honing guide ensures correct angles are maintained. Honing compound bar and leather strop gives a highly polished finish.

Product Reference

U*DWS/KIT/B



INCLUDES:

- U*DWS/CP8/FC** 8" x 3" bench stone in pouch
- U*DWS/HG/SET** Honing guide set
- U*DWS/LF/100** Lapping fluid (3.4 fl.oz)
- U*DWS/HP/LS** Leather strop
- U*DWS/HP/US** Honing compound bar (6.4 oz)
- U*DWS/NM/W8** Non-slip mat
- U*DWS/CB/A** Cleaning block
- U*BOOK/DWS** Booklet
- U*DVD/DWS/SME** DVD

COMPLETE SHARPENER KIT

Comprises a 3" mini half round/flat taper file, double-sided credit card stone, lapping fluid, cleaning block, DVD and booklet. For the sharpening of forstner bits, turning tools, router bits, chisels, Carbide & HSS inserts etc.

Product Reference

U*DWS/KIT/C



INCLUDES:

- U*DWS/CC/FC** Credit card stone with non-slip mat
- U*DWS/TF3M/F** 3" Mini taper file
- U*DWS/LF/100** Lapping fluid (3.4 fl.oz)
- U*DWS/CB/A** Cleaning block
- U*BOOK/DWS** Booklet
- U*DVD/DWS/SME** DVD

CREDIT CARD SHARPENER KIT

Comprises two double-sided credit card stones giving four different grit sizes, lapping fluid, cleaning block, DVD and booklet.

Product Reference

U*DWS/KIT/D



INCLUDES:

- U*DWS/CC/CX** Credit card stone, coarse 300 grit and extra coarse 180 grit with non-slip mat.
- U*DWS/CS/FF** Credit card stone, extra fine 1000 grit and fine 600 grit.
- U*DWS/LF/100** Lapping fluid (3.4 fl.oz)
- U*DWS/CB/A** Cleaning block
- U*BOOK/DWS** Booklet
- U*DVD/DWS/SME** DVD

SHARPENING ACCESSORIES

TREND LAPPING FLUID

Suitable for use with all quality diamond abrasive products.

- Lapping fluid is a petroleum based synthetic lubricant formulated to be used with diamond compounds.
- This advanced lubricant, with its penetrating qualities and oil/water solubility, not only increases the cutting action, but assures superior lubrication of every diamond particle throughout the honing process and greatly reduces the risk of rusting.
- Ideal for cleaning and reduces the risk of clogging in CBN wheels.

Product References

U*DWS/LF/100 (3.4 fl.oz)

U*DWS/LF/250 (8.5 fl.oz)

U*DWS/LF/500 (17 fl.oz)

Cleaning Block

U*DWS/CB/A

For all stones



MIRROR PASTE **NEW**

A micro ultra fine abrasive compound for a mirror finish on blades when used with a leather strop.

- Refines, hones and polishes carving tools, chisels, knives and planes.
- Mirror finish on cutting edge to give a clean cut.
- Apply paste to strop, rub to absorb and then stroke edge until polished finish.
- Supplied in screw top jar.



Product Reference
U*DWS/MP/40
(1.41 fl.oz)
2-3 micron,
8000 - 10000 grit

DIAMOND HONING COMPOUND BAR & STROP

For applying a polished finish to chisels and plane irons.

- Used to give a highly polished finish to a sharpened cutting edge.
- Includes 6.4 oz honing compound bar and leather strop.



Product Reference
U*DWS/HP/KIT

INCLUDES:

U*DWS/HP/US

Honing compound bar (6.4 oz)

U*DWS/HP/LS

Leather strop



HONING GUIDE

Set the perfect angle for your chisels and plane blades every time.

- Easy to set, complete with the unique angle setting plate which is preset for 25°, 30°, 35° and 40° angles.
 - Clamps from the sides to keep the tool square.
 - Clamps from 3/8" to 1-1/4" bevel edge chisels and up to 2-3/8" wide plane irons.
- Maximum tool thickness 0.275".



Product Reference
U*DWS/HG/SET



DOOR HANGING SOLUTIONS

CONTRACTOR

SKELETON HINGE JIG

Two piece jig made from aluminum extrusion for strength and is lightweight for easy transport. Recesses hinges in wooden doors and frames. Clean and accurate every time with minimal set-up time, both on-site and in joinery shops.

- Ideal for fitting a new door in an old frame.
- Fully adjustable quick release aperture blocks for use on fire doors and in renovation work.
- Suitable for timber based doors and square butt hinges. No need for marking out in conventional way.

Product Reference

U*H/JIG/C (Two piece)



CORNER CHISEL

See page 12 for details.

Product Reference

U*C/CHISEL

SPECIFICATION

Weight **6.4lbs**

Hinge sizes possible

Length min. **2-5/8"**

Length max. **5"**

Width min. **1/2"**

Width max. **1-3/8"**

Door sizes possible

Height min. **6' 5"**

Height max. **6' 10"**

Thickness min. **5/8"**

Thickness max. **2"**

* Please note for doors over 80-5/16" the bottom hinge will be higher than 9" up.

Hinge recess corners have a 15/64" radius, which will need to be squared off with a corner chisel
Ref. U*C/CHISEL.

INCLUDES:

- 1 x** 15/32" Shank router bit
- 3 x** Aperture block assemblies
- 4 x** Bradawls (short blade)
- 1 x** 5/8"Ø screw-in guide bush
- 1 x** 5/8"Ø Euro style guide bush
- 1 x** Fabric storage case



FEATURES:

- With fully adjustable quick release apertures.
- Fully adjustable hinge recesses.
- Can be used on max. 63/64" thick fixed stops.
- Also suitable for fire doors.
- Adjustable stops plus three pre-set stop positions for 25/32", 63/64" & 1 3/16" hinge leaf.



NEW

ACCESSORY

Screw-on guide bush used to create 1/4" radius hinges when a 1/2" bit is used.

Product Reference

U*GB/US/167



COMPATIBILITY
www.trend-uk.com/compatibility

VIDEO
TO
WATCH



trend-uk.com/video

CONTRACTOR HINGE JIG

Two piece contractor hinge jig with adjustable apertures to recess hinges in wooden doors and frames. Constructed from aluminum extrusion, it is easy to use with minimal setting-up time, completing the job accurately and quickly.

- Use on-site and in joinery shops to increase productivity with excellent results.
- Four apertures for fire door requirements.
- No need for marking out in the conventional way.

Product Reference

U*H/JIG/A (Two piece)

SPECIFICATION

Hinge sizes possible

Length min. 2-5/8"
Length max. 5"
Width min. 3/8"
Width max. 1-3/8"

Door sizes possible

Height min. 6' 5"
Height max. 6' 10"*
Thickness min. 5/8"
Thickness max. 2"

* Please note for doors over 80-5/16" the bottom hinge will be higher than 9" up.
Hinge recess corners have a 15/64" radius, which will need to be squared off with a corner chisel Ref. U*C/CHISEL.

INCLUDES:

- 1 x 15/32" Shank router bit
- 4 x Apertures
- 2 x Bradawls with spacer
- 1 x 5/8"Ø screw-in guide bush
- 1 x 5/8"Ø Euro style guide bush
- 1 x T-handle hex key
- 1 x 5/32" spacing gauge
- 1 x Fabric storage case

NEW

ACCESSORY

Screw-on guide bush used to create 1/4" radius hinges when a 1/2" bit is used.

Product Reference
U*GB/US/167

8 FOOT HINGE JIG

A three piece phenolic plastic hinge jig for 8 foot doors, supplied in a fabric carry case.

- Door size minimum 7' 11" (95") and maximum 8' (96").
- Three piece phenolic jig with alloy jointing plates.
- Hinge positions for 8 foot door can be set at 4-7/8" down, 30-3/8" down, 55-7/8" down and 81-3/8" down.

Product Reference

U*H/JIG/8FT (Three piece)

SPECIFICATION

Hinge sizes possible

Length min. 2-3/4"
Length max. 5-1/2"
Width min. 3/8"
Width max. 1-3/8"

Door sizes possible

Height min. 7' 11"
Height max. 8'
Thickness min. 5/8"
Thickness max. 2"

** A wide hinge can be accommodated if a 1/2" overhang offset is used.
Hinge recess corners have a 15/64" radius, which will need to be squared off with a corner chisel Ref. U*C/CHISEL.

INCLUDES:

- 1 x 15/32" Shank router bit
- 4 x Bradawls
- 1 x 5/8"Ø screw-in guide bush
- 1 x 5/8"Ø Euro style guide bush
- 1 x T-handle hex key
- 1 x Fabric storage case

www.trend-usa.com

DOOR HANGING ACCESSORIES

EASYScribe

A handheld offset pencil line drawing scribing tool with extendable plate.

- Suitable for a multitude of uses, its ease of use and superior ergonomics makes it indispensable for installation contractors.
- Uses include scribing in a door to the frame, scribing worktops, marking architrave offset, marking hinge recess depth, if cut by hand. Ideal for marking out flooring, worktops and tiles.
- Knurled fore grip sliding steel guide plate to allow up to 2" projection.
- Marks narrow pencil line 1/32" wide to ensure accuracy.
- Includes three spare graphites.

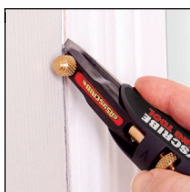
Product Reference
U*E/SCRIBE

SPARE PARTS

Graphite Leads

Pack of ten graphite leads.

U*E/SP/10



DOOR STAND

Holds door on its edge while routing a hinge recess and mortise for locks.

- Allows door to be tilted back to assist fitting into frame.
- Holds door securely while routing, planing and drilling.
- Adjustable clamp for doors 1-1/4" to 2-5/32" thick.
- Maximum door weight 127.8lbs.

Product Reference

U*D/STAND/A



DOOR LIFTER

Foot operated lifter to support door while fitting into frame.

- Slides under door and stays flat and stable until ready to activate the lift with users foot.
- Cam design with internal weight to keep level for ease of use.
- Ideal for pinned hinges.
- Lifts door 1-1/2" high and supports maximum weight 240lbs.

Product Reference
U*D/LIFT/A



DOOR & BOARD LIFTERS

Allows up, down and side to side movement for easy positioning and fixing of doors, panels and plasterboard.

- Foot operated lifter to support door while fitting into door frame, freeing up the users hands.
- Lifts door 2-3/8" high, 360 degree rotation.
- Foot pad protects floors.

Product Reference

Standard max. weight 165lbs.

U*D/LIFT/B

NEW

HEAVY DUTY max. weight 440lbs.

U*D/LIFT/C



DOOR CLAMP

Holds door while drilling and fitting locks.

- No set-up time needed.
- No more searching for alternative door stops.
- Padded to prevent door and floor damage.
- For doors up to 2-3/16" thick.

Product Reference
U*D/CLAMP/A



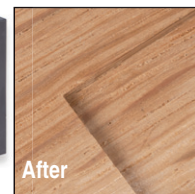
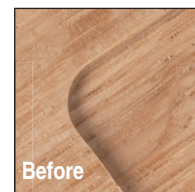
CORNER CHISEL

For squaring hinge and lock faceplate recesses.

- Spring loaded HSS anvil for a sharp cut and long life, can be resharpened.
- Locates in the rounded corner of the routed recess.
- One square blow with a hammer to square corners.
- Use with Trend Hinge and Lock Jigs.

Product Reference

U*C/CHISEL



LOCK JIGS

CONTRACTOR LOCK JIG

This jig uses a set of interchangeable templates to rout the mortise and faceplate recess for popular door locks.

- For most common sash mortise and dead locks, with up to 2-3/4" deep mortises and a 7/8" or 1" faceplate. Deeper mortises can be achieved with a suitable size of auger bit.
- Precision manufactured plates and body.

INCLUDES:

- 12 x Face plate templates
- 4 x Mortise templates
- 1 x 1/2" Shank 15/32" router bit
- 1 x 1-3/16" Screw-on guide bush
- 1 x 1-3/16" Guide bush collar

Product Reference
U*LOCK/JIG



trend-uk.com/video



COMPATIBILITY
www.trend-uk.com/compatibility

CONTRACTOR LARGE LOCK JIG

For routing the faceplate and mortise for larger locks quickly and accurately.

- Equipped with two templates for Baldwin locks with 8" x 1-1/4" and 8" and 1" faceplates.
- Suitable for doors 1-5/16" to 2-1/4" thick.
- An auger bit and drill is required to complete deep mortises.

INCLUDES:

- 1 x Adapter plate (to allow smaller templates to be fitted).
- 1 x 1/2" Shank 15/32" router bit
- 1 x 1-3/16" Screw-on guide bush
- 1 x 1-3/16" Guide bush collar

Product Reference
U*LOCK/JIG/A



COMPATIBILITY
www.trend-uk.com/compatibility

FULLY ADJUSTABLE TRADE LOCK JIG

For precision fitting of locks into doors. Fits lock faceplates, lengths up to 10".

- Quick and easy to set-up as jig has engraved markings on underside to allow set-up for doors 1-3/8", 1-3/4", 2" and 2-1/8".
- Suitable for doors 1-3/16" to 3-9/64" thick.
- Engraved for 5/8" and 3/4" lock widths and 7/8" and 1" faceplate widths.

INCLUDES:

- 2 x Setting blocks
- 1 x 1/2" Shank 15/32" router bit
- 1 x 1-3/16" Screw-on guide bush

Product Reference
U*LOCK/JIG/B



COMPATIBILITY
www.trend-uk.com/compatibility

Jig requires use of 1/2" shank plunge router with 3-1/8" plunging capacity and two quick action clamps.

www.trend-usa.com

trend
routing technology

13

SAFETY

AIRSHIELD PRO

Fully protected air circulating face shield for use with woodworking applications including turning, sanding and routing.

Utilized where particulates must be filtered in multiple industries including agricultural applications.

- A built-in quiet fan keeps a constant flow of filtered air across the face.
- Provides excellent protection from inhalation of harmful dust with twin fine dust filters.
- Protects eyes and face against flying debris.
- Filter efficiency 98%.
- Combination face-seal and hood improves protection.
- 8 hour battery.
- On-board battery charging.

Product Reference

U*AIR/PRO

SPECIFICATION

Rating _____ **DIY/Craftsman/Professional**
 Airflow min. _____ **5.6 cf/min**
 Airflow fully charged _____ **7.06 cf/min**
 Size of headband _____ **20-1/2"-24-1/2"**
 Size range _____ **6-3/8"-7-3/4"**
 Mean filtered particle size _____ **0.6 micron**
 Motor sound level _____ **70dB**
 Battery _____ **8 hrs**
 Weight _____ **2.2 lbs**

Eye protection to ANSI Z87+ (High energy impact). Respiratory protection (for reference only) NPF50 to EN 12941 TH2P. Not NIOSH approved.

ANSI Z87.1



ACCESSORIES

Clip-on Passive Ear Defenders

Comfortable and lightweight with durable ball joint design for airing and rest positions. Weight 6.2 oz, NRR22, CSA B.ANSI S3-19 1974.

U*AIR/P/6+

Remote Battery Cradle

U*AIR/P/7

To allow charging of battery independently from the U*AIR/PRO. Ideal when a spare battery is used.



REPLACEMENT PARTS

TH2P Filter Pack

U*AIR/P/1 (pair)

8 Hour Battery

U*AIR/P/4

Charger

U*AIR/P/5L (120v)

Replacement Visor Overlay - Clear

U*AIR/P/3C pack of 10



Audible low battery warning



8 hour battery

Single rechargeable Ni-MH battery for 8 hours use. Battery needs to be charged whilst fitted to the unit.

VIDEO
TO
WATCH



trend-uk.com/video

**ANSI Z87+
HIGH IMPACT
RATING**

INCLUDES:

- 1 x 8 Hour Battery
- 1 x Battery Charger
- 1 x Pair TH2P Fine Filters
- 1 x Airflow Indicator
- 1 x Clear Visor Overlay
- 1 x Storage Bag



MEASURING & MARKING

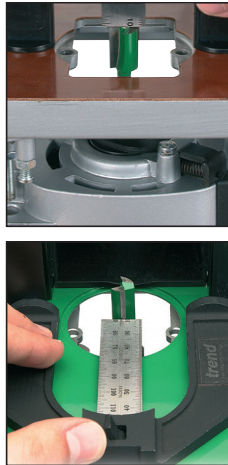
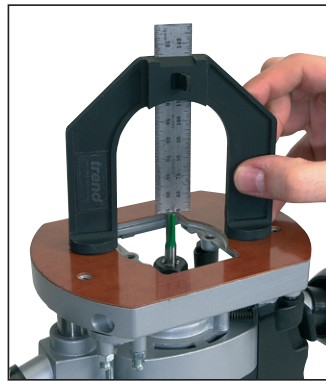
DEPTH GAUGE

Metal rule depth gauge to help set the height of router bits and sawblades with greater accuracy.

- Horizontal and vertical measuring.
- For hand routers, router tables and saw benches.
- 2-3/8" wide aperture and accurate to 1/32".
- 3-3/16" measurement range.
- U section plastic injection molding with unique cam lever lock.
- Steel rule dual metric and imperial scale.
- Self standing for setting bit depth on router tables and low profile for backfence adjustment.

Product Reference

U*GAUGE/1



METRIC & IMPERIAL DIGITAL DEPTH GAUGE

Horizontal and vertical measuring.

- For hand routers, router tables and saw benches.
- LCD readout for mm, inches & fractions with auto shut off 5 mins.
- Removable pin to allow hole depths to be measured. Pin can be parked on arm. Hole depth 2 inch.
- Self standing with magnetic feet and flat back.
- Injection plastic moulding with plastic rule.
- Read-out has relative co-ordinate and absolute function.
- 2-3/8" wide aperture.

Product Reference

U*GAUGE/D60



8" DIGITAL ANGLE FINDER

Calculates angles from 0° to 220°. Robust lightweight aluminum construction with 2 inch wide folding metal blade and locking function.

- Easy operation with three buttons on/off, hold and zero/ABS.
- Use on internal and external angles.
- Readout reads correctly when used in relative mode, and locks in ABS mode.
- Dual metric and imperial scale, with 90° angle checker on end of blade.
- Angles up to 360° can be reached when locking knob is removed.



Product Reference

U*DAF/8

DIGITAL ANGLE RULES

Calculates angles quickly and accurately.

- Digital display for angles.
- Two sizes 7" and 18-1/2" with two stainless steel rules with metric and imperial scale.
- Measuring range from 000.0° to 360.0° with an accuracy of 0.3°.

Product Reference

U*DAR/200

Size: 7"



Product Reference

U*DAR/500

Size: 18-1/2"

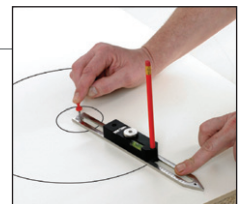
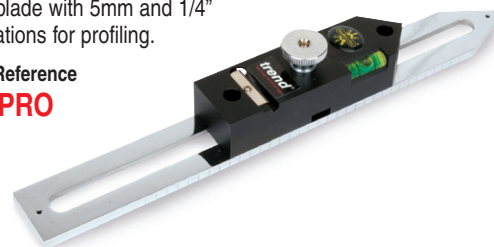
MULTISCRIBE

A profile matching tool used to transfer contours from one shape to another and marks onto various materials.

- 15 functions including parallel scribe, convex scribe, contour profile scribing and line block.
- Multi-function tool for a variety of marking out applications.
- For use by all trades, carpenters, joiners and builders etc.
- Built in spirit level and pencil sharpener.
- Steel blade with 5mm and 1/4" graduations for profiling.

Product Reference

U*MS/PRO



VARIJIG SYSTEM

VARIJIG SELF CLAMPING GUIDES

Self clamping, straight line clamp guides that use the Varijig low profile extrusion.

- For accurate guiding of routers, saws and jigsaws.
- Low profile extrusion with integral clamping of workpiece, double locking mechanism and two full length T-slots.
- Common Varijig extrusion to 24 inch (610mm), 36 inch (915mm) and 50 inch (1270mm) Clamp Guides.
- Metric and imperial sliding scale.
- Extrusion profile 5/8 inch (16mm) high x 2-1/8 inch (54mm) wide.
- Ref. VJS/CG/PRO8 is an extra wide clamp 5 inch (127mm) with four T-slots. Ideal for large sheet material, clamps up to 96 inches (2.44 metres).
- Jaws have fixing holes for accessories.



Router and bit
not included.

Product References

U*VJS/CG/24	24" / 610mm
U*VJS/CG/36	36" / 915mm
U*VJS/CG/50	50" / 1270mm
U*VJS/CG/PRO8	8' / 96" / 2440mm



Extra wide clamp
Ref. U*VJS/CG/PRO8

VARIJIG FRAME SYSTEM

Adjustable frame and guide for use with a router.

- Adjustable frame for rectangles and squares.
- Allows a router to cut recesses, slots, face panel moulds etc. Can also be used to create panel doors.
- Four lengths of 27-1/2" extrusion with dual metric/imperial measuring scales.
- Working area 23-1/2" x 23-1/2".
- Cross cut accuracy to 5 thou. A square is required to square frame before use.
- Use with a guide bush with minimum 5/16" spigot length, or use Unibase as guide.

Product Reference: **U*VARIJIG**

INCLUDES:

- 4 x Alloy Extrusions with Scales
- 4 x Corner Brackets
- 1 x Anti-tilt Shoe
- 1 x Anti-tilt Shoe Fixing Screw

REPLACEMENT PARTS

Frame Jointing Kit
Set of four corner jointing brackets.

U*VJS/FJK

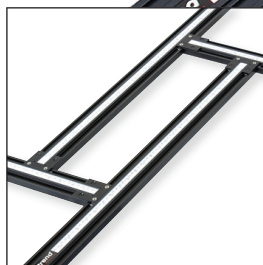
Router not included.

VIDEO TO WATCH

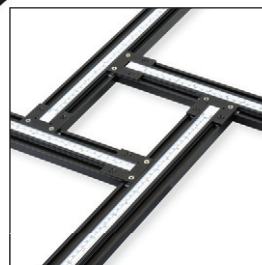
trend-uk.com/video



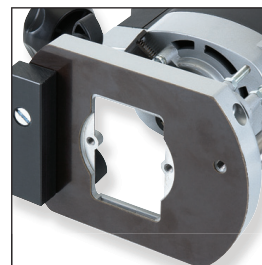
COMPATIBILITY
www.trend-uk.com/compatibility



Rectangles



Squares



Anti-tilt Shoe

VARIJIG 100" STRAIGHT GUIDE

For guiding routers, circular saws and jigsaws.

- Two lengths of extrusion with jointing piece to give maximum working length of 100" (2540mm). Reduced length for easier transport and storage.
- Clamps can slide along each extrusion.
- Maximum material clamping thickness 1-1/4".
- Adjustable friction washer on clamps prevent clamp from sliding too freely.
- One extrusion has dual metric/imperial scale.
- Can be combined with Varijig parts.

Product Reference: **U*VJS/G/100**

INCLUDES:

- 1 x 56" Alloy Extrusion with Scale
- 1 x 56" Alloy Extrusion
- 1 x Connecting Block
- 1 x Hex Key 4mm (5/32")
- 2 x 1-1/4" Sliding Friction Clamps



Crosscutting Saw not included.

VARIJIG EXTRA LONG PIVOT CLAMPS

Pair of pivoting sliding friction clamps with 2" clamping thickness.

- 360 degree clamp rotates to allow the pad of the clamp to be secured firmly to the workpiece.
- The clamp can be used with the Varijig system including the Varijig set, straight guides and angle guide.
- Aluminum body with soft pads to prevent marring of component.
- Friction lock design, so they can be positioned in extrusion without sliding out end when clamp lifted up.

Product Reference: **U*VJS/PCK/L**



OPTIONAL ACCESSORIES FOR VARIJIG SYSTEM

Clamp Kits (Fit to extrusions on Varijig System)

Pair of sliding friction clamps with 1-1/4" clamping thickness.

U*VJS/CK

Pair of long sliding friction clamps with 2" clamping thickness.

U*VJS/CK/L

Connecting Block Kit

Jointing block for extrusions. Can be used to join Varijig extrusions.

U*VJS/G/CB

Recommended 1-3/16" Guide Bush

Euro Style with extra long 3/8" spigot for U*VJS/TG/JIG or U*VARIJIG.

U*GB30/A

Screw-on Style.

U*GB/US/30

Universal Sub-base

Certain makes & models of router will require a Unibase to accept the Euro Style guide bush Ref. U*GB30/A.

U*UNIBASE



trend
routing technology

PROFESSIONAL ROUTER BITS

MICROGRAIN CARBIDE TIPPED

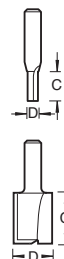
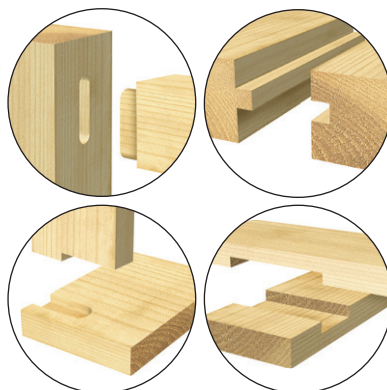


Micrograin Carbide Tipped router bits for use on hardwood, softwood, fiberboard, plywood and particle board.

- Micrograin Carbide Tips to ensure a perfect sharpness for extra life.
- Bits made to European Safety Standard EN847-1/2 which ensures quality materials are used. The tools are balanced and with round form to reduce user injury.
- Bits are two fluted unless specified otherwise.

HOW TO ORDER

Please state:
• Product Ref.
• Shank Dia.
• Grade, eg.
U*C015X1/4TC



STRAIGHT FLUTED TWO FLUTE STRAIGHT

TCT
TUNGSTEN
CARBIDE
TIPPED

Suitable for a wide range of applications such as engraving, grooving, rebating and shallow mortising.

- Use on softwoods, hardwoods, MDF, plywood and chipboard.
- All bits have a bottom cut feature.
- Metric diameters from 2mm to 50mm.

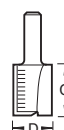
Product Ref.	D mm	D inch	C mm	C inch	OL mm	OL inch	Shank Dia. 1/4" 1/2"
U*C001C	2	5/64	5	13/64	55.5	2-3/16	✓ -
U*C001A	3	-	9.5	3/8	56.5	2-7/32	✓ -
U*C002	4	5/32	11.1	7/16	60	2-3/8	✓ -
U*C004	5	13/64	16	5/8	71.5	2-7/8	✓ -
U*C005	6	15/64	16	5/8	61	2-3/8	✓ ✓
U*C008	6.3	1/4	25.4	1	68.5	-	✓ -
U*C011	7.9	5/16	19.1	3/4	-	-	✓ -
U*C012	7.9	5/16	25.4	1	68.5	-	✓ -
U*C012A	8	5/16	25	63/64	-	-	✓ -
U*C012B	9	23/64	19	3/4	59.5	2-5/8	✓ ✓
U*C015	9.5	3/8	31.8	1 1/4	72.5	-	✓ -
U*C016C	10	25/64	25	1	58	-	✓ -
U*C019A	12	15/32	19	3/4	-	2-3/4	✓ -
U*C172	12	15/32	63	2-15/32	-	4-3/8	- ✓
U*C021A	12.55	31/64	25.4	1	-	-	✓ -
U*C021	12.7	1/2	25.4	1	-	-	- ✓
U*C022	12.7	1/2	31.8	1-1/4	72.5	-	✓
U*C153D	12.7	1/2	50	2	93	3-5/8	- ✓
U*C164	12.7	1/2	63	2-1/2	105	4-9/64	- ✓
U*C023A	14	35/64	19	3/4	59.5	-	✓ -
U*C024A	15	19/32	25	63/64	65.5	-	✓ -
U*C026	15.9	5/8	25.4	1	75.5	-	✓ -
U*C025A	16	5/8	19	3/4	60	-	✓ -
U*C028B	18.2	23/32	19	3/4	60	2-3/8	- ✓
U*C030B	19.1	3/4	50	2	92	3-5/8	- ✓
U*C033A	25	63/64	19	3/4	59.5	-	✓ -
U*C033E	26	1-1/32	25	1	63.5	-	- ✓
U*C033G	28	1-7/64	25	1	64	-	- ✓
U*C033H	28.5	1-1/8	25	1	67	2-19/32	- ✓
U*C033J	30	1-3/16	25	1	67	-	- ✓
U*C033K	31.8	1-1/4	25	1	63.5	2-1/2	- ✓
U*C033N	35	1-3/8	25	1	67	-	- ✓
U*C033Q	40	1-37/64	25	1	66	-	- ✓
U*C033W	50	1-31/32	25	1	64	-	- ✓

TWO FLUTE STRAIGHT METRIC SCALE

Suitable for a wide range of applications such as engraving, grooving, rebating and shallow mortising.

- Use on softwoods, hardwoods, MDF, plywood and chipboard.
- All bits have a bottom cut feature.

Product Ref.	D mm	D inch	C mm	C inch	OL mm	OL inch	Shank Dia. 1/4" 1/2"
U*C016S	10	25/64	19.1	3/4	60	2-3/8	✓ -
U*C021S	12.7	1/2	25.4	1	68	2-5/8	✓ ✓
U*C153S	12.7	1/2	50	2	98.5	3-5/8	- ✓



TRIMMING

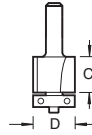
TCT
TUNGSTEN
CARBIDE
TIPPED

FLUSH TRIM

Used for trimming plastic or plywood overlays.

- Also for copy profiling with a template.

Product Ref	D mm	D inch	C mm	C inch	B mm	A degrees	Shank Dia. 1/4" 1/2"
U*C167	6.35	1/4	12.7	1/2	6.35	90	✓ -
U*C168	6.35	1/4	25.4	1	6.35	90	✓ -
U*C117	15.9	5/8	15.9	5/8	15.9	90	✓ -
U*C117A	19.1	3/4	25	1	15.9	90	- ✓
U*C117B	19.1	3/4	50	2	15.9	90	- ✓



Ref.
U*C117



TCT
TUNGSTEN
CARBIDE
TIPPED

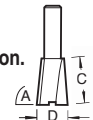
DOVETAILS

STAIR TRENCHING

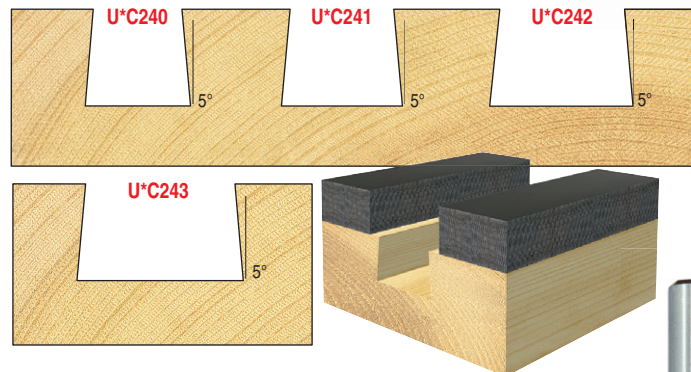
Purpose made for stair housing jigs with right hand rotation.

- Ensures tight fit of tread in string.

Product Ref	D mm	D inch	C mm	C inch	OL inch	A degrees	Shank Dia. 1/2"
U*C240	13.5	17/32	20	3/4	2-9/16	95	✓
U*C241	16	5/8	26	1	2-9/16	95	✓
U*C242	19	3/4	25.5	1	2-9/16	95	✓
U*C243	22	7/8	26	1	2-9/16	95	✓



Ref.
U*C241



ROUTER DRILLING

TCT
TUNGSTEN
CARBIDE
TIPPED

ROUTER DOWEL DRILLS

Metric dowel drills with diameters from 3mm to 10mm.

- These drills are used for shelf supports.
- The speed range is 1000 to 22000 rpm.
- Ref. U*C174 can be used with the Trend Shelf Support Template.
- Refs. U*C175, U*C176 & U*C177 can be used for 6, 8 & 10mm dowels.

Product Ref	D mm	C mm	C inch	OL mm	OL inch	Shank Dia. 1/4"
U*C180	3	14	35/64	57	2-1/4	✓
U*C222	4	35	1-3/8	57	2-1/4	✓
U*C174	5	35	1-3/8	57	2-1/4	✓
U*C175	6	35	1-3/8	70	2-3/4	✓
U*C176	8	35	1-3/8	70	2-3/4	✓
U*C177	10	35	1-3/8	70	2-3/4	✓

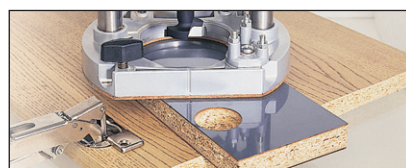
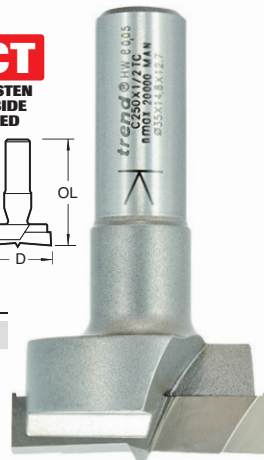
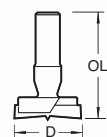
Ref.
U*C175



HIGH SPEED 35MM EURO HINGE BIT

This machine bit has a specially designed form of scriber to allow use at high speeds. For recessing circular hinges. For accurate repetitive routing, a template and guide bush fitted to the router base should be used.

Product Ref	D mm	D inch	OL mm	OL inch	Shank Dia. 1/2"
U*C250	35	1-3/8	60	2-3/8	✓

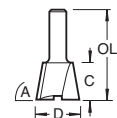


TWO FLUTE DOVETAILS

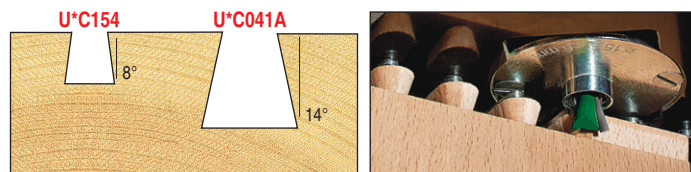
These dovetail bits produce a tight reliable joint for drawers, boxes etc. Can be used with Trend U*CDJ300, U*CDJ600 dovetail jigs. To suit user preference, the table shows angles from the horizontal and the profiles show angles from the vertical.

- Ref U*C154 has a Solid Carbide insert.

Product Ref	D mm	D inch	C mm	C inch	OL mm	OL inch	A degrees	Shank Dia. 1/4"
U*C154	6	15/64	6.9	9/32	57.5	2-1/4	98	✓
U*C041A	12.7	1/2	12.7	1/2	61	2-3/8	104	✓



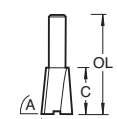
Ref.
U*C041A



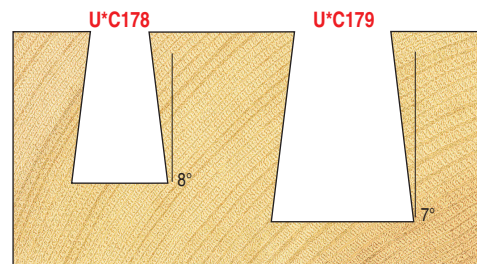
LARGE DOVETAILS

These dovetail bits are for the Trend Craft dovetail jig.

Product Ref	D mm	D inch	C mm	C inch	OL mm	OL inch	A degrees	Shank Dia. 1/4" 1/2"
U*C178	12.7	1/2	20	25/32	60	2-3/8	98	✓ -
U*C179	19.1	3/4	25	63/64	65	2-9/16	97	- ✓



Ref.
U*C178



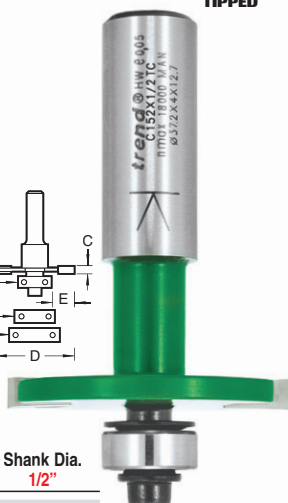
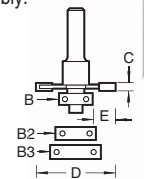
SLOTING & GROOVING

TCT
TUNGSTEN
CARBIDE
TIPPED

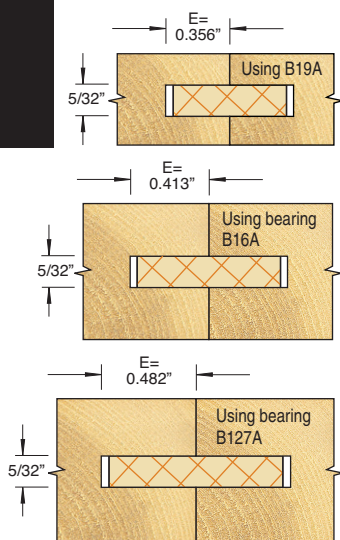
BISCUIT JOINTER SET

This two wing self-guiding Micrograin Carbide Tipped slotting bit is ideal for biscuit jointing.

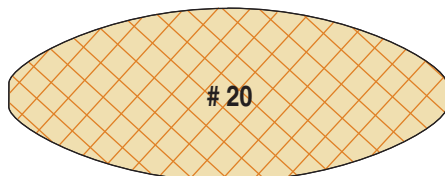
- The set is supplied with three ball bearing guides to suit the three sizes of biscuits available.
- A slightly longer cut than the length of the biscuit is required for ease of alignment during assembly.



Product Ref	C mm	C inch	D mm	B mm	B inch	Shank Dia. 1/2"
U*C152	4	5/32	37.2	12.7	1/2	✓



Profiles showing cross-section of biscuit joints.

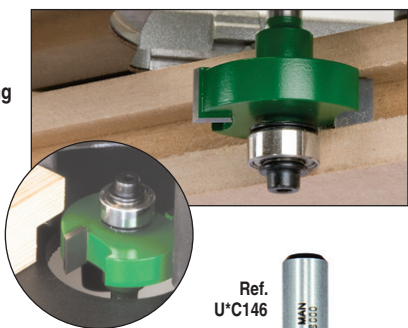


SLOTING BIT

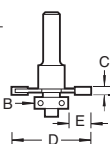
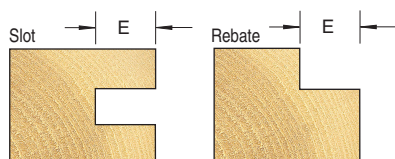
Two wing Micrograin Carbide Tipped slotting bits. A 1/2-inch diameter bearing is supplied with every bit giving a 3/8-inch groove depth.

Depth of cut can be changed by purchasing alternative bearing sizes. Easy to set-up and use, Hex key is supplied.

N.B. The grooving section of this tool cannot be detached from the shank.



Product Ref	C mm	C inch	D mm	D inch	B mm	B inch	E inch	Shank Dia. 1/4"
U*C143	3.2	1/8	31.8	1-1/4	12.7	1/2	3/8	✓
U*C144	4.7	3/16	31.8	1-1/4	12.7	1/2	3/8	✓
U*C145	6.3	1/4	31.8	1-1/4	12.7	1/2	3/8	✓
U*C146	8	5/16	31.8	1-1/4	12.7	1/2	3/8	✓
U*C147	9.5	3/8	31.8	1-1/4	12.7	1/2	3/8	✓



RADIUS & COVE

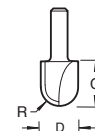
TCT
TUNGSTEN
CARBIDE
TIPPED

CORE BOX

This is ideal for engraving and decorative panel work.

- Made with Solid Tungsten Carbide insert, with two flutes.

Product Ref	R mm	D mm	C mm	C inch	OL mm	OL inch	Shank Dia. 1/2"
U*C051A	2.5	5	13	1/2	66	2-9/16	✓



EDGE MOULDING

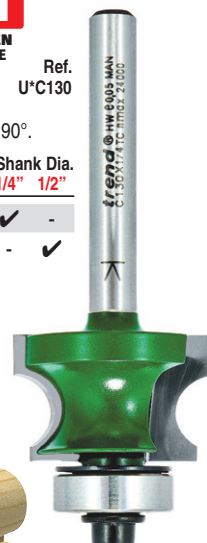
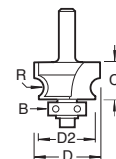
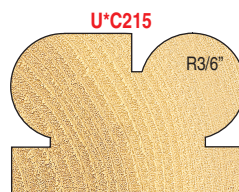
TCT
TUNGSTEN
CARBIDE
TIPPED

CORNER BEAD

Attractive edge moulds.

- A full corner bead can be produced by making a second pass at 90°.

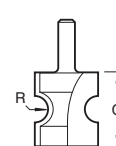
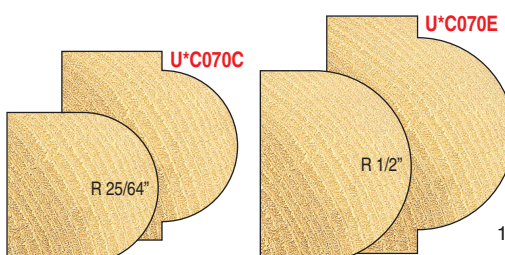
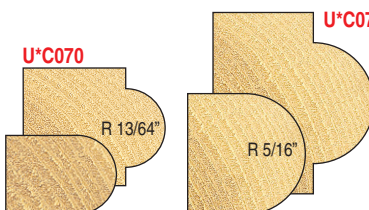
Product Ref	R mm	R inch	D mm	D inch	D2 inch	C mm	C inch	B mm	Shank Dia. 1/4" 1/2"
U*C130	4.8	3/16	26	1-1/32	7/8	16	5/8	15.9	✓ -
U*C215	7	9/32	31.9	1-1/4	1 1/8	22.5	7/8	16	- ✓



STAFF BEAD

These staff bead bits are ideal for producing nosings and attractive edges. Edge cut only.

Product Ref	R mm	R inch	D mm	D inch	C mm	C inch	OL inch	Shank Dia. 1/4" 1/2"
U*C070	5.2	13/64	20	25/32	19.1	3/4	2-1/4	✓ -
U*C070B	8	5/16	27	1-1/16	30	1-3/16	2-3/8	- ✓
U*C070C	10	25/64	33	1-19/64	35	1-3/8	2-7/8	- ✓
U*C070E	12.7	1/2	42.9	1-11/16	40	1-9/16	3-5/64	- ✓



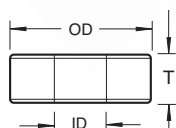
For stationary machines at max. recommended speeds as indicated.

BEARINGS

BEARING 3/16" BORE

Bearings are shielded to prevent penetration of dust and grease packed for life.

- They should not be cleaned with solvent or lubricated as this will dissolve the grease and cause premature failure.
- Scrape off any resin build-up.
- Always check the tightness of the fixing screw before using bit.



Product Ref	OD mm	OD inch	ID mm	ID inch	T mm	T inch
U*B127A	12.7	1/2	4.76	3/16	4.76	3/16
U*B16A	15.9	5/8	4.76	3/16	4.76	3/16
U*B19A	19.05	3/4	4.76	3/16	4.76	3/16



COLLET EXTENSIONS

For use in router tables where there is limited router bit shank length available.

- Precision machined one-piece steel body with a 1/2" shank, fitted with a multi-slit spring steel collet and collet nut.
- Increases bit spindle length by 2".
- Maximum tool diameter 1-31/32". Requires 3/4" & 7/8" A/F spanners.

Product References:

U*CE/127127

Collet extension 1/2" shank & collet

U*CE/127635

Collet extension 1/4" shank & collet

U*CE/CNS/635

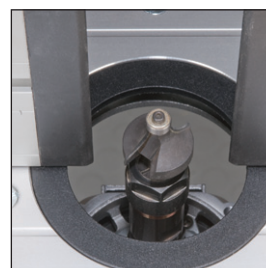
Collet & nut set 1/4"

U*CE/CNS/127

Collet & nut set 1/2"

U*CE/NUT

Spare collet nut



Insert rings removed for clarity.

COPYRIGHT

© 2018 Trend Routing Technology Inc. All rights reserved. No part of this publication may be reproduced or transmitted without prior permission. Trend Routing Technology Inc. cannot be held liable for any material rendered unusable, or for any form of consequential loss. The descriptions specifications and other claims made with respect to the products featured in this catalog are made as of the date of printing. Trend Routing Technology Inc. retains the right to discontinue production of or make improvements or other changes to any of its products without notice. Product packaging and other product literature should be consulted for current descriptions specifications and other claims relating to Trend Routing Technology Inc. products. Improvements or other changes to products shall not obligate Trend Routing Technology Inc. to make corresponding improvements or changes to products previously manufactured or sold. All Trademarks Acknowledged.

GUARANTEE TREND LIMITED TOOLING WARRANTY

All Trend tools are engineered and manufactured to the highest standards for optimum performance and service life. Trend warrants to the original purchaser at retail that each new Trend tool shall be free from defects in material and workmanship, subject to the guidelines below. Upon verification of failure or malfunction, Trend shall, at its option, within 28 days, repair or replace the tool. Subject to the guidelines below.

Guidelines

1. In the event of failure or malfunction, return the product, properly packaged and postage prepaid, to Trend Routing Technology Inc.
2. All implied warranties for Trend's power tools (INCLUDING MERCHANTABILITY AND FITNESS FOR PARTICULAR PURPOSE) are limited to the period of one year from the purchase date. Some states do not allow limitations on how long an implied warranty lasts, so the above limitation may not apply to you.
3. A warranty claim shall be limited to repair or replacement as stated in Trend's Limited Tool Warranty and in no event shall Trend be liable for any other direct, indirect or consequential damages, costs or expenses. INCIDENTAL AND CONSEQUENTIAL DAMAGES ARE EXCLUDED UNDER ALL WARRANTIES. Some states do not allow the exclusion or limitation of incidental or consequential damages, so the above may not apply to you.
4. Trend warranties give you specific legal rights, and you may also have other rights, which vary from state to state.
5. Trend warranties shall not be deemed to have failed their essential purpose while Trend is willing to repair or replace defective products.
6. Trend assumes no liability for defects or damage caused by abuse or misuse of any product or unauthorised service of any product. The product must have been used for its recommended purpose and not modified by sharpening or other changes. Normal wear and tear are not covered under Trend warranties.
7. Any action for breach of warranty must be commenced within one year after the accrual of the cause of action.

TOOL & BIT CLEANER

An industrial grade tool & bit cleaner to remove pitch and resin build-up from sawblades, router bits, planer blades etc.

- Industrial strength cleaner for a variety of uses. Acts as an excellent lubricant and increases tool life.
- Biodegradable, earth and human friendly. non-toxic and non-flammable.
- Provides rust and corrosion protection.
- Has unique properties which breaks the molecular bond and lifts the dirt from the tool as opposed to eating away the dirt like citrus cleaners and other chemicals.
- Can be used to keep table saw top rust free.
- Apply by spraying onto tool from a distance of 4", allow to soak in for a few minutes, then wipe clean with a cloth or sponge.
- 5 gallon buckets and 55 gallon drums available, please contact Trend. See website for safety data sheet.



trend-uk.com/video

Watch Alan Holtham give a full demonstration on the benefits of using Trend Tool and Bit Cleaner.

Product References:

U*CLEAN/500

Pump action spray bottle, size 18 fl.oz. (532ml).

U*CLEAN/5GAL

5 gallon bucket (to special order).

U*CLEAN/55GAL

55 gallon drum (to special order).



55 gallon drum shown

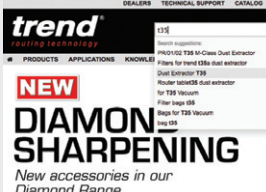


trend
routing technology

FEATURES

NEW INTELLIGENT SEARCH

The search feature is now faster and more accurate than ever before, helping you to find the products and content you're looking for quickly and easily.



LOCAL TREND DEALER SEARCH

With over 150 dealers across the US, find your nearest Trend dealer by simply entering your state or zip code into our dealer finder, or select your preferred online dealer directly from the product page.



KNOWLEDGE BASE

We've been innovating in Routing since 1955. We share our 60+ years of routing know-how through an extensive and easy to follow knowledge base, packed full of insightful articles and helpful how-to-guides.



DOCUMENT DOWNLOADS

Gain instant access to instructions, test reviews, wiring diagrams and safety sheets for all of our products.



WEBSITE HOME PAGE



FACEBOOK
/TrendRoutingTechnology



TWITTER
@TrendRouting



YOUTUBE
/TrendMachinery

SIGN UP FOR ENEWS
www.trend-usa.com

Telephone Toll Free (877) 918-7363
Retailer & Wholesaler Sales (336) 292-5051
Technical Support (336) 292-5051
General Fax (336) 292-5061
Email sales@trend-usa.com
Web www.trend-usa.com

Available from:



Trend Routing Technology Inc.
7351 West Friendly Avenue
Suite A
Greensboro, NC 27410

trend[®]
routing technology