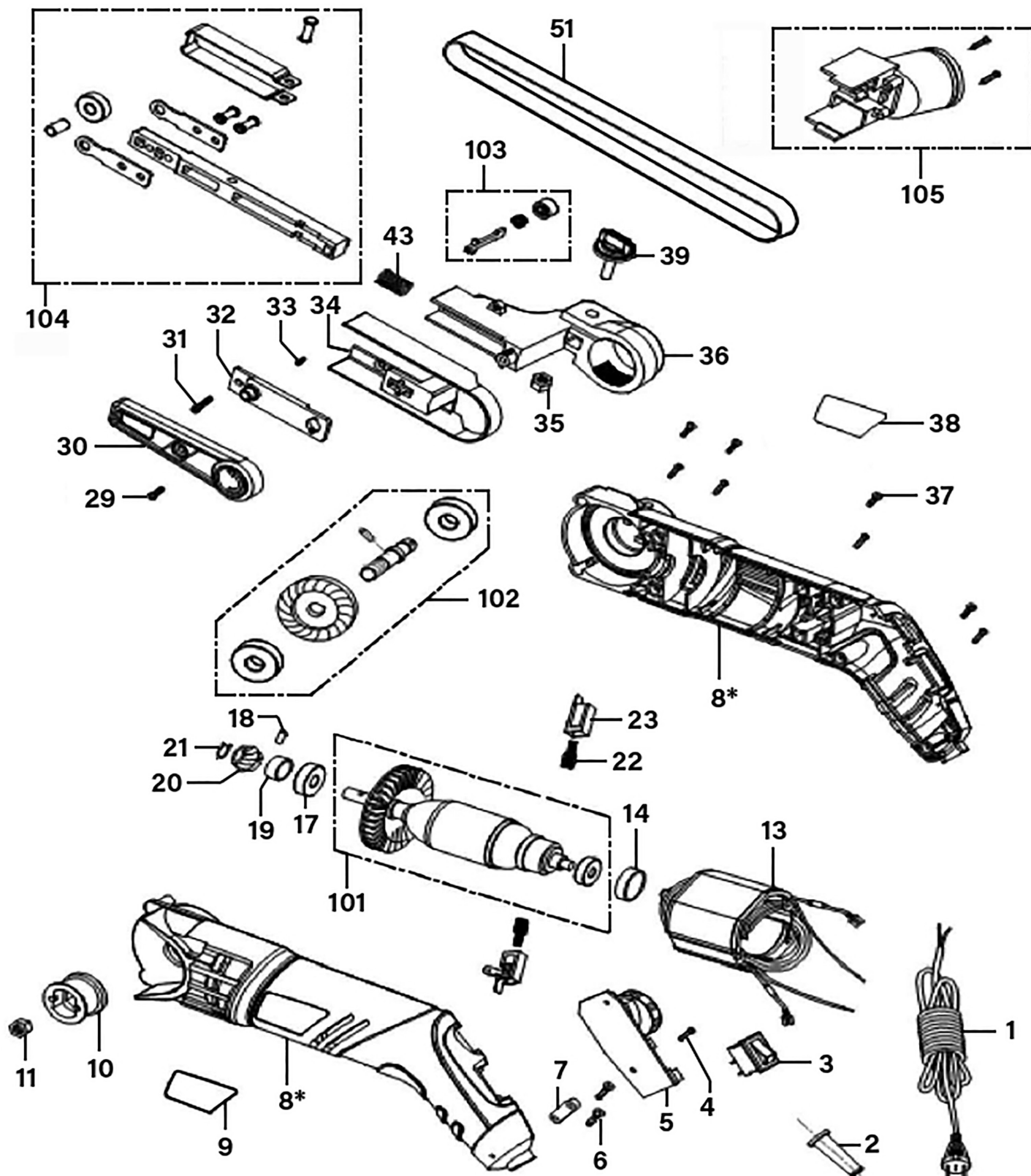


Parts Information:
12m Variable Speed Belt Sander
260W/230V
Model No: SBS260.V2



NOTE: It is our policy to continually improve products and as such we reserve the right to alter data, specifications and component parts without prior notice. There may be alternative versions of this product, please contact us should you require this information.

IMPORTANT: No liability is accepted for incorrect use of product. Spare parts must be fitted by a competent person

WARRANTY: Guarantee is 12 months from purchase date, proof of which will be required for any claim.

Jack Sealey Ltd t/a Sealey Group, Kempson Way, Suffolk Business Park, Bury St Edmunds, Suffolk, IP32 7AR UK

Jack Sealey (EU) Ltd t/a Sealey Group, Farney Street, Carrickmacross, Co. Monaghan, A81 PK68 Ireland

Tel: 01284 757500 • Email: sales@sealey.co.uk • Web: www.sealey.co.uk



TM

Parts Information:
12m Variable Speed Belt Sander
260W/230V
Model No: SBS260.V2

Item	Part No.	Description
1	SBS260.01	Power Cord
2	SBS260.02	Cable Sleeve
3	SBS260.V2-03	Switch
4	SBS260.04	Tapping Screw ST3.0 x 8mm (F)
5	SBS260.05	PCB, Circuit board, 65 x 30mm, (c/w Potentiometer & Connections)
6	SBS260.06	Rd Head S/T Screw M4.1 x 16mm Black
7	SBS260.07	Cable Clamp
8	SBS260.V2-08	Housing, Complete
9	SBS260.09	Housing Label, Left
10	SBS260.10	Drum Wheel
11	SN6.S	Steel Nut M6
13	SBS260.13	Stator
14	SBS260.14	Damping Ring
17	B/626-2RS	Bearing 626-2RS
18	SBS260.18	Round Pin
19	SBS260.19	Pin Bush
20	SBS260.20	Pinion
21	SBS260.21	Circlip for Shaft 6mm
22	SBS260.22	Carbon Brush (9.09 x 6.18 x 5.17 x 21.4mm)
23	SBS260.23	Carbon Brush Holder
29	SBS260.29	Pan Head Screw M4
30	SBS260.30	Sanding Belt Cover Board
31	SBS260.31	Pan Head Screw M4
32	SBS260.32	Cover Plate

Item	Part No.	Description
33	SBS260.33	Pan Head Screw M3
34	SBS260.34	Sanding Belt Guard
35	SN5.S	Steel Nut M5
36	SBS260.36	Base
37	SBS260.37	Tapping Screw ST3.0 x 12mm
38	SBS260.38	Housing Label, Right
39	SBS260.39	Knob, Ø19mm, M4x20mm Threaded (M)
46	SBS260.43	Spring Ø8mm
51	SBS35/B40GW	Sanding Belt 12 x 456mm 40Grit (Pack of 5) - Please see Catalogue
--	SBS35/B60GW	Sanding Belt 12 x 456mm 60Grit (Pack of 5) - Please see Catalogue
--	SBS35/B80GW	Sanding Belt 12 x 456mm 80Grit (Pack of 5) - Please see Catalogue
--	SBS35/B100GW	Sanding Belt 12 x 456mm 100Grit (Pack of 5) - Please see Catalogue
--	SBS35/B120GW	Sanding Belt 12 x 456mm 120Grit (Pack of 5) - Please see Catalogue
101	SBS260.101	Rotor Assembly
102	SBS260.102	Gear Wheel Assembly
103	SBS260.103	Button Assembly
104	SBS260.104	Tension Arm Assembly
105	SBS260.105	Dust Extraction Assembly
--	B/608-2RS	Bearing 608-2RS (Not Shown)
--	SBS260.104A	Tension Arm & Base Assembly (Parts 31, 32, 36, 43, 103 & 104)(Not Shown)

NOTE: It is our policy to continually improve products and as such we reserve the right to alter data, specifications and component parts without prior notice. There may be alternative versions of this product, please contact us should you require this information.

IMPORTANT: No liability is accepted for incorrect use of product. Spare parts must be fitted by a competent person

WARRANTY: Guarantee is 12 months from purchase date, proof of which will be required for any claim.

Jack Sealey Ltd t/a Sealey Group, Kempson Way, Suffolk Business Park, Bury St Edmunds, Suffolk, IP32 7AR UK

Jack Sealey (EU) Ltd t/a Sealey Group, Farney Street, Carrickmacross, Co. Monaghan, A81 PK68 Ireland

Tel: 01284 757500 • **Email:** sales@sealey.co.uk • **Web:** www.sealey.co.uk