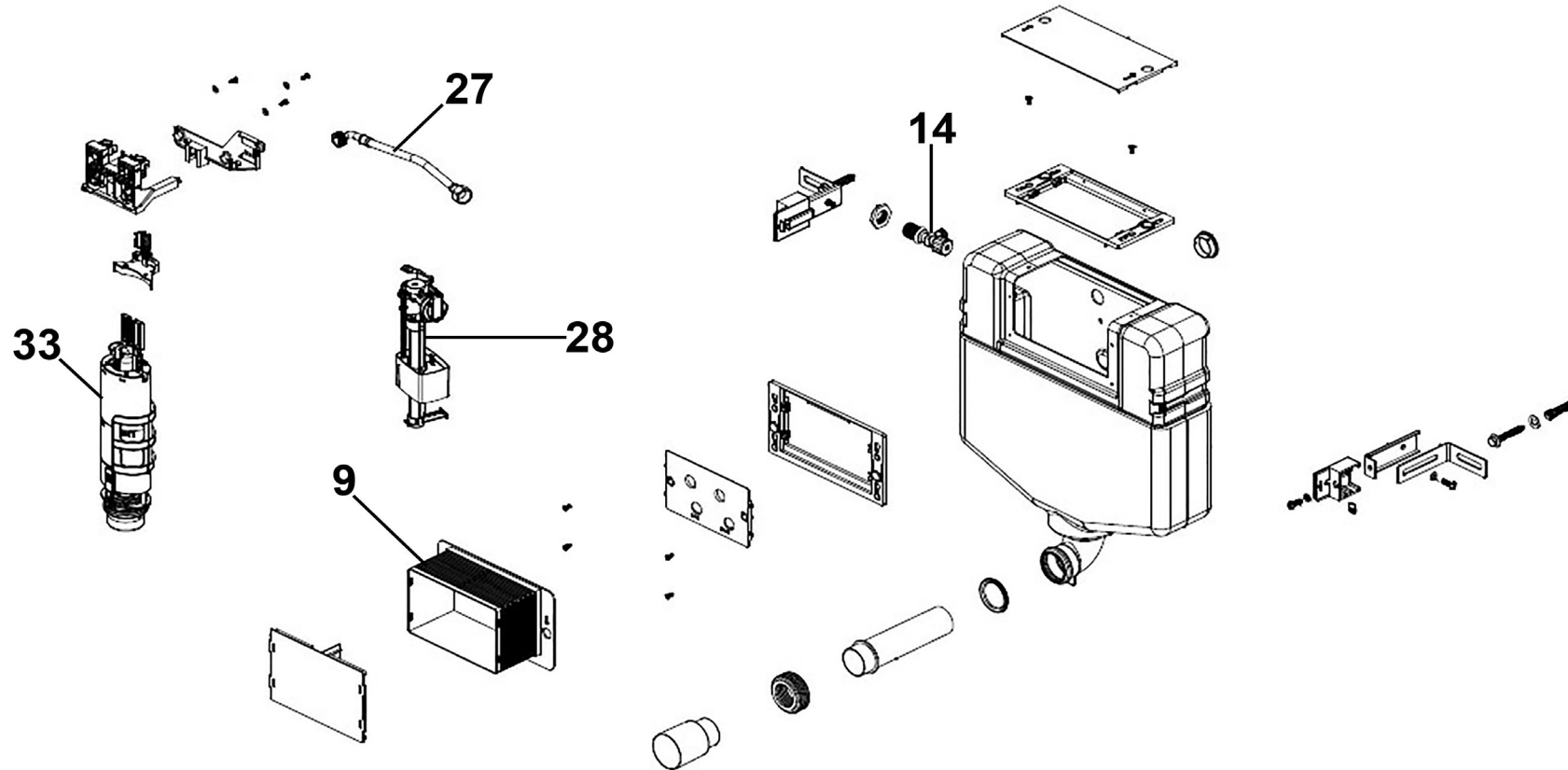


Parts Information:  
**Baridi Concealed Cistern with Long Flush Pipe, Dual Operation, Multi-Inlet  
 & Anti-Condensation Shell**  
**Model No: DH402**



Item	Part No.	Description
9	DH11401	Protective Case
14	DH11399	Stop Valve
27	DH11400	Flexible Hose

Item	Part No.	Description
28	DH11397	Inlet Valve
33	DH11398	Flush Valve

**NOTE:** It is our policy to continually improve products and as such we reserve the right to alter data, specifications and component parts without prior notice.

There may be alternative versions of this product, please contact us should you require this information.

**IMPORTANT:** No liability is accepted for incorrect use of product. Spare parts must be fitted by a competent person

**WARRANTY:** Guarantee is 12 months from purchase date, proof of which will be required for any claim.

Jack Sealey Ltd t/a Baridi, Kempson Way, Suffolk Business Park, Bury St Edmunds, Suffolk, IP32 7AR UK

Jack Sealey (EU) Ltd t/a Baridi, Farney Street, Carrickmacross, Co. Monaghan, A81 PK68 Ireland

Tel: 01284 757575 • Email: sales@baridi.co.uk • Web: www.baridi.co.uk