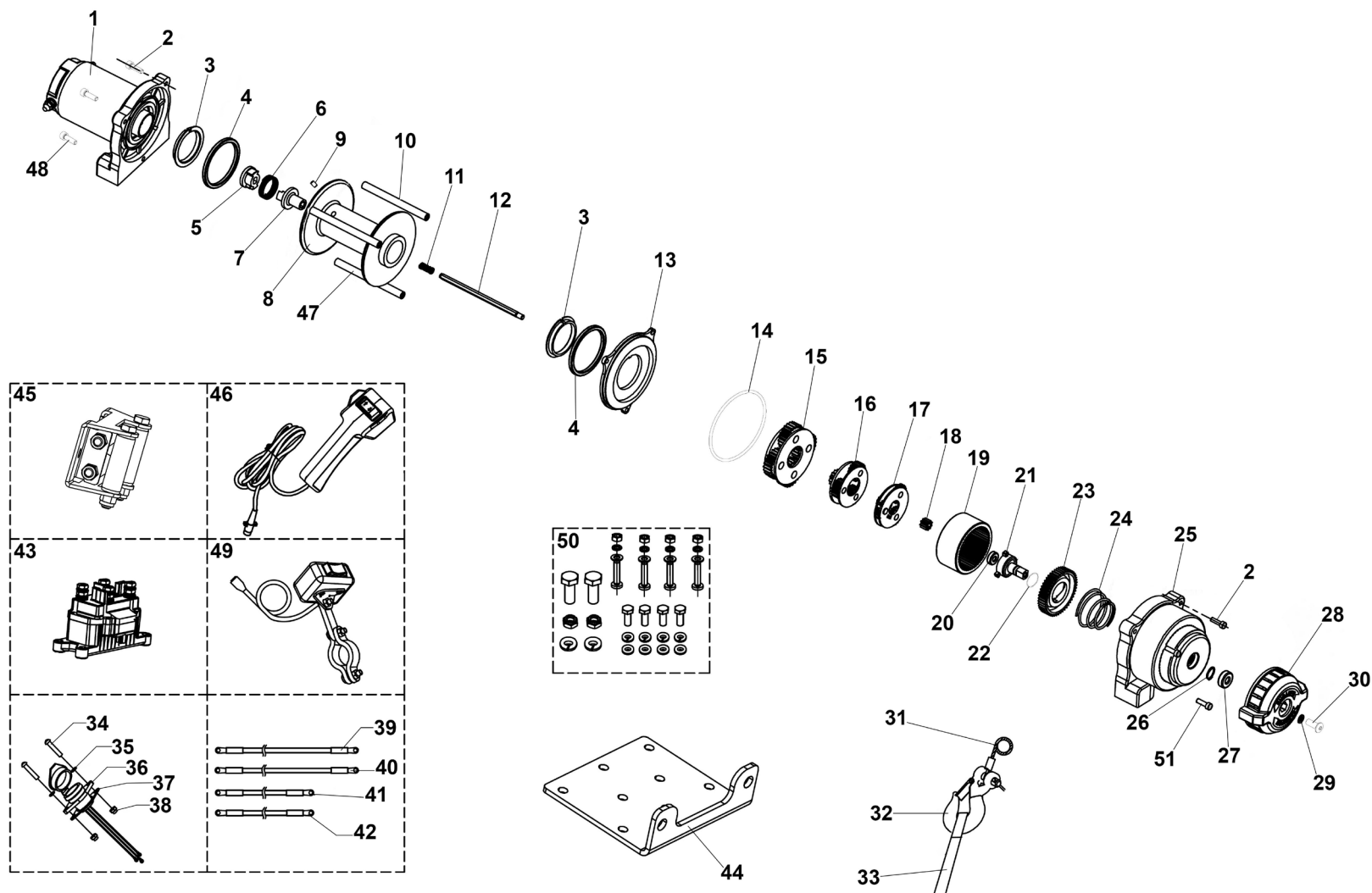




Parts Information:
ATV/Quad Recovery Winch 1135kg (2500lb) Line Pull 12V
Model No: ATV1135.V2



NOTE: It is our policy to continually improve products and as such we reserve the right to alter data, specifications and component parts without prior notice.

There may be alternative versions of this product, please contact us should you require this information.

IMPORTANT: No liability is accepted for incorrect use of product. Spare parts must be fitted by a competent person

WARRANTY: Guarantee is 12 months from purchase date, proof of which will be required for any claim.

Jack Sealey Ltd t/a Sealey Group, Kempson Way, Suffolk Business Park, Bury St Edmunds, Suffolk, IP32 7AR UK

Jack Sealey (EU) Ltd t/a Sealey Group, Farney Street, Carrickmacross, Co. Monaghan, A81 PK68 Ireland

Tel: 01284 757500 • Email: sales@sealey.co.uk • Web: www.sealey.co.uk



Parts Information:
ATV/Quad Recovery Winch 1135kg (2500lb)
Line Pull 12V
Model No: ATV1135.V2

Item	Part No.	Description
1	ATV1135.V2-01	Motor Assembly (Internal 1.05hp 800W)
2	SCB516.S	Socket Cap Bolt M5 x 16mm
3	ATV1135.V2-03	Drum Bushing
4	ATV1135.V2-04	Packing Seal
5	ATV1135.V2-05	Coupling A
6	ATV1135.V2-06	Spring, Coupling
7	ATV1135.V2-07	Coupling B
8	ATV1135.V2-08	Drum Assembly
9	ATV2040.08	Countersunk Head Screw M5 x 10mm
10	ATV2040.V2-10	Tie Bar
11	ATV1135.V2-11	Spring
12	ATV1135.V2-12	Hexagon Shaft
13	ATV1135.V2-13	Clutch Cover
14	ATV2040.V2-14	O-Ring 100 x 1.9mm
15	ATV1135.V2-15	Gear Carrier Assembly, Output
16	ATV1135.V2-16	Gear Carrier Assembly
17	ATV1135.V2-17	Gear Carrier Assembly, Input
18	ATV1135.V2-18	Sun Gear, Input
19	ATV1135.V2-19	Gear Ring B
20	B/606ZZ	Bearing 606ZZ
21	ATV1135.V2-21	Axis Support Bushing
22	ATV2040.V2-22	O-Ring 19 x 2.4mm
23	ATV1135.V2-23	Cam Clutch Gear
24	ATV1135.V2-24	Clutch Spring
25	ATV1135.V2-25	Gear Housing
26	ATV2040.V2-26	Circlip 15mm
27	ATV2040.V2-27	Bearing 6802ZZ

Item	Part No.	Description
28	ATV1135.V2-28	Free Spool Handle
29	SWM6.S	Spring Washer M6
30	SCB616.S	Socket Cap Bolt M6 x 16mm
31	ATV1135.WR	Wire Rope (Ø4.8mm x 15.2m) for ATV1135
32	WH.01	Winch Hook 1/4"
33	ATV1135.V2-33	Handsaver
34	SS525.S	Hex Head Set Screw M5 x 25mm
35	FWM5.S	Flat Washer M5
36	ATV1135.V2-36	Hand remote 3-pin Connector
37	ATV1135.V2-37	Water-Proof Cover
38	SN5.S	Steel Nut M5
39	ATV1135.V2-39	Motor Wire Set, Yellow
40	ATV1135.V2-40	Motor Wire Set, Blue
41	ATV1135.V2-41	Motor Wire Set, Red
42	ATV1135.V2-42	Motor Wire Set, Black
43	ATV1135.V2-43	Contacto
44	ATV1135.V2-44	Mounting Plate
45	ATV1135.V2-45	Roller Fairlead
46	ATV2040.V2-46	Hand Remote Assembly
47	ATV1135.V2-47	Hexagon Tie Bar
48	SCB410.S	Socket Cap Bolt M4 x 10mm
49	ATV2040.V2-49	Switch, Rocker, Black (c/w Handle Bar Bracket & Wires)
50	ATV2040.V2-50	Hardware Kit
51	SCB416.S	Socket Cap Bolt M4 x 16mm
--	ATV1135-V2-36A	Hand Remote 4-Pin Connector (Not Shown)

NOTE: It is our policy to continually improve products and as such we reserve the right to alter data, specifications and component parts without prior notice. There may be alternative versions of this product, please contact us should you require this information.

IMPORTANT: No liability is accepted for incorrect use of product. Spare parts must be fitted by a competent person

WARRANTY: Guarantee is 12 months from purchase date, proof of which will be required for any claim.

Jack Sealey Ltd t/a Sealey Group, Kempson Way, Suffolk Business Park, Bury St Edmunds, Suffolk, IP32 7AR UK
Jack Sealey (EU) Ltd t/a Sealey Group, Farney Street, Carrickmacross, Co. Monaghan, A81 PK68 Ireland
Tel: 01284 757500 • **Email:** sales@sealey.co.uk • **Web:** www.sealey.co.uk