

SEALEY

INSTRUCTIONS FOR

AIR OPERATED TROLLEY JACK 20TONNE

MODEL NO: YAJ20B.V3

Thank you for purchasing a Sealey product. Manufactured to a high standard, this product will, if used according to these instructions, and properly maintained, give you years of trouble free performance.

IMPORTANT: PLEASE READ THESE INSTRUCTIONS CAREFULLY. NOTE THE SAFE OPERATIONAL REQUIREMENTS, WARNINGS & CAUTIONS. USE THE PRODUCT CORRECTLY AND WITH CARE FOR THE PURPOSE FOR WHICH IT IS INTENDED. FAILURE TO DO SO MAY CAUSE DAMAGE AND/OR PERSONAL INJURY AND WILL INVALIDATE THE WARRANTY. KEEP THESE INSTRUCTIONS SAFE FOR FUTURE USE.



Refer to
instructions



Wear Protective
Footwear

1. SAFETY

- ✓ Disconnect jack from air supply before changing parts, servicing or performing any maintenance.
- ❑ **WARNING!** ensure correct air pressure is maintained and not exceeded.
- ✓ Keep air hose away from heat, oil and sharp edges. Check air hose for wear before each use, and ensure that all connections are secure.
- ✓ Ensure the jack is in sound condition and good working order. Take action for immediate repair or replacement of damaged parts.
- ✓ *Use genuine parts only. Unauthorised parts may be dangerous and will invalidate the warranty.*
- ✓ Use jack on level and solid ground, preferably concrete. *Avoid tarmac as jack may sink in.*
- ✓ Place wedges under wheels of vehicle.
- ✓ Ensure the vehicle handbrake is engaged, engine is switched off and transmission is in gear (or "Park" if automatic).
- ✓ Ensure minimum distance of 0.5m between vehicle and static objects such as doors, walls, etc., to allow for vehicle tilting.
- ✓ Only place jack under those lifting points recommended by vehicle manufacturer (*see vehicle handbook*).
- ✓ Check that the jacking point is stable and centred on the jack saddle and is free from grease and oil.
- ✓ Locate the jack in a suitable, well lit work area.
- ✓ Keep work area clean and tidy and free from unrelated materials.
- ✓ Use a qualified person to maintain or repair the jack's hydraulic system.
- ✗ **DO NOT** top up hydraulic system with brake fluid. Use hydraulic jack oil only.
- ✓ Ensure there are no passengers in the vehicle.
- ✓ Ensure all non-essential persons keep a safe distance whilst the jack is in use.
- ▲ **DANGER:** *Use the jack for lifting only, NOT for supporting the lifted load.*
- ✓ Use suitable capacity axle stands under the vehicle before proceeding with any task.
- ✗ **DO NOT** allow untrained persons to operate the jack.
- ✗ **DO NOT** operate the jack if parts are missing or damaged.
- ✗ **DO NOT** exceed the rated capacity of the jack.
- ✗ **DO NOT** allow the vehicle to move while supported by the jack, or use the jack to move the vehicle.
- ✗ **DO NOT** jack the vehicle if there is a risk of spillage of fuel, battery acid, or other dangerous substances.
- ✗ **DO NOT** work under the vehicle until axle stands have been correctly positioned.
- ✗ **DO NOT** use the jack for purposes other than that for which it is intended.
- ✗ **DO NOT** adjust the safety overload valve.
- ✗ **DO NOT** apply your body weight to the handle during jacking. The handle is only for moving the jack to and from the jacking location.
- ✗ **DO NOT** yank the hose from the air supply, and **DO NOT** direct air from the air hose at yourself or others.
- ✗ **DO NOT** use the jack if believed to have been subjected to abnormal load or shock. Inspect and take appropriate action.
- ✓ Ensure that there are no persons or obstructions beneath the vehicle before lowering.
- ✓ When not in use disconnect jack from the air supply, and store, fully lowered, in a safe, dry, childproof area.
- ❑ **WARNING!** *turn off air supply and de-pressurise the control nozzle before removing the pump unit from any installation or mobile system. Failure to comply with this instruction may damage the unit and will invalidate your warranty.*

2. INTRODUCTION

Powerful and reliable, ideal for workshop or roadside use. At modest cost, it takes the effort out of lifting heavy plant, tractors or commercial vehicles. Features dead man's controls and multi-position locking handle. Supplied with 20/60/90mm extensions to close the gap between the saddle of the jack and the jacking point.

3. SPECIFICATION

Model no:YAJ20B.V3
Max. capacity:20tonne
Min. height:228mm
Max. height(including extension)/capacity:
Stage 1 (mm/tonne):548/20
Stage 2 (mm/tonne):n/a
Piston stroke:120mm
Screw extension:110mm
Extensions:20/60/90mm
Chassis length:575mm
Length including handle:1270mm
Width without wheels:187mm
Overall width:322mm
Air consumption:9.5cfm
Working pressure:102-145psi
Weight:43kg

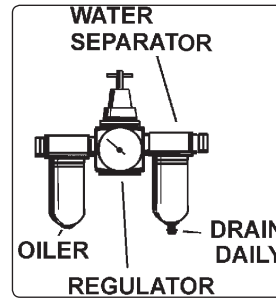


Fig.1

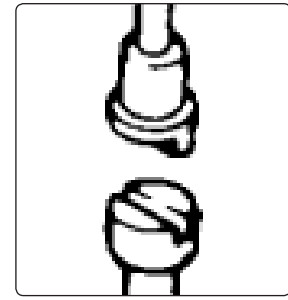


Fig.2

4. AIR SUPPLY

- 4.1. Ensure the jack pneumatic switch (or trigger) is in the "off" position before connecting to the air supply.
- 4.2. You will require an air pressure of at least 102psi (max 145psi) and an air flow of 9.5cfm to get the best performance from this jack. Use a compressor of 3HP or above.
 - ❑ **WARNING!** Ensure the air supply does not exceed 145psi while operating the jack. Too high an air pressure and unclean air will shorten the product's life owing to excessive wear, and may be dangerous causing possible damage and personal injury.
- 4.3. Keep the air hose between the compressor and the air jack as short as possible, and install an air filter and oiler, see fig.1.
- 4.4. Drain the air tank daily. Water in the air line will damage the jack.
- 4.5. Clean the air inlet filter screen weekly.
- 4.6. Line pressure should be increased to compensate for unusually long air hoses (over 8 metres). The minimum hose diameter should be 3/8" I.D. and fittings must have the same inside dimensions.
- 4.7. Keep hose away from heat, oil and sharp edges. Check hoses for wear, and make certain that all connections are secure.

5. ASSEMBLY

- ❑ **WARNING!** Ensure the jack is not connected to the air supply before performing the following:
Refer to fig.3
- 5.1. Loosen the bolt on handle yoke and insert the handle assembly (1).
 - 5.2. Rotate the release valve knob to locate the connecting rod into the release valve rod as shown in fig.2.
 - 5.3. Secure the handle assembly by tightening the bolt on the handle yoke.
 - 5.4. Hook the spring on the air hose onto the bracket on the side of the handle.

6. OPERATION

Refer to fig.3

- 6.1. **Preparation before use.**
 - 6.1.1. You will require an air pressure of at least 100psi, (max 145psi) and an air flow of 9.5cfm to operate jack.
 - 6.1.2. Connect the air supply hose.
- 6.2. **Eliminate any air in the system.**
 - 6.2.1. Before using the jack, purge the hydraulic circuit in order to eliminate any possible air that may have entered the system during transit.
 - 6.2.2. Remove the four screws and lift off the upper cover (12).
 - 6.2.3. Loosen the oil filler screw (16) half a turn.
 - 6.2.4. Close the release valve by turning the knob clockwise.
 - 6.2.5. Operate the air valve (9) and repeatedly tighten and loosen the oil filler screw (16) until the piston starts to rise.
 - 6.2.6. Fully tighten the oil filler screw (16) and ensure that the piston can rise to its highest position.
 - 6.2.7. When complete, open the release valve by turning the knob anti-clockwise and lower the piston to its lowest position.
 - 6.2.8. Refit the upper cover (12) and secure using the four screws.
- 6.3. **Using the jack.**
 - ❑ **WARNING!** Ensure you have read and understood the safety instructions in chapter 1 before commencing work.
 - 6.3.1. Lift the lock lever, position the handle as required and release the lock lever.
 - 6.3.2. Position the Jack under the vehicle manufacturer's recommended jacking point (see vehicle hand book).
 - 6.3.3. To raise the jack up, remove the air valve (9) from the handle and press the air valve lever (9).
 - 6.3.4. When the vehicle has reached the desired height release the lever (10-8) which will stop further air flow and hold the jack at the height to which it has been raised.
 - 6.3.5. Place axle stands correctly in position and ensure chapter 1 safety instructions are strictly applied before performing any task.
- 6.4. **Lowering the jack.**
 - 6.4.1. Ensure there are no persons or obstruction beneath the vehicle before lowering, and remove any axle stands.
 - 6.4.2. To lower the jack, slowly turn the release valve knob anti-clockwise and the jack will lower in a controlled manner.

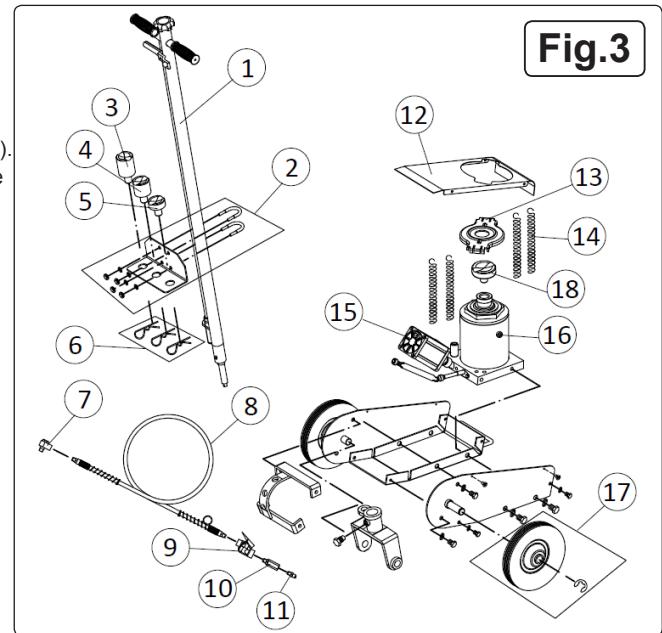


Fig.3

- 6.4.3. Once completely lowered remove the jack from under the vehicle. If you have finished using the jack, turn the air supply off, disconnect the jack from the air line and store the jack and air line accordingly.

Note: Always store the jack with the piston rod in the lowest position to prevent weakening the return springs (14).

7. MAINTENANCE

IMPORTANT: Only fully qualified personnel should attempt maintenance or repair.

- ❑ **WARNING!** Disconnect jack from air supply before changing parts, servicing or performing any maintenance.
- 7.1. When the jack is not in use, the piston rod must be in the lowest position to minimise corrosion.
- 7.2. Keep the jack clean and lubricate all moving parts on a regular basis.
- 7.3. To check oil level, fully lower Jack. Remove the oil filler screw (16). The correct oil level should be up to the entrance of the oil filler opening.
- 7.4. If oil level is low, fill as required.
NOTE: Use a good quality Jack oil, such as SEALEY HYDRAULIC JACK OIL.
- ❑ **WARNING! DO NOT** use brake fluid, or any fluid other than hydraulic jack fluid as this may cause serious damage to the Jack and will invalidate the warranty!
- ❑ **WARNING!** wear safety goggles.
- 7.5. Grit or gum deposits in the air pump may also reduce performance. Remove the filter (10) and clean it. Allow to dry before use.
- 7.6. Should the piston not rise and the oil level and operation is correct, this may indicate a problem with air seeping into the hydraulic valve passage. Purge any air from the system, see paragraph 6.2.
- 7.7. Confirm that the piston can rise to the highest position.
- 7.8. If the air system does not have an oiler, lubricate the air pump once or twice a month with a few drops of Sealey air tool oil dripped into the air inlet to prolong air pump life.
- 7.9. After a year of extensive use, the oil should be replaced in order to extend the life of your equipment. To drain the oil, remove the oil filler screw (16). Make sure that no dirt is allowed to enter the hydraulic system's oil. See 7.3. for refilling instructions.
- 7.10. Periodically check the piston rod for signs of corrosion. Clean exposed areas with a clean oiled cloth.

IMPORTANT: NO RESPONSIBILITY IS ACCEPTED FOR INCORRECT USE OF THE MACHINE.

Owing to their size and weight, hydraulic products should ideally be repaired by local service agents. we have service / repair agents in most parts of the UK. Before returning your product please call our technical helpline on **01284 757505** for advice and trouble shooting guidance.

If the jack is under guarantee please contact your stockist.

8. TROUBLESHOOTING

| PROBLEM | POSSIBLE CAUSE | REMEDY |
|--|---|---|
| Jack will not lift the load | 1. Release valve not tightly closed. | 1. Tighten release valve |
| | 2. Low oil level | 2. Check and add oil, see section 7. |
| | 3. Defective or worn internal parts. | 3. Discontinue use and contact a repair centre. |
| | 4. Load exceeds maximum allowance. | 4. Use a higher capacity jack. |
| Jack will not hold the load | 1. Release valve not tightly closed. | 1. Tighten release valve. |
| | 2. Hydraulic unit malfunction. | 2. Discontinue use and contact a repair centre. |
| Jack will not descend to minimum height, or will not remain in lowered position. | 1. Air trapped in system. | 1. Bleed system, see section 6.2. |
| | 2. Reservoir oil overfilled. | 2. Check and ensure proper oil level, see section 6.2. |
| Jack will not lift to max. height. | 1. Low oil level. | 1. Check and ensure proper oil level, see section 6.2. |
| Jack will not function after above solutions have been tried. | 1. Internal malfunction or structural damage. | 1. Discontinue use and contact an authorised repair centre. |





ENVIRONMENT PROTECTION

Recycle unwanted materials instead of disposing of them as waste. All tools, accessories and packaging should be sorted, taken to a recycling centre and disposed of in a manner which is compatible with the environment. When the product becomes completely unserviceable and requires disposal, drain any fluids (if applicable) into approved containers and dispose of the product and fluids according to local regulations.

Note: It is our policy to continually improve products and as such we reserve the right to alter data, specifications and component parts without prior notice.

Important: No Liability is accepted for incorrect use of this product.

Warranty: Guarantee is 12 months from purchase date, proof of which is required for any claim.

Sealey Group, Kempson Way, Suffolk Business Park, Bury St Edmunds, Suffolk. IP32 7AR



01284 757500



01284 703534



sales@sealey.co.uk



www.sealey.co.uk