



REFRACTOMETER ANTIFREEZE/BATTERY FLUID/ SCREENWASH/ADBLUE®

MODEL NO: VS0052.V3

Thank you for purchasing a Sealey product. Manufactured to a high standard, this product will, if used according to these instructions, and properly maintained, give you years of trouble free performance.

IMPORTANT: PLEASE READ THESE INSTRUCTIONS CAREFULLY. NOTE THE SAFE OPERATIONAL REQUIREMENTS, WARNINGS & CAUTIONS. USE THE PRODUCT CORRECTLY AND WITH CARE FOR THE PURPOSE FOR WHICH IT IS INTENDED. FAILURE TO DO SO MAY CAUSE DAMAGE AND/OR PERSONAL INJURY AND WILL INVALIDATE THE WARRANTY. KEEP THESE INSTRUCTIONS SAFE FOR FUTURE USE.



Refer to
instruction
manual



Wear eye
protection



Wear protective
gloves

1. SAFETY

- ✓ Familiarise yourself with the applications and limitations of the refractometer.
- ✓ Keep the meter clean and in good condition.
- ✗ **DO NOT** use the meter for any purpose other than that for which it is designed.
- ☐ **WARNING!** When testing fluids, especially battery fluid, ensure that none comes into contact with your eyes or skin since serious injury could result. Wear protective gloves and clothes. Ensure that all general workshop safety rules are applied when working with vehicle batteries.

2. INTRODUCTION

Accurately measures the strength of battery fluid, screenwash, antifreeze and AdBlue® by measuring the refractive index of light passing through the mixture. Suitable for synthetic antifreeze mixtures including long-life OAT (Organic Acid Technology), G13 and aqueous/urea content of AdBlue®. Temperature corrected prism ensures accuracy. Eyepiece with adjustable focus. Simple calibration check using distilled water. Supplied with pipette, sample spatula, carry sleeve and storage case with foam inserts.

3. SPECIFICATION

Model No.: VS0052.V3

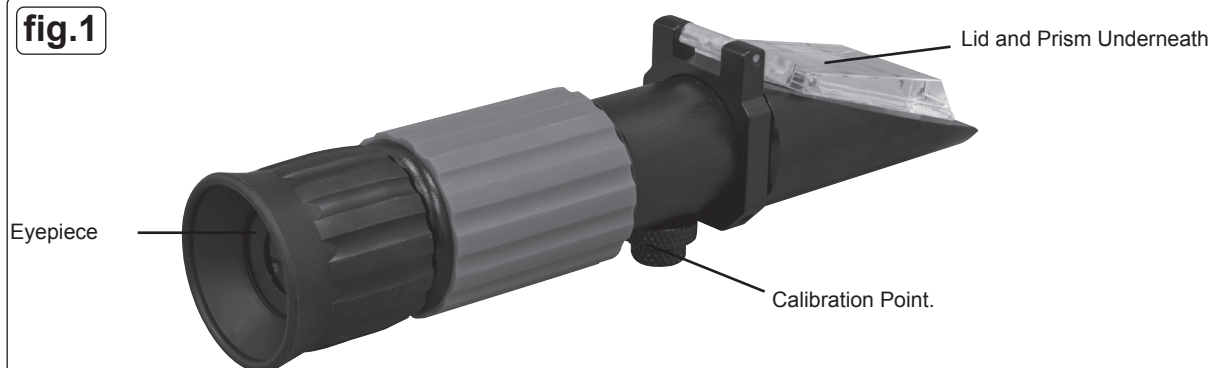
Nett Weight: 0.32 kg



4. OPERATION

- 4.1. The tester incorporates a display, subdivided into five scales see fig.2 overleaf.
- 4.2. Check that the prism and lid are clean.
- 4.3. Open lid, hold tester so that prism surface is level and with pipette, place a drop of the fluid to be tested, onto the prism.
- 4.4. Close the lid, press lightly, to disperse the fluid evenly with no bubbles.
- 4.5. Turn eyepiece so that the display is correctly focused.
- 4.6. Read off the value, on the appropriate scale, indicated by the pronounced LIGHT-DARK boundary.
- 4.7. The reading is the numerical value of the measured liquid.
- 4.8. On completion of each test carefully clean the prism with a lint-free dry cloth.

fig.1



Refer to fig.2 for the following tests

5. ANTIFREEZE TEST

- 5.1. Read the test procedure.
- 5.2. For Propylene Glycol read the left side of centre scale. For Ethylene read the right side of centre scale.

6. WINDSCREEN WASHER TEST

- 6.1. Read the test procedure.
- 6.2. Refer to WINDSCREEN WASHER FLUID scale. Note: Variations in formulation of windscreen washer fluids may result in an average value for a variety of alcohol based anti-freeze mixtures, this test is therefore a guideline only.

7. BATTERY FLUID TEST

- 7.1. Read the test procedure.
- 7.2. Refer to BATTERY FLUID Kg/L scale, which indicates the density of the battery fluid in kg per litre and the ranges for Recharge, Fair and Good.

8. UREA/ADBLUE TEST

- 8.1. Read the test procedure.
- 8.2. Refer to scale UREA 32% which indicates the percentage of urea to distilled water in Adblue: 32.5% indicates the most desirable percentage of urea in the solution.

9. CALIBRATION FIG.3

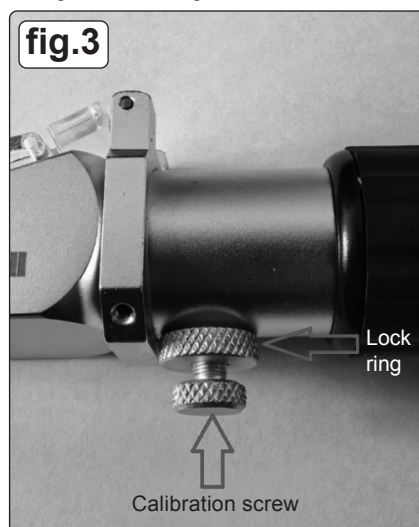
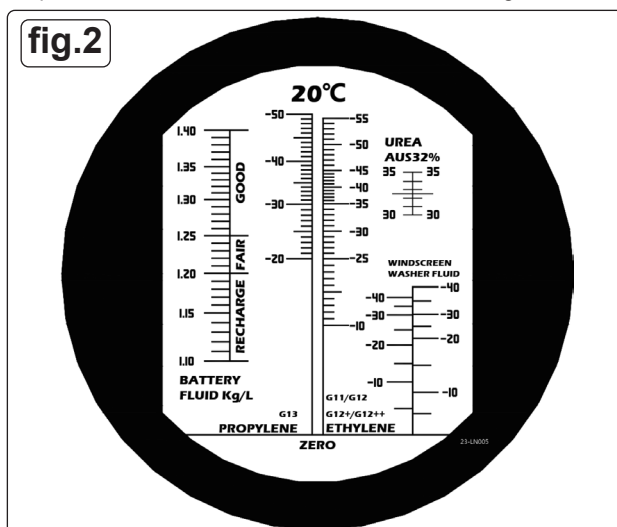
- 9.1. For best results an ambient temperature of 20°C is recommended.
- 9.2. To calibrate accuracy:
Open lid, drop one or two drops of distilled water onto prism surface. Close cover, press lightly. Loosen lock ring. Turn calibration screw to make light blue boundary coincide with the zero line on the prism, see fig.2. Tighten lock ring.

10. MAINTENANCE

- 10.1. Keep the unit clean. Protect eye lens, display lid and prism to prevent scratching.
- 10.2. After use and cleaning, store in supplied foam lined and plastic case.

11. END OF LIFE

- 11.1. Dispose of all elements in accordance with local, regional and national guidelines / regulations.



ENVIRONMENT PROTECTION

Recycle unwanted materials instead of disposing of them as waste. All tools, accessories and packaging should be sorted, taken to a recycling centre and disposed of in a manner which is compatible with the environment. When the product becomes completely unserviceable and requires disposal, drain any fluids (if applicable) into approved containers and dispose of the product and fluids according to local regulations.

Note: It is our policy to continually improve products and as such we reserve the right to alter data, specifications and component parts without prior notice. Please note that other versions of this product are available. If you require documentation for alternative versions, please email or call our technical team on technical@sealey.co.uk or 01284 757505.

Important: No Liability is accepted for incorrect use of this product.

Warranty: Guarantee is 12 months from purchase date, proof of which is required for any claim.



REGISTER YOUR
PURCHASE HERE

Jack Sealey Ltd t/a Sealey Group, Kempson Way, Suffolk Business Park, Bury St Edmunds, Suffolk, IP32 7AR UK
Jack Sealey (EU) Ltd t/a Sealey Group, Farney Street, Carrickmacross, Co. Monaghan, A81 PK68 Ireland
Tel: 01284 757500 • Email: sales@sealey.co.uk • Web: www.sealey.co.uk