



37KG CAPACITY WALK BEHIND BROADCAST SPREADER

MODEL No: **SPB37W.V2**

Thank you for purchasing a Sealey product. Manufactured to a high standard, this product will, if used according to these instructions, and properly maintained, give you years of trouble free performance.

IMPORTANT: PLEASE READ THESE INSTRUCTIONS CAREFULLY. NOTE THE SAFE OPERATIONAL REQUIREMENTS, WARNINGS & CAUTIONS. USE THE PRODUCT CORRECTLY AND WITH CARE FOR THE PURPOSE FOR WHICH IT IS INTENDED. FAILURE TO DO SO MAY CAUSE DAMAGE AND/OR PERSONAL INJURY AND WILL INVALIDATE THE WARRANTY. KEEP THESE INSTRUCTIONS SAFE FOR FUTURE USE.



Refer to
instruction
manual

1. SAFETY

- ✓ Before each use, check that there is no damage to the spreader and that all fixings are tight.
- ✓ Replace or repair damaged parts. Use only recommended parts. Unauthorised parts may be dangerous and will invalidate the warranty.
- ✓ Ensure that the operator is fully trained and competent to operate the spreader.
- ✓ Ensure that all chemical safety instructions are adhered to when handling products for use in the spreader. A full range of personal safety equipment is available from your Sealey stockist.
- ✓ Always distribute the load evenly.
- ✓ Ensure all non essential personnel keep a safe distance when the spreader is in use.
- ✓ Keep hands and feet away from moving parts.
- ✗ **DO NOT** overload the spreader - see Specification.
- ✗ **DO NOT** leave unattended, especially when loaded.
- ✗ **DO NOT** allow anybody to sit, stand, or ride on the spreader.
- ✗ **DO NOT** allow untrained personnel to use the spreader.
- ✗ **DO NOT** allow children to play in or climb onto the spreader.
- ✗ **DO NOT** use on windy days when spreading seeds or herbicides.
- ✗ **DO NOT** tow this spreader with a motorized vehicle of any sort.
- ✗ **DO NOT** use the spreader for purposes other than for which it is designed.
- ✗ **DO NOT** operate the spreader when you are tired or under the influence of alcohol, drugs or intoxicating medicines.
- ✓ When loaded, **DO NOT** operate the spreader over edges, rough surfaces etc. Where the spreader is at risk of overturning.
- ❑ **WARNING!** Failure to comply with these instructions may result in damage to spreader or other property and/or personal injury.

2. INTRODUCTION

Manufactured with a strong tubular steel frame and polypropylene dispensing hopper. Fitted with rain cover and pneumatic tyres and adjustable feed system. Includes hopper screen to ease spreader flow and filter out unwanted contaminants. Sprays in 360° motion to cover a large area. Suitable for a variety of horticultural agents including grit, seed, salt, fertilizer and weed killer.

3. SPECIFICATION

Model No:	SPB37W.V2
Capacity (Volume):	25L
Capacity (Weight):	37kg
Dimensions (W x D x H):	535 x 940 x 820mm
Nett Weight:	9.5kg
Spread:	3-3.6m

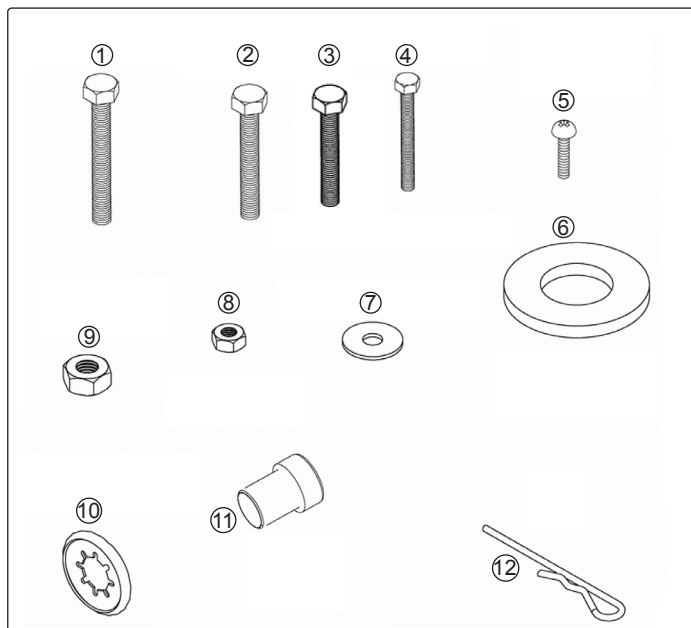
1	Gauge & Lever Ass'y
2	Handle Grip
3	Handle
4	Hopper
5	Impeller
6	Wheel, Pneumatic
7	Gear & Axle Assembly



SPB37W.V2

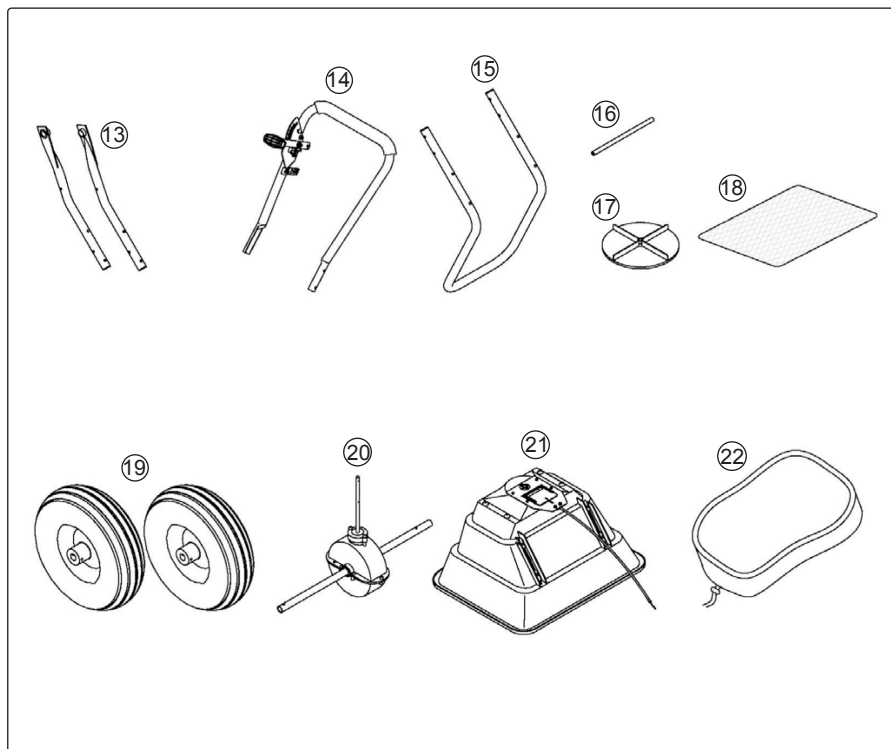
4. CONTENTS

- 4.1. Open the carton and remove any loose parts, including those found inside bags or tucked into corners. Lay all items out on a flat surface and separate them for easy visibility. Identify each part by comparing it with the parts list or manual, checking labels and quantities to ensure nothing is missing. Before beginning assembly, inspect all components for any signs of damage that may have occurred during shipping, and take a moment to familiarise yourself with the hardware and tools required so the process proceeds smoothly. Keeping parts organised will help prevent confusion and make final assembly faster and more efficient.



The numbers correspond only to the parts shown in the graphic to the left.

ITEM	DESCRIPTION	QTY
1	Hex Head Bolt M6 x 70mm	4
2	Hex Head Set Screw M6 X 40 Zinc	4
3	Hex Head Set Screw M6 X 35 Zinc	5
4	Hex Bolt (M5x45)	1
5	Machine Screw Pan Head Phillips M4x20mm	1
6	Flat Washer M16 Zinc	1
7	Repair Washer M6 X 19 Zinc	5
8	Nyloc Nut M5 Zinc	5
9	Nyloc Nut M6 Zinc	12
10	Axle end cover	2
11	Inner Axle Bushing	2
12	R--Clip	1



The numbers correspond only to the parts shown in the graphic to the left.

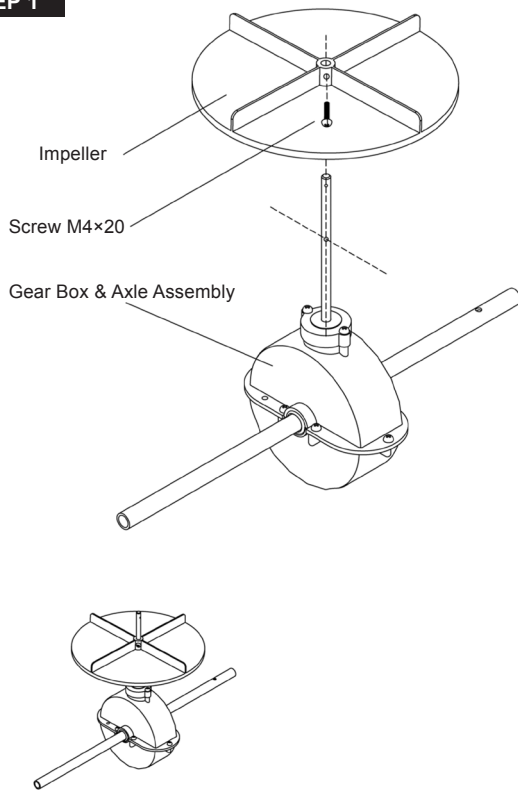
ITEM	DESCRIPTION	QTY
13	Wheel Assembly Frame L/R	2
14	Handle Assembly	1
15	Support Leg	1
16	Fixed Connection Rod	1
17	Impeller	1
18	Hopper Screen	1
19	Wheels, Pneumatic	2
20	Gear & Axle Assembly	1
21	Hopper	1
22	Rain Cover	1

Once everything has been checked and laid out, follow the assembly instructions on the next pages for complete guidance on putting the unit together. The illustrations provided will help you understand the orientation of each component and how they should fit. Study the diagrams before starting to reduce the chance of mistakes, and as you proceed, ensure each part is properly aligned and fully seated before tightening any hardware. Correct assembly is essential for safe operation and long-term durability of the product.

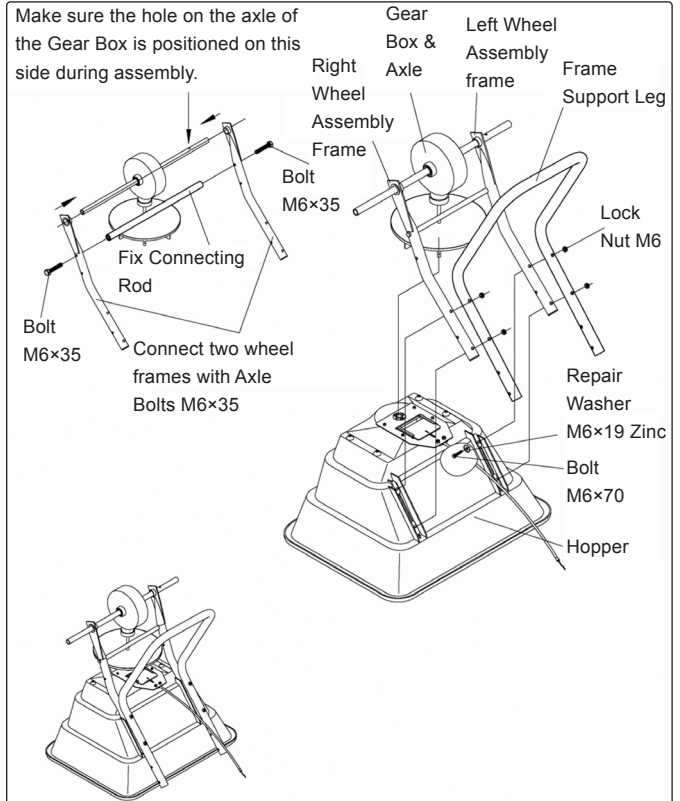
5. ASSEMBLY

- 5.1. Step 1:** To install the impeller onto the Gear Box and Axle Assembly, align the impeller's centre hole with the Gear Box axle, then insert the M4×20 screw through the impeller and continue feeding it through the hole in the axle, tightening the screw with the appropriate driver until the impeller is firmly secured without restricting its rotation.

STEP 1



Make sure the hole on the axle of the Gear Box is positioned on this side during assembly.

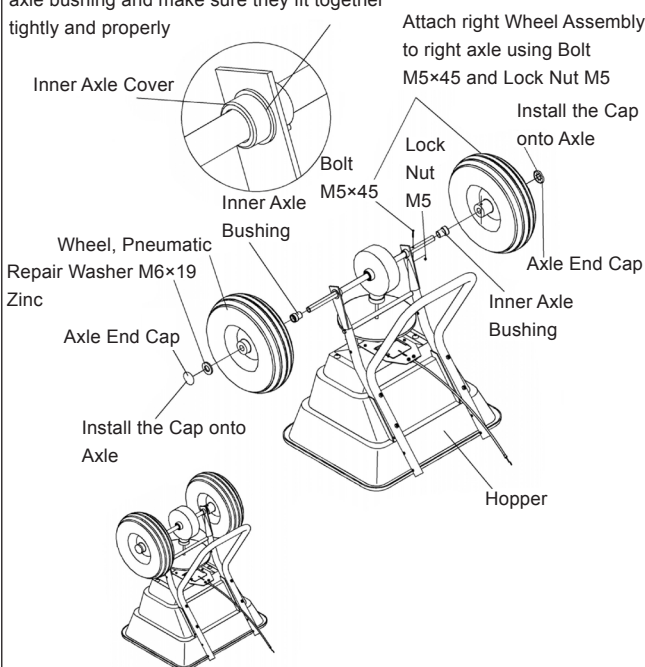


STEP 2

- 5.2. Step 2:** Attach the Wheel Assembly Frame to each side of the Gear Box axle and the Fixing Connecting Rod, then insert two M6×35 bolts through the Wheel Assembly Frame and into the Fixing Connecting Rod, ensuring the Gear Box axle hole is positioned on the right side as shown; next, mount the Wheel Assembly Frames and Support Leg onto the Hopper using M6×70 bolts, M6 lock nuts, and Repair Washer M6×19 Zinc, leaving all bolts and nuts loose for now.

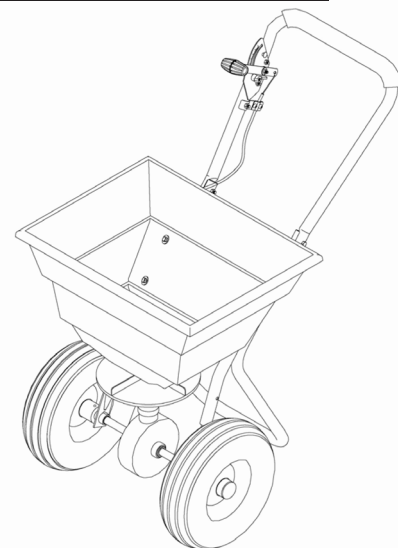
STEP 3

Insert the inner axle bushing into the outer axle bushing and make sure they fit together tightly and properly

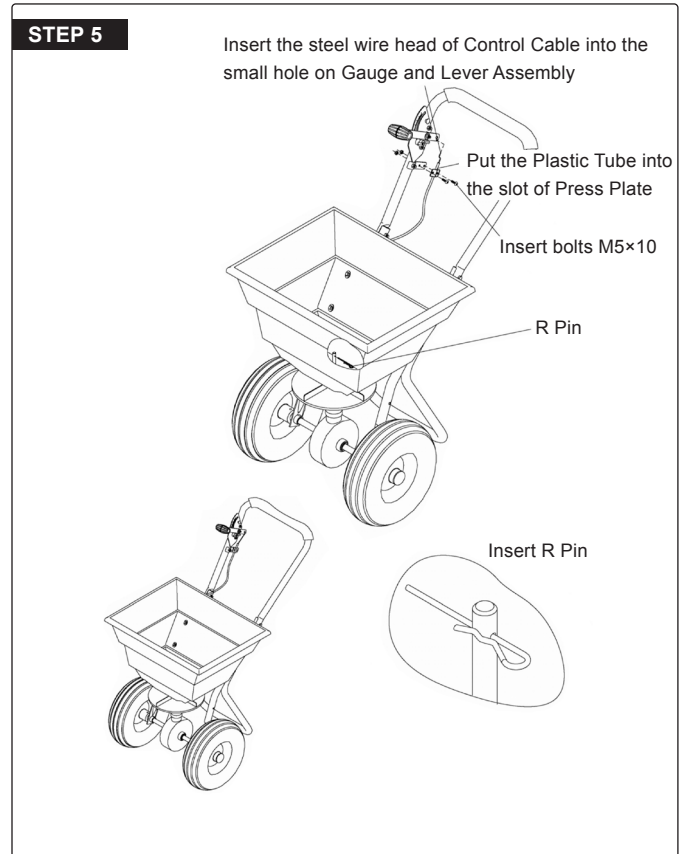
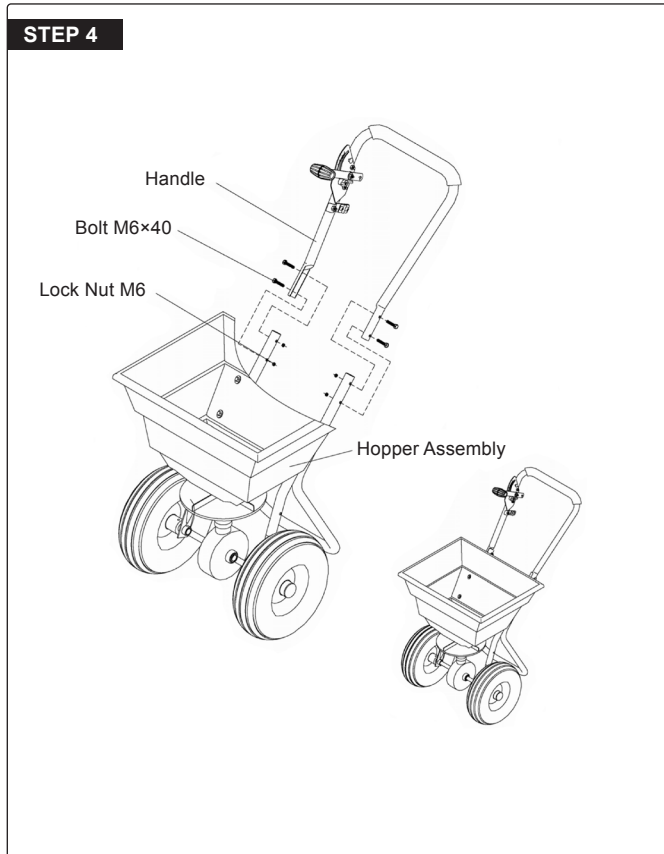


- 5.3. Step 3:** Insert the Inner Axle Bushing into the Outer Axle Bushing, ensuring they fit tightly and neatly; then mount the right Wheel Assembly onto the right axle using an M5×45 bolt and M5 lock nut and tap the Cap onto the right axle with a wooden or rubber hammer, after which you can install the left Wheel Assembly onto the left axle, place a Repair Washer M6×19 Zinc, and tap the Cap onto the left axle in the same manner.

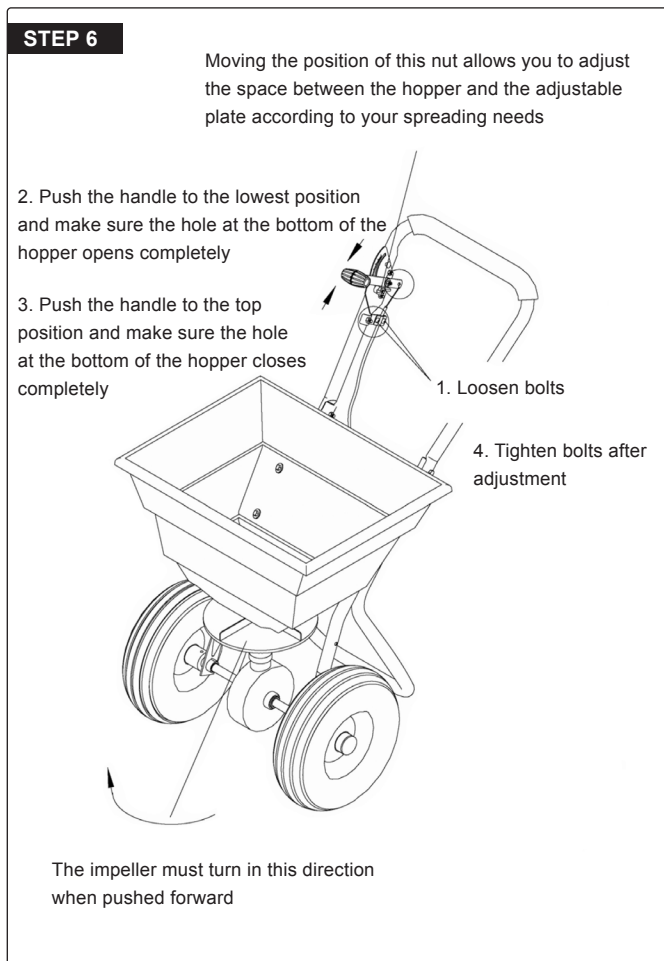
Illustration of finished Broadcast Spreader



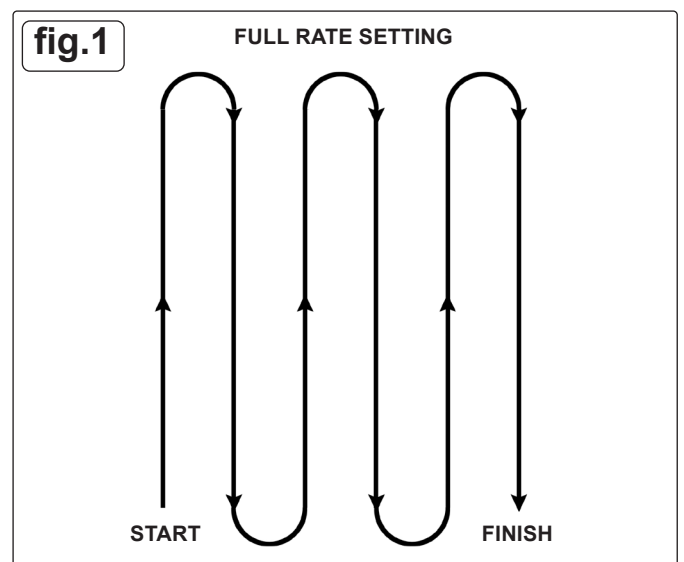
- 5.4. Step 4:** Insert the Upper Handle into the Support Leg and secure it using M6×40 bolts and M6 lock nuts, then go back and tighten all nuts and bolts from the first step onward, taking care not to over-tighten.



- 5.6. Step 5:** First, insert the steel wire head of the control cable into the small hole on the Gauge and Lever Assembly. Next, loosen the two M5×10 bolts and lock nuts on the Press Plate, then place the plastic tube into the slot of the Press Plate and retighten the M5×10 bolts and lock nuts. Finally, insert the R-pin to complete the assembly.

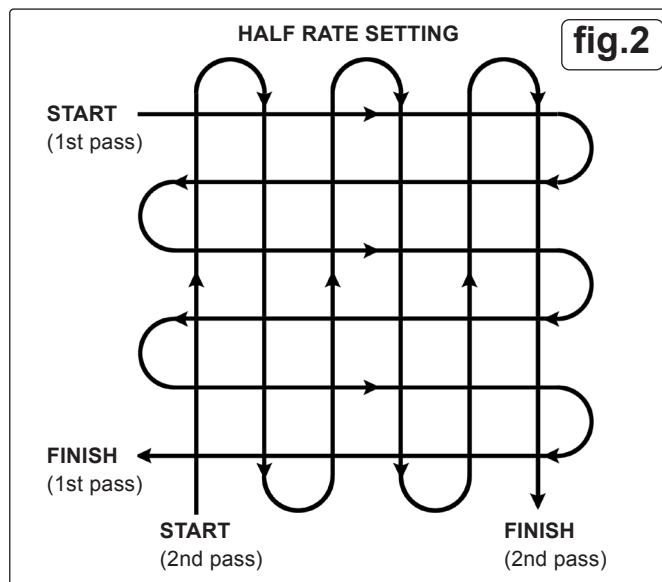


- 5.7. Step 6: Adjustments:** After completing all the previous steps, check if the holes at the bottom of the hopper can open and close completely using the handle. If they do, no further adjustments are needed. If the holes do not open and close fully, follow these steps: (1) Loosen the two M5×10 bolts on the clamp as shown. (2) Push the handle to the top position and manually adjust the adjustable plate so the hopper holes close completely. (3) Push the handle to the lowest position and adjust the adjustable plate so the hopper holes open completely. (4) Retighten the bolts and nuts on the clamp. To operate the spreader, push the handle downward to the lowest position. You can also move the wing nut on the Gauge & Lever to adjust the space between the hopper and the adjustable plate according to your spreading needs.



6. OPERATION

- 6.1. The spreader is designed to be pushed at approximately three miles per hour, which is a brisk walking pace; slower or faster speeds will affect the spread pattern, and wet fertilizer can also alter the distribution. Use the stop bolt on the gauge to ensure consistent amounts of material are distributed. Refer to Figures 1 and 2 for suggested walking patterns based on the level of coverage required. Always begin walking before opening the flow control plate, and when stopping or turning to make a new pass, close the flow control plate to stop dispensing and continue for one more stride, this reduces waste and prevents over-saturating the lawn. To maintain even coverage, ensure that each broadcast pattern slightly overlaps the previous one, and avoid letting any broadcast material come into contact with trees, shrubs, or flowers that could be damaged. After each use, clean the spreader thoroughly, paying special attention to the shut-off plate and the bottom of the hopper.



(CHART 'A') SQUARE FOOT COVERAGE PER BAG (LBS/1000SQ.FT)

WEIGHT OF BAG (LBS)	5000 SQ.FT COVERAGE	10000 SQ.FT COVERAGE	15000 SQ.FT COVERAGE
5	1.0lb	0.5lb	0.3lb
10	2.0lb	1.0lb	0.7lb
15	3.0lb	1.5lb	1.0lb
20	4.0lb	2.0lb	1.3lb
25	5.0lb	2.5lb	1.7lb
30	6.0lb	3.0lb	2.0lb
35	7.0lb	3.5lb	2.3lb
40	8.0lb	4.0lb	2.3lb
45	9.0lb	4.5lb	3.0lb
50	10.0lb	5.0lb	3.3lb
55	11.0lb	5.5lb	3.7lb

(CHART 'B') SPREADER SETTINGS/SPREADER WIDTHS

MATERIALS TO BE USED	LBS/1000 SQ.FT	G/M ²	SPREADER SETTING	SMALL PARTICLE SPREAD	MEDIUM PARTICLE SPREAD	LARGE PARTICLE SPREAD
GRIT SEED FERTILISER WEED KILLER E.T.C.	1	5	5	5-6 ft	6-9 ft	9-12 ft
	2	10	8	5-6 ft	6-9 ft	9-12 ft
	3	15	10	5-6 ft	6-9 ft	9-12 ft
	4	20	13	5-6 ft	6-9 ft	9-12 ft
	5	25	15	5-6 ft	6-9 ft	9-12 ft
	6	30	18	5-6 ft	6-9 ft	9-12 ft
	7	35	20	5-6 ft	6-9 ft	9-12 ft
	8	40	23	5-6 ft	6-9 ft	9-12 ft
	9	45	25	5-6 ft	6-9 ft	9-12 ft
	10	50	28	5-6 ft	6-9 ft	9-12 ft
	11	55	30	5-6 ft	6-9 ft	9-12 ft

6.2. CALCULATING THE AMOUNT OF MATERIAL NEEDED

(Refer to Charts 'A' & 'B')

To calculate the amount of material needed, such as lawn fertilizer, divide the coverage stated on the packaging by the weight of the fertilizer bag. For example, a 10 lb bag of fertilizer with a coverage of 10,000 sq. ft will distribute 1 lb of fertilizer per 1,000 sq. ft at full rate, or ½ lb of fertilizer per 1,000 sq. ft at half rate.

For pre-calculated rates, see Chart 'A'. For example, a 25 lb bag with a coverage of 15,000 sq. ft. requires 1.7 lb of fertilizer per 1,000 sq. ft. Use Chart 'B' to find the closest spreader setting; for instance, 1.7 lb per 1,000 sq. ft corresponds to spreader setting 8.

7. MAINTENANCE

- 7.1. After each use, clean all material from the hopper. Rinse and dry both the inside and outside of the spreader. Before operating, ensure the tyres are inflated to the correct pressure of 30psi. Periodically check that all fastenings are tight, and annually clean and lightly lubricate moving parts. Touch up any scratched or worn painted metal surfaces. To avoid damaging to the spreader, never exceed the rated load capacity of 37kg.
- ✱ **DO NOT** allow fertilizer or other chemicals to come into contact with skin, eyes, or clothing.
- ☐ **WARNING!** Avoid dispersing material near trees, shrubs, flowers, or water sources that could be harmed.
- 7.2. **STORAGE**
- 7.2.1. Before storing, make sure the spreader is clean and dry. Store it indoors or in a protected area during severe weather and throughout the winter months. Never leave material in the hopper for extended periods.
- 7.2.2. Keep away from children and pets during storage.



ENVIRONMENT PROTECTION

Recycle unwanted materials instead of disposing of them as waste. All tools, accessories and packaging should be sorted, taken to a recycling centre and disposed of in a manner which is compatible with the environment. When the product becomes completely unserviceable and requires disposal, drain any fluids (if applicable) into approved containers and dispose of the product and fluids according to local regulations.



REGISTER YOUR
PURCHASE HERE

Note: It is our policy to continually improve products and as such we reserve the right to alter data, specifications and component parts without prior notice.

Important: No Liability is accepted for incorrect use of this product.

Warranty: Guarantee is 12 months from purchase date, proof of which is required for any claim.

Jack Sealey Ltd t/a Sealey Group, Kempson Way, Suffolk Business Park, Bury St Edmunds, Suffolk, IP32 7AR UK
Jack Sealey (EU) Ltd t/a Sealey Group, Farney Street, Carrickmacross, Co. Monaghan, A81 PK68 Ireland
Tel: 01284 757500 • **Email:** sales@sealey.co.uk • **Web:** www.sealey.co.uk