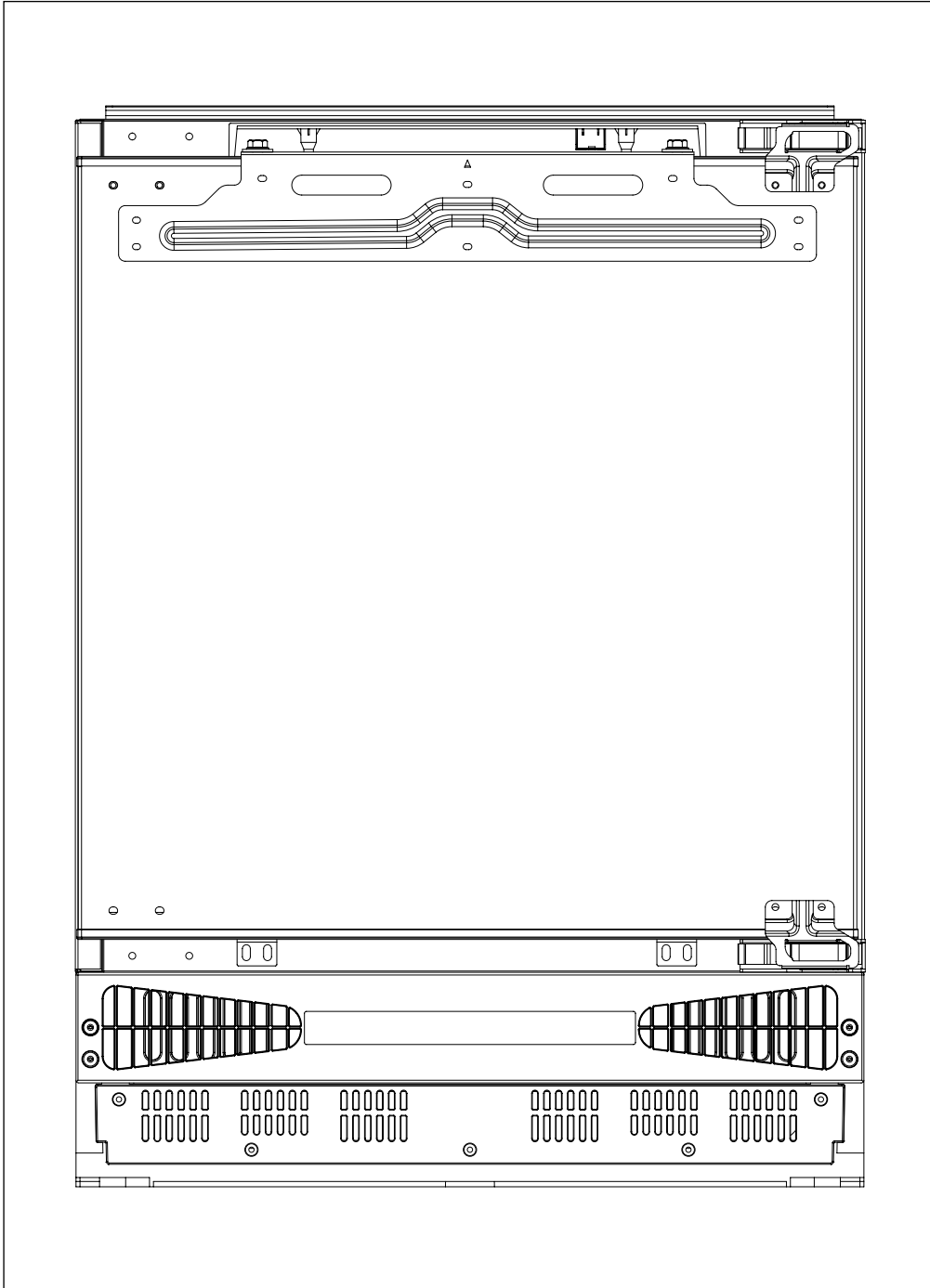


# baridi

## Integrated Undercounter Fridge with Reversible Door 135L



### Models: DH455

Thank you for purchasing a Dellonda product. Manufactured to a high standard, this product will, if used according to these instructions, and properly maintained, give you years of trouble free performance.

## Important Information

Please read these instructions carefully. Note the safe operational requirements, warnings & cautions. Use the product correctly and with care for the purpose for which it is intended. Failure to do so may cause damage and/or personal injury and will invalidate the warranty. Keep these instructions safe for future use.



Refer to instructions



Indoor use only



Warning:  
flammable material

### • ELECTRICAL SAFETY

- Check all electrical equipment and appliances to ensure that they are safe before using. Inspect power supply leads, plugs and all electrical connections for wear and damage. Baridi recommend that an RCD (Residual Current Device) is used with all electrical products.
- **WARNING!** When positioning the appliance, ensure the supply cord is not trapped or damaged.
- Electrical safety information: It is important that the following information is read and understood.
- Ensure that the insulation on all cables and on the appliance is safe before connecting it to the power supply.
- Regularly inspect power supply cables and plugs for wear or damage and check all connections to ensure that they are secure.
- **Important:** Ensure that the voltage rating on the appliance suits the power supply to be used and that the plug is fitted with the correct fuse - see fuse rating in these instructions.
- **DO NOT** pull or carry the appliance by the power cable.
- **DO NOT** pull the plug from the socket by the cable.
- **DO NOT** use worn or damaged cables, plugs or connectors.
- Ensure that any faulty item is repaired or replaced immediately by a qualified electrician.
- If the cable or plug is damaged during use, switch off the electricity supply and remove from use. Supply cord must be replaced by the manufacturer, its service agent or similarly qualified persons in order to avoid a hazard.
- Ensure that repairs are carried out by a qualified electrician.
- **DO NOT** designed to be used with an inverter.
- **DO NOT** use with an extension cord.
- **DO NOT** turn on the fridge for 4 hours. After the fridge is in place, it should be left for 24 hours. This allows time for the coolant to settle. If the supply cord is damaged, it must be replaced by the manufacturer, its service agent or similarly qualified persons in order to avoid a hazard.

### • FIRE HAZARD WARNING

- The "Risk of Fire" symbol warns that improper use or certain conditions, like blocking vents, using flammable materials, or overloading circuits, may cause a fire hazard.

### • GENERAL SAFETY

- Children from age 8 years and above, persons with reduced physical, sensory, or mental capabilities those with lack of experience and knowledge can use the appliance, if they have been given supervision or instruction concerning use of the appliance in a safe way to understand the hazards involved.
- Children aged from 3 to 8 years are allowed to load and unload refrigeration appliances.
- Children shall **NOT** play with the appliance.
- Cleaning and user maintenance on the appliance shall not be made by children without supervision.
- The appliance shall be disconnected from its power source during service and when replacing parts and, if that the removal of the plug is foreseen, it shall be clearly indicated that the removal of the plug has to be such that an operator can check from any of the points to which he has access that the plug remains removed.
- This refrigerant appliance is intended to be used at ambient temperatures ranging from 16°C to 38°C.
- **DO NOT** store explosive substances such as aerosol cans with a flammable propellant in this appliance.
- This appliance is intended to be used in household and similar applications such as:
  - – Staff kitchen areas in shops, offices and other working environments
  - – Farm houses and by clients in hotels, motels and other residential type environments
  - – Bed and breakfast type environments
  - – Catering and similar non-retail applications.
- To avoid contamination of food, please respect the following instructions:
  - – Opening the door for long periods can cause a significant increase of the temperature in the compartments of the appliance.
  - – Regularly clean surfaces that can come in contact with food and accessible drainage systems.
  - – Store raw meat and fish in suitable containers in the refrigerator, so that it is not in contact with or drip onto other food.
  - – Two-star frozen-food compartments are suitable for storing pre-frozen food, storing or making ice-cream and making ice cubes.
  - – One-, two- and three star compartments are not suitable for the freezing of fresh food.
  - – If the refrigerating appliance is left empty for long periods, switch off, defrost, clean, dry, and leave the door open to prevent mould developing within the appliance.
- **WARNING!** Keep ventilation openings, in the appliance enclosure or in the built-in structure, clear of obstruction.
- This Refrigerator **NOT** suitable for freezing foodstuffs.
- The appliance shall not be exposed to rain.
- **DO NOT** locate multiple portable socket-outlets or portable power supplies at the rear of the appliance.
- **DO NOT** use mechanical devices or other means to accelerate the defrosting process, other than those recommended by the manufacturer.
- **DO NOT** damage the refrigerant circuit.
- **DO NOT** use electrical appliances inside the food storage compartments of the appliance, unless they are of the type recommended by the manufacturer.
- To prevent risk of electromagnetic interference or other accidents, **DO NOT** place a microwave oven on top of the refrigerator or use any electric appliance inside the refrigerator.

- Never put liquids in the refrigerator uncovered.
- Never put hot foods in the refrigerator. Warm food should be allowed to cool to room temperature before being put into the refrigerator.
- Nothing should rest against the rear wall of the refrigerator as this is a wet wall appliance which during normal usage will form droplets of ice on the rear wall and cause items to freeze to the back wall.
- Make sure food is clean and any extra water is wiped away before putting into the fridge.
- Wrap or cover food before putting into the fridge. This will help prevent the loss of moisture, keep food fresh and avoid unpleasant odours.
- Sort foods prior to storing. Any foods to be used soon should be stored at the front of the shelf to prevent deterioration caused by the door being open for prolonged periods.
- **DO NOT** overfill the fridge. There should be sufficient space between the foods to allow the cool air to circulate.
- Thawing frozen foods in the fridge compartment will help to keep the temperature low and save energy.

#### • LOCK & CHILD SAFETY INSTRUCTIONS

- The refrigerator does not have a lock, take extra care to ensure children cannot access it unsupervised. When disposing of an old refrigerator, remove or disable the door to prevent the risk of entrapment.
- This is a critical safety precaution to ensure children cannot become trapped inside the unit.
- **IMPORTANT:** These steps are essential to prevent serious injury or suffocation risks. Always follow safety guidelines when installing, using, or discarding your appliance.

#### • REFRIGERANT & ENVIRONMENTAL SAFETY INFORMATION

- Environmentally friendly design
- This appliance uses R600a refrigerant (freon-free) and cyclopentane as the foaming insulation material.
- Both substances are environmentally friendly:
- **DO NOT** damage the ozone layer.
- Have a very low impact on global warming.
- R600a Refrigerant – Flammability Warning
- R600a is a flammable refrigerant, but it is safely sealed within the refrigeration system during normal operation.
- No leakage will occur under normal conditions.
- In Case of Refrigerant Leakage
- If the refrigerant circuit becomes damaged and you suspect a gas leak:
- Immediately ventilate the room by opening windows and doors.
- Keep the appliance away from open flames, sparks, or heat sources.
- **DO NOT** operate any electrical switches or devices near the appliance.
- Contact a qualified technician for inspection and repair.
- **IMPORTANT:** Never attempt to repair a damaged refrigerant system yourself. Always consult trained service personnel.

#### Climate Range

The climate class of the appliance is indicated on the rating plate. It specifies the ambient temperature range in which the appliance is designed to operate optimally.

Climate class	Allowable ambient temperature
SN Extended Temperate	This refrigeration appliance is intended for use at an ambient temperature ranging between 10°C and 32°C
N Temperate	This refrigeration appliance is intended for use at an ambient temperature ranging between 16°C and 32°C
ST Sub Tropical	This refrigeration appliance is intended for use at an ambient temperature ranging between 18°C and 38°C
T Tropical	This refrigeration appliance is intended for use at an ambient temperature ranging between 18°C and 43°C

#### Important Notes:

- **Climate Class Considerations:**
- The ambient temperature range for which the appliance is designed is indicated by its climate class. However, factors such as the location of the appliance, the ambient room temperature, and the frequency of door openings can affect the internal temperature.
- Therefore, adjustments to the temperature control settings may be necessary to maintain optimal performance under varying conditions.
- **Operating Environment Warning**
- When the appliance is operated outside the specified climate class (i.e., beyond the rated ambient temperature range), it may not be able to maintain the desired internal compartment temperatures. This can affect the appliance's overall performance and efficiency.

#### • SPECIFICATION

Model NO:	DH455
Capacity:	135L
Climate Class:	SN / N / ST / T
Colour of Product:	White
Door Style:	Reversible

<b>Model NO:</b>	<b>DH455</b>
Energy Rating:	E
Foaming Gas:	Cyclopentane
Frequency:	50Hz
Internal Dimensions (W x D x H):	524 x 460 x 523mm
Nett Weight:	28kg
Noise Power/Pressure:	35dB
Number of Shelves:	3
Plug Type:	3-Pin BS
Power Cable Length:	1.8m
Product Dimensions (W x D x H):	596 x 550 x 820/880mm
Rated current:	0.8A
Refrigerant:	R600a (25g)
Temperature Range:	2 to 8°C
Type:	Integrated
Voltage:	230V
Volume:	135L
Rated Input Power:	185W

## • FEATURES

1	Refrigerator Top Shelf (cooked food)
2	Refrigerator Middle Shelf (yoghurt and cheese)
3	Refrigerator Bottom Shelf (fresh meat and fish)
4	Salad Crisper ( fruit and vegetables)
5	Jar and Bottle Retainer (butter and eggs)
6	Bottle Retainer (drinks, e.g milk)

Due to the circulation of cold air inside the refrigerator, temperatures may vary between different compartments. Foods should therefore be stored in suitable compartments according to their type.

The shelves in the refrigerator compartment can be adjusted according to storage needs. To remove a shelf, lift the front edge slightly and pull it outward. To reinstall the shelf, slide it back into the slot and lower the front edge into position.

When storing root vegetables with leaves, such as carrots or turnips, remove the leaves before storage. This helps prevent the leaves from absorbing moisture and nutrients from the vegetables.

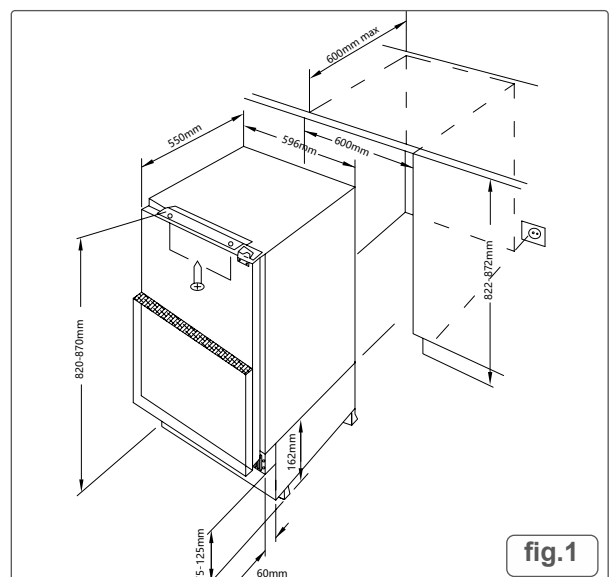
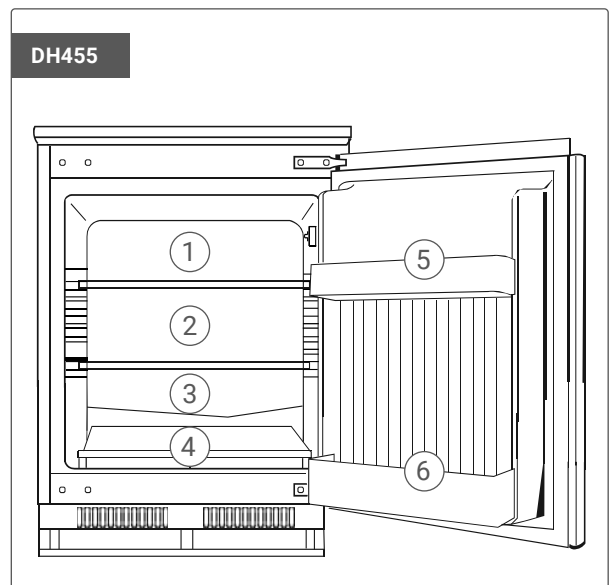
## • INSTALLATION

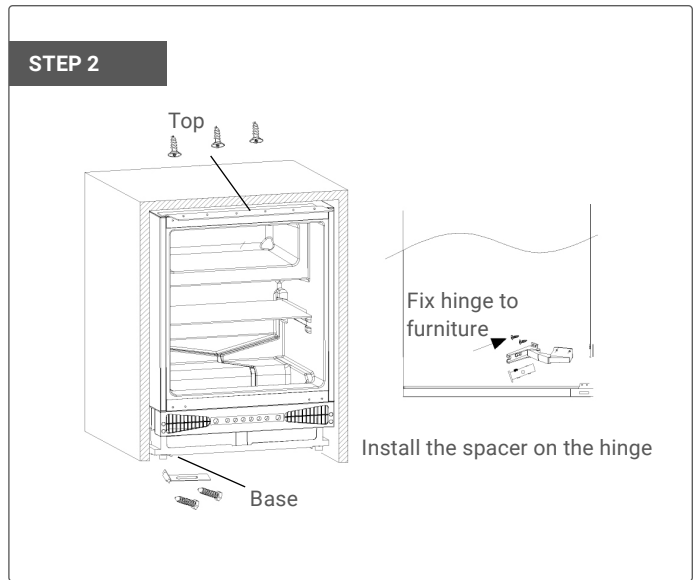
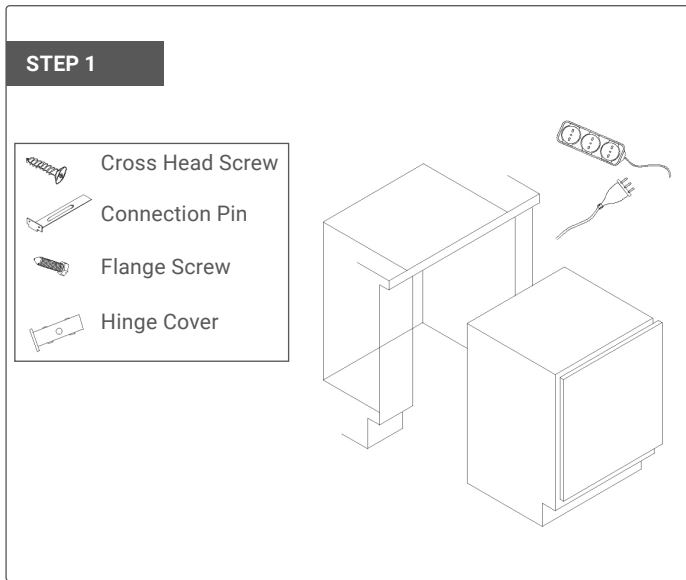
- **WARNING!** This appliance must never be installed close to heat sources, e.g. heating elements, cookers or in damp places.
- To ensure the appliance is level, adjust the height-adjustable feet at the front and rear of the appliance.
- **DO NOT** block the ventilation openings at the bottom of the appliance.

**NOTE:** See the dimensions in the illustration of the appliance (fig.1). All dimensions are in millimetres. Incorrect installation may result in increased energy consumption, premature appliance failure, and may void the appliance warranty.

## • MOUNTING THE FASCIA DOOR

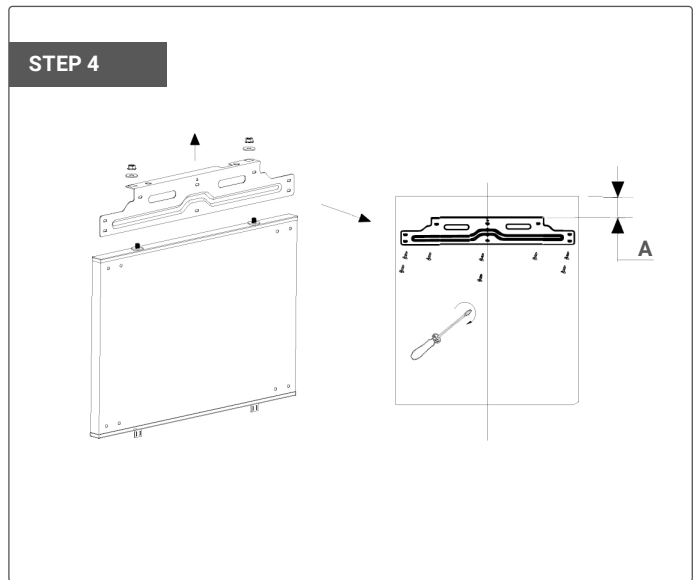
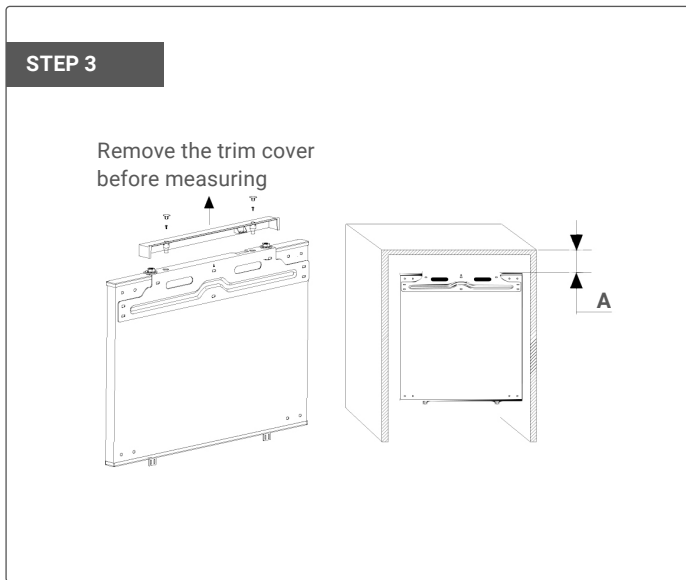
(see the step by step instructions on the next page).





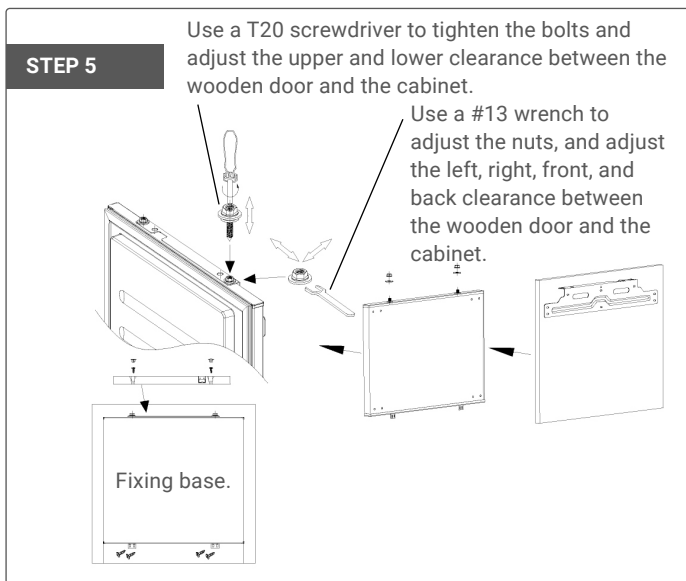
**Step 1.** Push the appliance into the cabinet. The appliance should be positioned closer to the left side of the furniture.

**Step 2.** Adjust the position of the appliance, then secure the top and bottom of the product to the cabinet using the supplied hardware.



**Step 3.** Measure the dimensions of "A".

**Step 4.** Remove the connecting metal plate and install it onto the wooden door.



**Step 5.** Follow this step to connect the wooden door to the refrigerator door.

### • DOOR REVERSAL INSTRUCTIONS (fig.2)

We recommend seeking assistance from another person to support the door while performing this operation.

1. Open the door.
2. Carefully remove the white cover caps from the side to which you wish to move the hinges.
3. Loosen the screws securing the hinges to the refrigerator cabinet, then remove the door.
4. Remove the screws securing the hinges to the door.
5. Place the door in a safe location where it will not be damaged.
6. Relocate the hinge to the opposite corner.
7. Refit the door onto the hinges. **DO NOT** turn the door upside down.
8. Insert the cover caps into the exposed holes on the opposite side.
9. Ensure that the door seal is properly fitted.

### • BEFORE FIRST USE

- You must allow the fridge to stand for at least 4 hours before switching on the power.
- Before first use, it is recommended to clean the interior of the appliance using a solution of warm water and bicarbonate of soda, then thoroughly dry the interior.
- The refrigerator may have a slight odour at first use. This is normal and will disappear as the appliance cools.
- When switching the appliance on for the first time, set the temperature control to setting 3 and allow the fridge to run for 24 hours before adjusting it to your preferred setting. For settings see controls section.

**NOTE:** that the appliance will run continuously until it reaches the correct temperature.

- If the appliance is switched off, wait at least five minutes before switching it on again to avoid damaging the compressor.
- This refrigerator cools food by cooling the inner rear wall of the cavity. It is normal for frost to form on this surface, which will later dissipate and drain through a small outlet at the bottom, where it evaporates harmlessly. Frost on the rear wall is not a fault.
- This refrigeration appliance is intended for built-in use only.

### • CONTROLS (fig.3)

#### • Temperature control

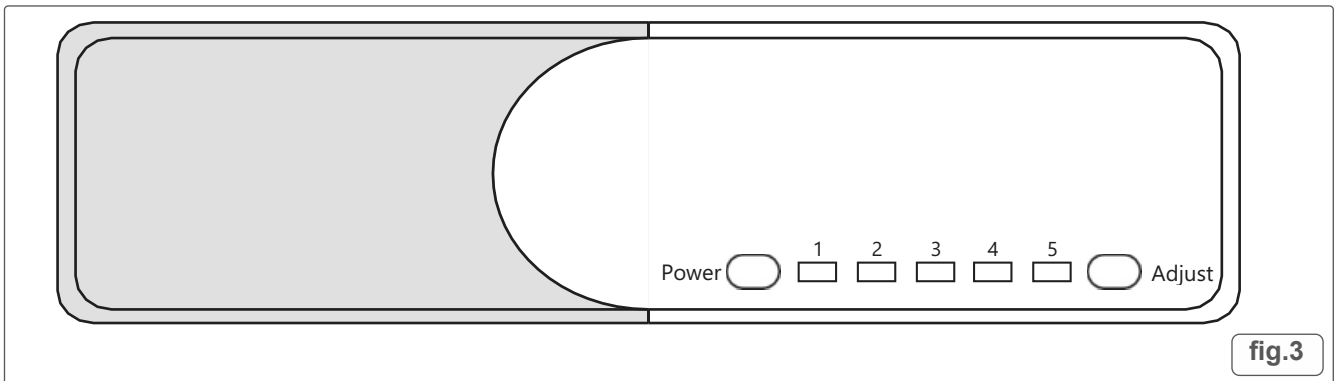
The temperature controls for this refrigerator are simple and easy to use. To adjust the temperature, press the adjust button on the right-hand side of the unit to cycle through settings 1 to 5. Setting 1 is the warmest, and setting 5 is the coldest.

After changing the temperature setting, the time required to reach the new temperature will depend on how large the change is from the previous setting.

#### • Switching on and off

When the refrigerator is connected to the power supply, the indicator lights below the setting numbers will illuminate, showing the current operating setting.

To switch the appliance on or off, press and hold the power button on the left-hand side of the unit for approximately 5 seconds.



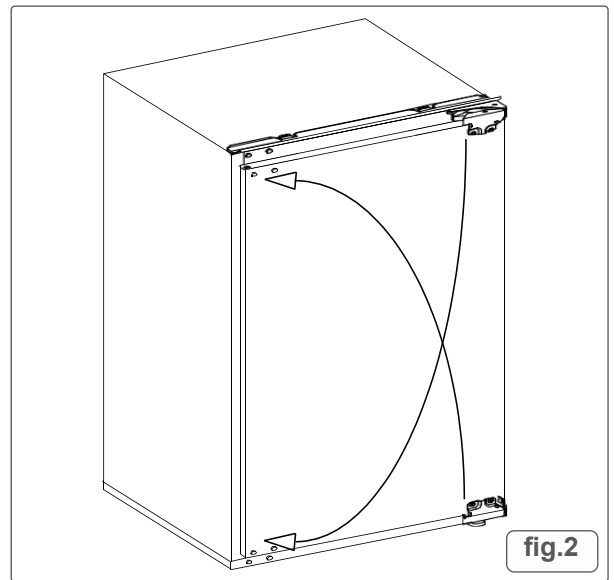
### • PRACTICAL TIPS

Due to the natural circulation of air inside the appliance, different temperature zones are created within the refrigerator compartment. The coldest area is located directly above the vegetable drawers. This area is recommended for delicate and highly perishable foods such as fish, meat, poultry, sausage products, ready meals, dishes or baked goods containing eggs or cream, fresh dough, cake mixtures, and pre-packed vegetables or other fresh foods labelled for storage at approximately 4°C.

The warmest area is located in the upper section of the door. This area is suitable for storing butter and cheese.

To achieve the most effective food preservation for the longest possible time and to reduce food waste, position products as shown in the Features section. This figure also illustrates the layout of drawers, baskets, and shelves to ensure the most efficient use of energy.

Maintaining the optimal temperature and proper storage conditions will help extend food shelf life and optimise electricity consumption. The recommended storage temperature range should be stated on the food packaging.



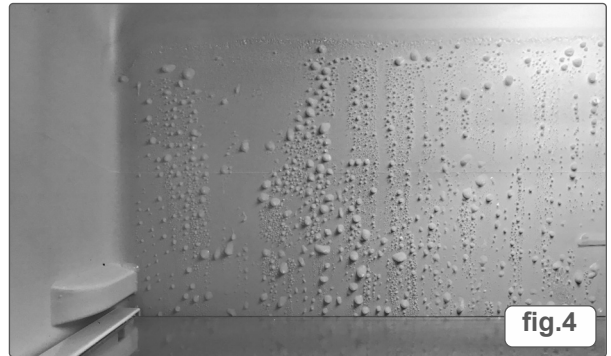
## • MAINTENANCE

### If there is water in the lower part of the refrigerator compartment:

- Check that the drain hole in the channel at the back of the refrigerator is clear. If it is blocked, refer to the Care and Cleaning section below.
- Make sure that no food or other items are touching the back wall of the refrigerator. Items may freeze to the back wall, and during the automatic defrost cycle, water may run onto the shelves and into the lower part of the refrigerator compartment.

### If ice has formed on the back wall of the fridge:

- It is normal for some ice droplets to form on the back wall of the fridge, as this is a wet-wall refrigerator (fig.4). This does not indicate a fault with the appliance.
- Check that there is some resistance when opening the door of the appliance. If the door opens too easily, it may indicate that the door seal needs to be replaced or that the appliance is not correctly installed.
- Check the door seal for any kinks, debris, or damage. If you notice any issues and are unable to resolve them yourself, contact Customer Care so that the seal can be replaced.



## • DEFROSTING THE FRIDGE

The fridge is self-defrosting. Any water produced during the defrosting process will drain out of the appliance through the channel at the back of the fridge.

It is important to keep this channel clear at all times using the cleaning tool provided.

The defrosted water is collected in the evaporating tray at the rear of the appliance, where it is safely dissipated through evaporation.

If you notice a heavy build-up of ice, refer to the care and cleaning section.

## • CHANGING THE LIGHT BULB

If the LED lighting fails, it must only be replaced by an authorised service agent. In the event of a light failure in your fridge, please contact Baridi Customer Care

## • CARE AND CLEANING

- **WARNING!** Always disconnect the appliance from the power supply before any cleaning or maintenance.
- The fridge and crisper sections should be cleaned using a solution of bicarbonate of soda and lukewarm water. **DO NOT** use abrasive products or detergents. After cleaning, rinse thoroughly and dry completely.

Shelves, drawers, and balconies should be removed and cleaned separately by hand using a mild solution of washing-up liquid and water. Do not place these items in the dishwasher.

The water drain hole at the back of the fridge compartment, as well as the evaporating tray, should be cleaned regularly to prevent defrosted water from collecting inside the appliance. The cleaning rod supplied (fig.5) can be used to clear the drain hole. Always ensure that the drainage channel at the rear of the appliance is kept free from debris.

If the drain hole or channel becomes iced over, use warm (**not boiling**) water to gently remove the blockage.

If the appliance is not to be used for a long period, unplug and clean it thoroughly. Leave the doors slightly open to prevent the formation of mildew and unpleasant odours.

## • TROUBLESHOOTING

If you experience any problems with your appliance, please check the troubleshooting guide before calling Baridi Customer Care. Contact details can be found on the back cover of this manual.

### If the appliance is not working, check the following:

- There is power to the appliance.
- The house fuses are intact and the fuse in the plug has not blown.
- The on/off switch is not set to **OFF**.
- The plug socket is functioning correctly. To check this, plug another electrical appliance into the socket to confirm it is working properly.

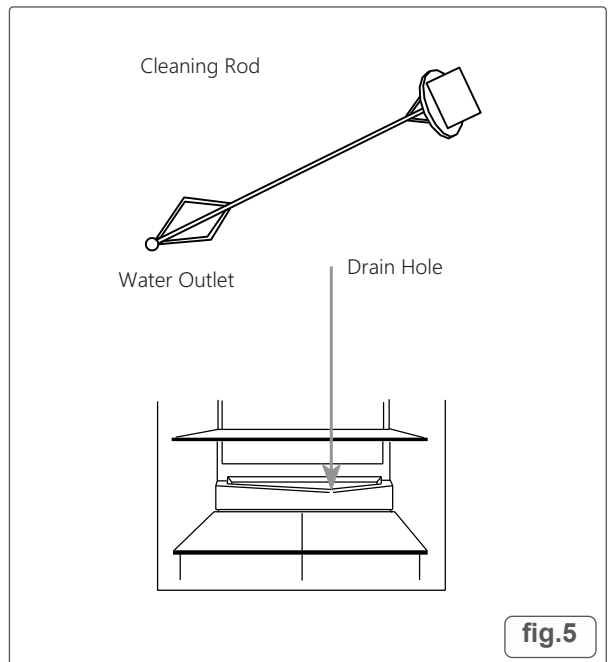
### If the appliance is working but not performing well, check the following:

- The appliance is not overloaded.
- The thermostat is set to an appropriate temperature.
- The doors are closing properly.
- The cooling system at the rear of the appliance is clean, free of dust, and not touching the rear wall.
- There is sufficient ventilation at the sides, rear, and underneath the appliance.
- The lower vents are not blocked or dirty.

### If the appliance is noisy, check the following:

- The appliance is level and stable.
- The side and rear walls are clear, and nothing is resting on the appliance.

**NOTE:** The cooling gas in the refrigerator may produce a slight bubbling or gurgling noise, even when the compressor is not running.



- **DISPOSAL AND END OF LIFE**

When the appliance reaches the end of its service life, it should be disposed of in a responsible and environmentally friendly manner.

- **DO NOT** dispose of this appliance with household waste. Instead, take it to an authorised waste collection or recycling facility where it can be properly processed.
- Before disposal, ensure the appliance is made unusable by removing the door and cutting off the power cable. This will help prevent any risk of entrapment.
- This product is marked in accordance with local regulations for waste electrical and electronic equipment (**WEEE**), which require separate collection and recycling of electrical appliances.

**Environment Protection and Waste Protection and Electrical Equipment Regulations (WEEE)**

Recycle unwanted packaging materials. When this product is no longer required, or has reached the end of its useful life, please dispose of it in an environmentally friendly way. Drain any fluids (if applicable) into approved containers, in accordance with local waste regulations. It is our policy to continually improve products and we reserve the right to alter data, specifications and parts without prior notice. No liability is accepted for incorrect use of this product. Guarantee is 12 months from purchase date, proof of which is required for any claim.



**Jack Sealey Ltd t/a Baridi**, Kempson Way, Suffolk Business Park, Bury St Edmunds, Suffolk, IP32 7AR UK  
**Jack Sealey (EU) Ltd t/a Baridi**, Farney Street, Carrickmacross, Co. Monaghan, A81 PK68 Ireland  
Tel: 01284 757575 • Email: support@baridi.co.uk • Web: www.baridi.co.uk