

baridi

Slimline Concealed Cistern, Metal Frame, Front Flush, Multi-Inlet, Adjustable Feet, WRAS Approved



Model No: DH404

Thank you for purchasing a Dellonda product. Manufactured to a high standard, this product will, if used according to these instructions, and properly maintained, give you years of trouble free performance.

Important Information

Please read these instructions carefully. Note the safe operational requirements, warnings & cautions. Use the product correctly and with care for the purpose for which it is intended. Failure to do so may cause damage and/or personal injury and will invalidate the warranty. Keep these instructions safe for future use.



Refer to
instruction
manual

SPECIFICATION

MODEL NO:	DH404
Flush Capacity:	3/6 Litres
Flush Control Position:	Front
Flush Control Type:	Flush Plate
Flush Type:	Dual

Mounting Type:	Wall Hung Pan
Nett Weight:	12.3kg
Product Depth (Front to Back):	40mm
Product Dimensions (W x D x H):	500 x 40 x 1140 mm
Product Height (Floor to Top):	1140 mm
Product Width (Side to Side):	40mm
Water Inlet Position:	Left/Back
Water Inlet Type:	1/2" BSP

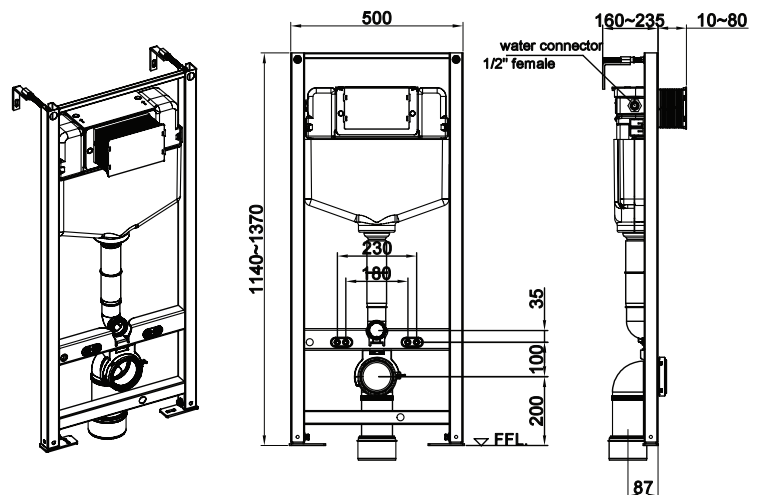
CONTENTS

Wall mounted metal frame	1
Adjustable foot	2
Protective case with lid	1
Panel fastener	1
Bracket for lever	1
Wall attaching bracket	2
Flush pipe	1
Supply bend plug	1
Flush bend plug	1
Flush bend pipe assembly	1
M12x180mm threaded rod kit	2
M10x120mm Hx Hd bolt	2
M10 full nut & washer	2
Floor attaching screw kit	2
Wall attaching screw kit	2
Instruction manual	1

TOOLS REQUIRED (Not included)

Adjustable spanner	Screwdriver (flat-head & Cross-head)
Spirit level	Tape measure
Pipe cutter (if needed)	Drill and bits

DH404 DIMENSIONS



IMPORTANT SAFETY INFORMATION

- ✓ **Check for damage:** Inspect the product immediately for visible damage. **DO NOT** install a damaged product. Report any issues to the stockist.
- ✓ Ensure water supply is turned off before installation.
- ✓ **Lift with care:** The product may be heavy or awkward to carry. Use two people and proper lifting technique to avoid strain or injury.
- ✓ This product must be installed and maintained by a qualified plumber in accordance with local plumbing regulations and standards.
- ✗ **DO NOT** modify the toilet or cistern components. Unauthorised modifications may cause leaks, failure, or void the warranty.
- ✗ **DO NOT** over tighten fixing bolts or plastic connections, as this may cause breakage.
- ✓ Inspect all components before installation. **DO NOT** install if any part is cracked, damaged, or missing.
- ✓ Always use the supplied seals, washers, and fixings. Substituting components may lead to leaks.
- ✓ Confirm that the water supply pressure complies with the product specifications. Excessive pressure may damage internal fittings.
- ✓ Check for leaks before closing wall panels.

GENERAL HANDLING

- ✓ Wear PPE: Use safety gloves and steel-toe footwear when handling the product or tools.
- ✓ Avoid impact.
- ✓ Keep packaging away from children: Plastic bags and packaging materials are suffocation hazards.

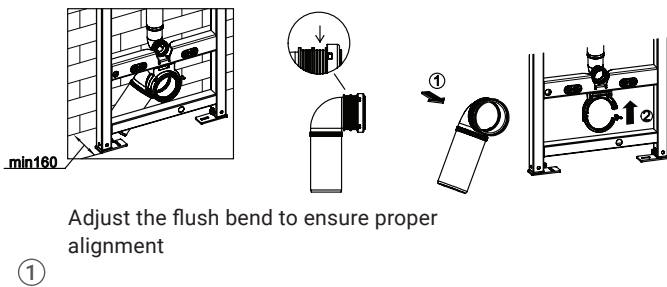
INSTALLATION

Please read these installation instructions carefully and familiarise yourself with all components of the concealed cistern before beginning. Upon receipt, inspect the cistern and all supplied parts immediately and thoroughly for any signs of transit damage or manufacturing defects. Do not proceed with installation if any issues are identified; contact your supplier for assistance. The cistern is supplied with protective packaging—carefully remove all packaging and check the unit, including the EPS anti-condensation shell, flush valve, fill valve, pipework, and connections, for any damage. Ensure that all required components, fittings, and accessories are present before starting installation, including inlet fittings, flush pipe, seals, mounting hardware, and flush control components.

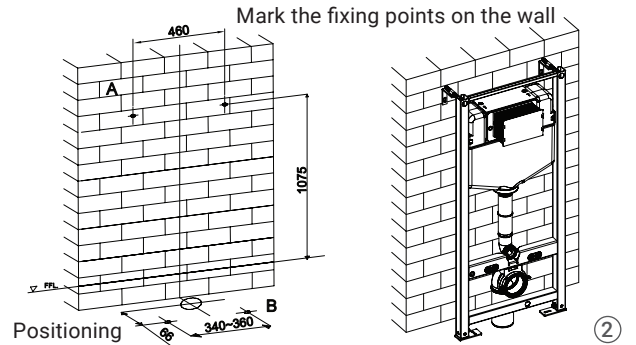
IMPORTANT: Isolate the water supply before commencing any installation work.

IMPORTANT: Where practicable and safe to do so, leak testing should be carried out progressively throughout the installation process.

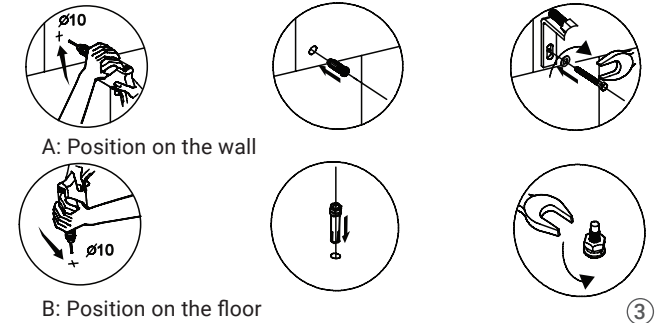
Installation of the flush pipe



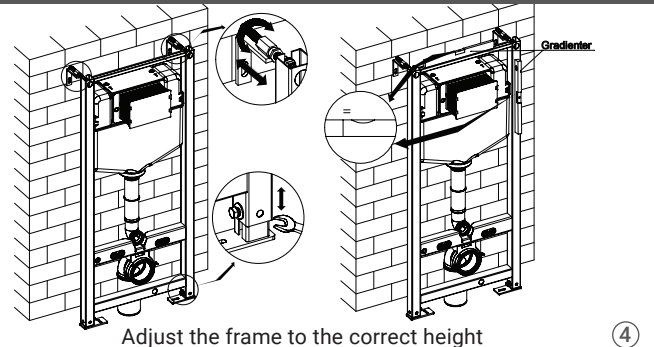
Installation of the frame



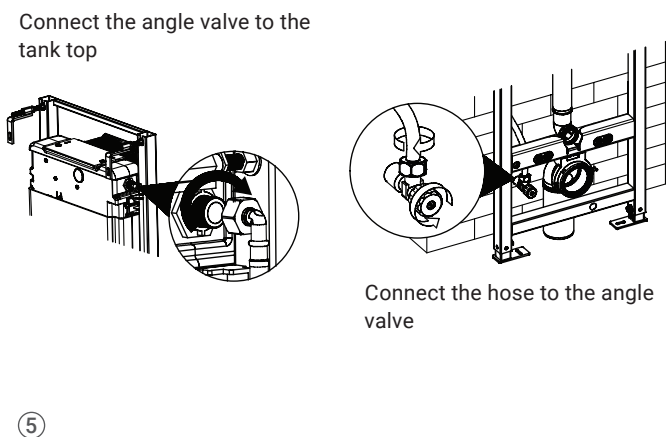
Drill holes in the wall and floor and install brackets



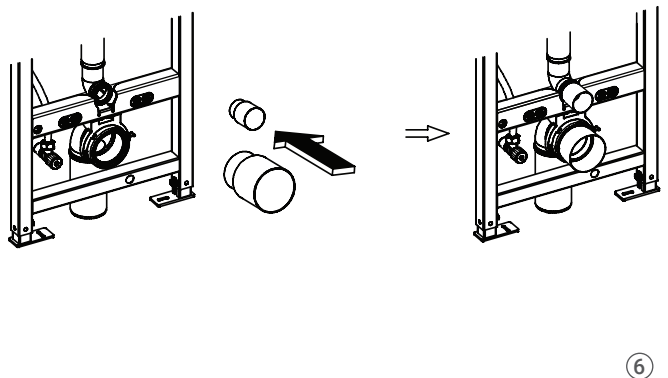
Install the frame to the wall



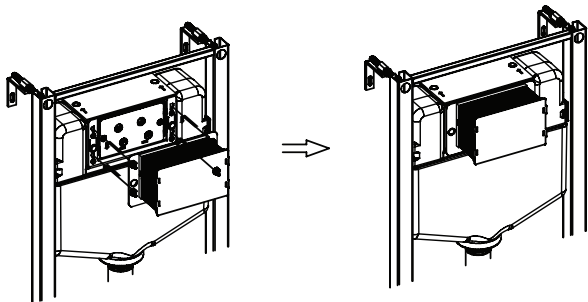
Connecting the valves



Install the bungs into the connection pipe

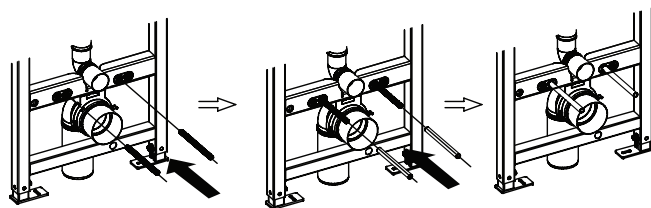


Install the protective case to the cistern



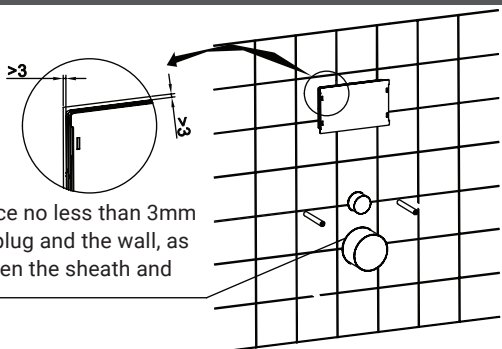
7

Install the threaded rod kits



8

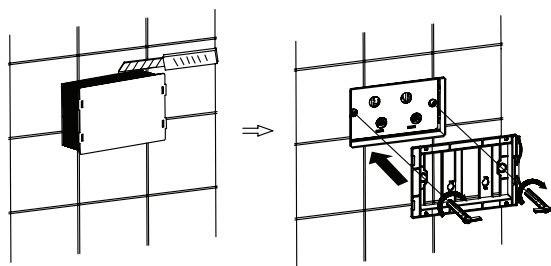
Build the partition wall



Keep the space no less than 3mm between the plug and the wall, as well as between the sheath and the wall

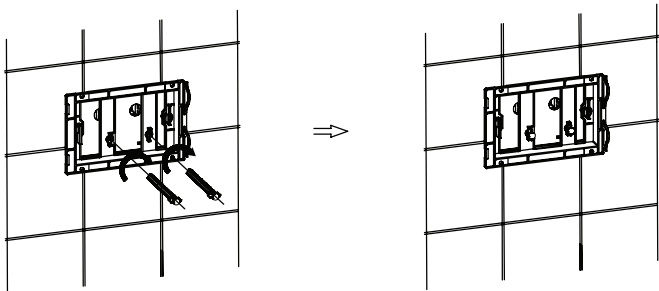
9

Installation of control plate base and connecting levers for the Flush Button



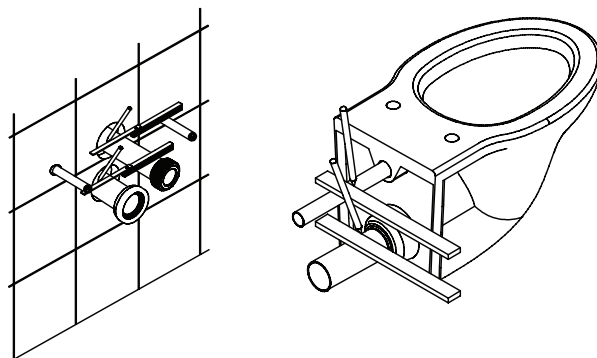
10

Insert mounting levers, turn clockwise to secure



11

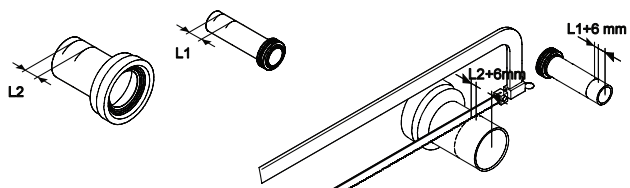
Preparation of the wall-hung toilet



Mark the positions on the flush pipe and pan waste pipe using a pencil

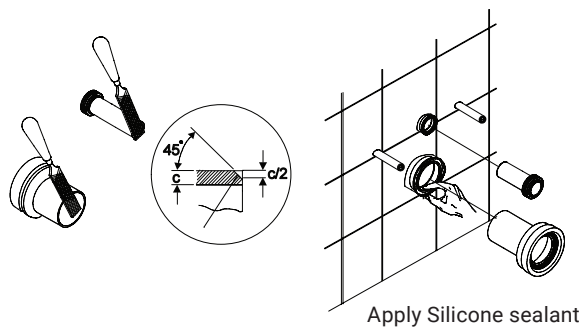
12

Measure and cut the flush pipe and waste outlet



13

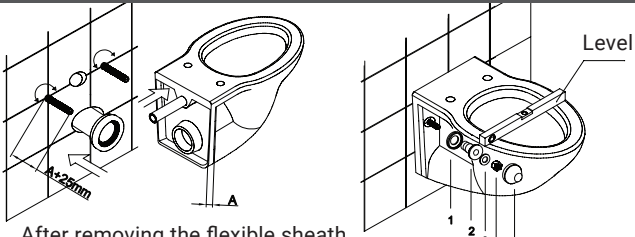
Add a chamfer to the end of the flush and waste pipes



Apply Silicone sealant

14

Fixing the toilet back to the wall

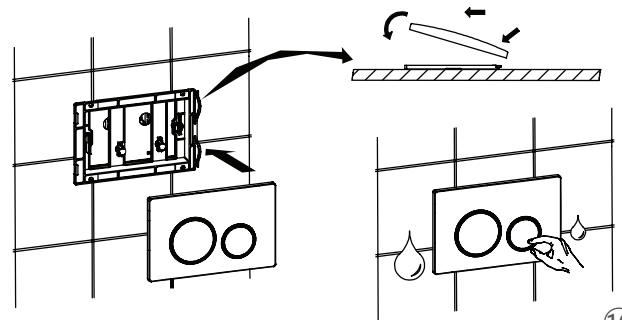


After removing the flexible sheath, adjust the exposed threaded rod, then secure the supply pipe to the toilet and the flush pipe to the wall

Secure the threaded rod kits and adjust the toilet to the correct position

15

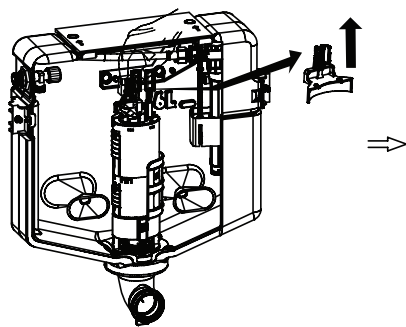
Install control plate



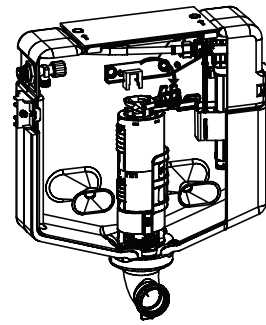
16

MAINTENANCE

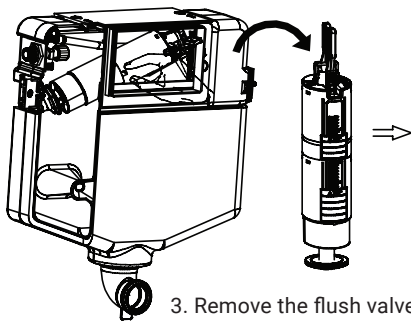
Adjustment and removing the cistern fittings



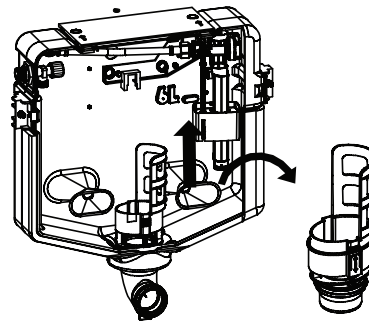
1. Remove the pressure lever from the flush valve



2. Turn the large flush lever and the small flush lever



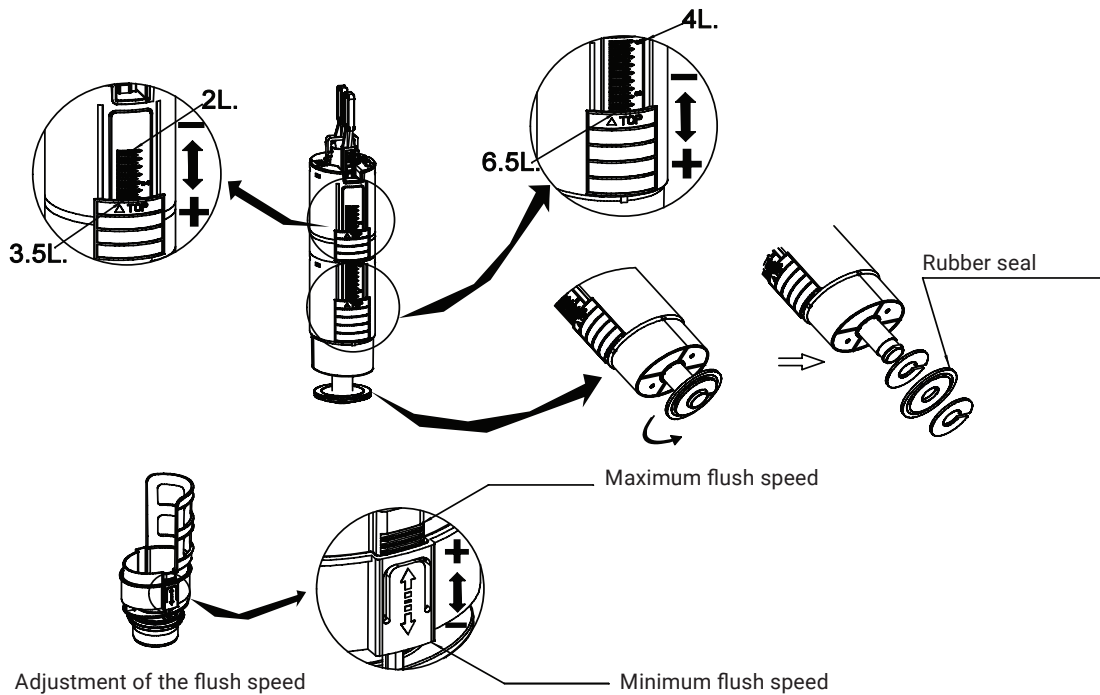
3. Remove the flush valve at an appropriate angle



4. Remove the flush valve base

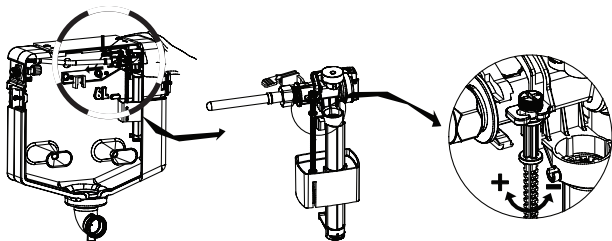
1

Flush valve water level adjustment



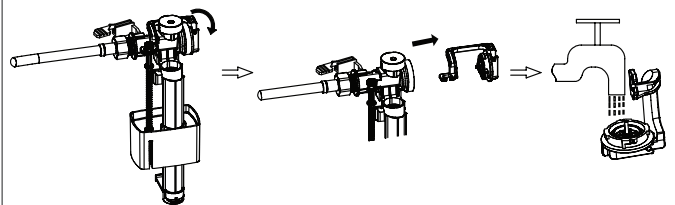
②

Adjusting the water level



③

Removing the fill valve



The fill valve can be removed and cleaned if the water fills slowly or does not stop

④

Environment Protection and Waste Protection

Recycle unwanted packaging materials. When this product is no longer required, or has reached the end of its useful life, please dispose of it in an environmentally friendly way. Drain any fluids (if applicable) into approved containers, in accordance with local waste regulations. It is our policy to continually improve products and we reserve the right to alter data, specifications and parts without prior notice. No liability is accepted for incorrect use of this product. Guarantee is 12 months from purchase date, proof of which is required for any claim.

Jack Sealey Ltd t/a Baridi, Kempson Way, Suffolk Business Park, Bury St Edmunds, Suffolk, IP32 7AR UK
Jack Sealey (EU) Ltd t/a Baridi, Farney Street, Carrickmacross, Co. Monaghan, A81 PK68 Ireland
Tel: 01284 757575 • Email: support@baridi.co.uk • Web: www.baridi.co.uk