

# baridi

---

**Slimline Low Level Concealed Cistern, Metal Frame, Dual Operation, Multi-Inlet, Adjustable Feet, WRAS Approved**



**Model No: DH403**

Thank you for purchasing a Dellonda product. Manufactured to a high standard, this product will, if used according to these instructions, and properly maintained, give you years of trouble free performance.

## Important Information

Please read these instructions carefully. Note the safe operational requirements, warnings & cautions. Use the product correctly and with care for the purpose for which it is intended. Failure to do so may cause damage and/or personal injury and will invalidate the warranty. Keep these instructions safe for future use.



Refer to  
instruction  
manual

## SPECIFICATION

MODEL NO:	<b>DH403</b>
Flush Capacity:	3/6 Litres
Flush Control Position:	Front or Top
Flush Control Type:	Flush Plate
Flush Type:	Dual

## CONTENTS

Wall mounted metal frame	1
Adjustable foot	2
Protective case with lid	1
Panel fastener	1
Bracket for lever	1
Wall attaching bracket	2
Flush pipe	1
Supply bend plug	1
Flush bend plug	1
Flush bend pipe assembly	1
M12x180mm threaded rod kit	2
M10x120mm Hx Hd bolt	2
M10 full nut & washer	2
Floor attaching screw kit	2
Wall attaching screw kit	2
Instruction manual	1

## TOOLS REQUIRED (Not included)

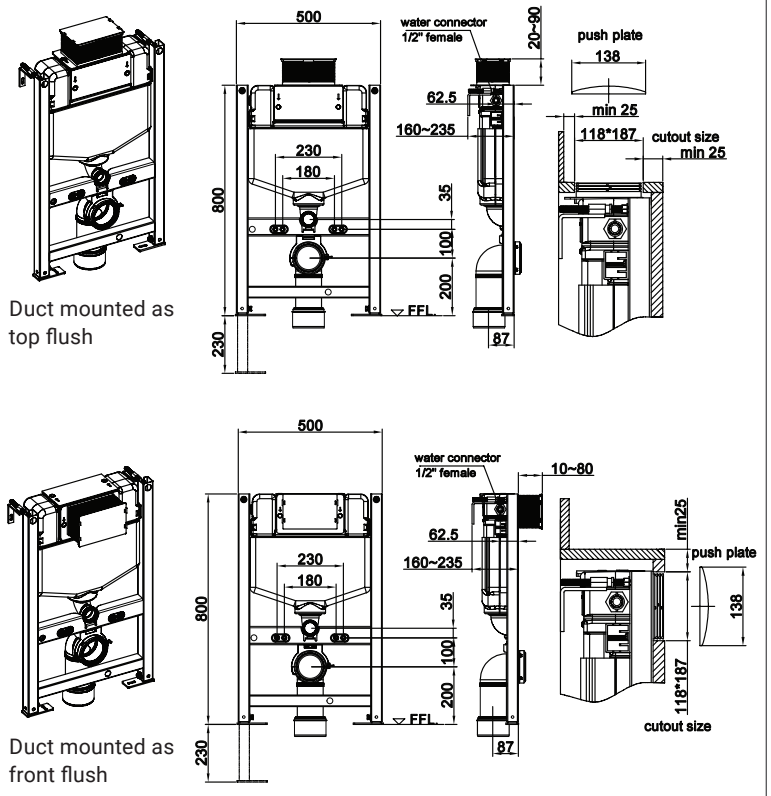
Adjustable spanner	Screwdriver (flat-head & Phillips)
Spirit level	Tape measure
Pipe cutter (if needed)	Drill and bits

## IMPORTANT SAFETY INFORMATION

- ✓ **Check for damage:** Inspect the product immediately for visible damage. **DO NOT** install a damaged product. Report any issues to the stockist.
- ✓ Ensure water supply is turned off before installation.
- ✓ **Lift with care:** The product may be heavy or awkward to carry. Use two people and proper lifting technique to avoid strain or injury.
- ✓ This product must be installed and maintained by a qualified plumber in accordance with local plumbing regulations and standards.
- ✗ **DO NOT** modify the toilet or cistern components. Unauthorised modifications may cause leaks, failure, or void the warranty.
- ✗ **DO NOT** over tighten fixing bolts or plastic connections, as this may cause breakage.
- ✓ Inspect all components before installation. **DO NOT** install if any part is cracked, damaged, or missing.
- ✓ Always use the supplied seals, washers, and fixings. Substituting components may lead to leaks.
- ✓ Confirm that the water supply pressure complies with the product specifications. Excessive pressure may damage internal fittings.
- ✓ Check for leaks before closing wall panels.

Mounting Type:	Wall Hung Pan
Nett Weight:	10.88kg
Product Depth (Front to Back):	40mm
Product Dimensions (W x D x H):	500 x 40 x 820mm
Product Height (Floor to Top):	820mm
Product Width (Side to Side):	500mm
Water Inlet Position:	Left/Back
Water Inlet Type:	1/2" BSP

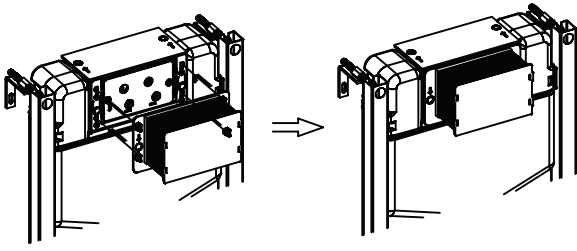
## DH403 DIMENSIONS





### Install the protective case to the cistern (front)

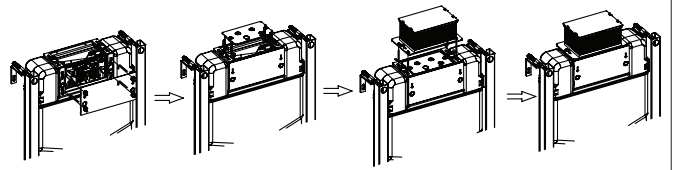
1. Duct mounted as front flush



7

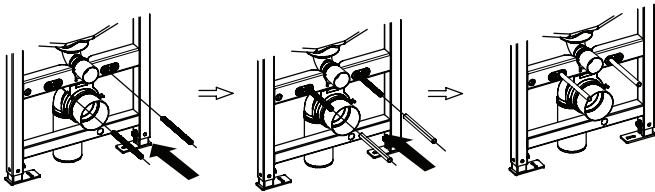
### Install the protective case to the cistern (top)

2. Duct mounted as top flush



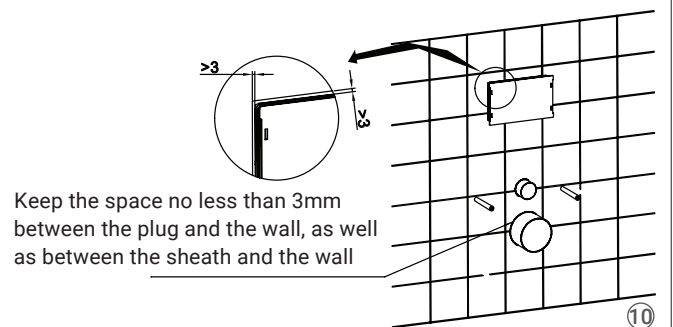
8

### Install the threaded rod kits and flexible sheath



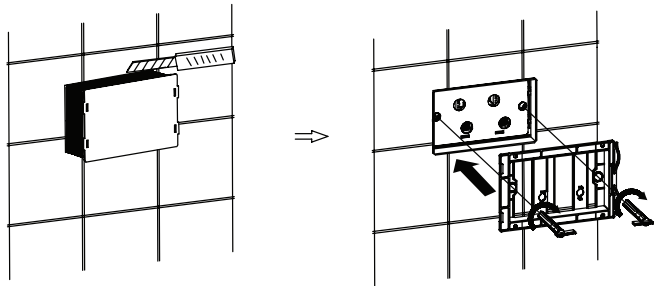
9

### Build the partition wall



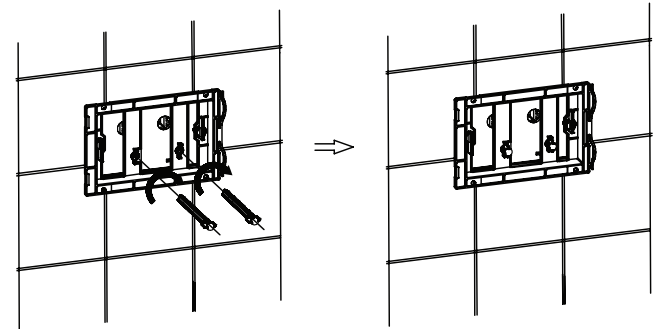
10

### Installation of the control plate base and connecting levers for the flush button



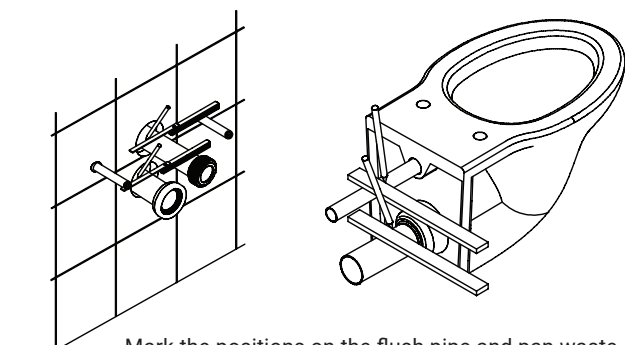
11

### Insert mounting levers, turn clockwise to secure



12

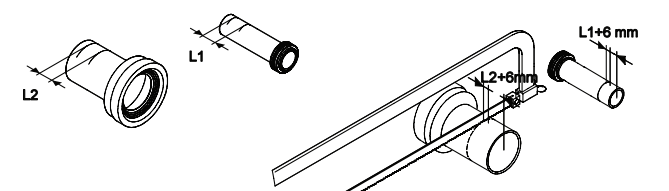
### Preparation of the wall-hung toilet



Mark the positions on the flush pipe and pan waste pipe using a pencil

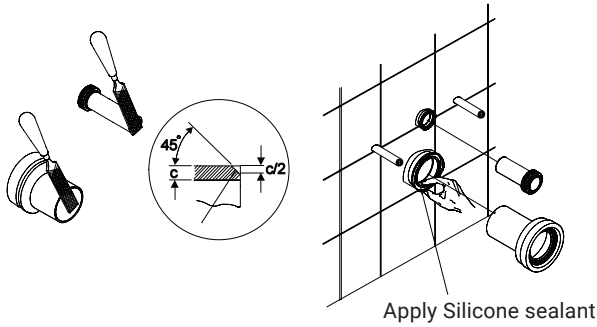
13

### Measure and cut the flush pipe and waste outlet



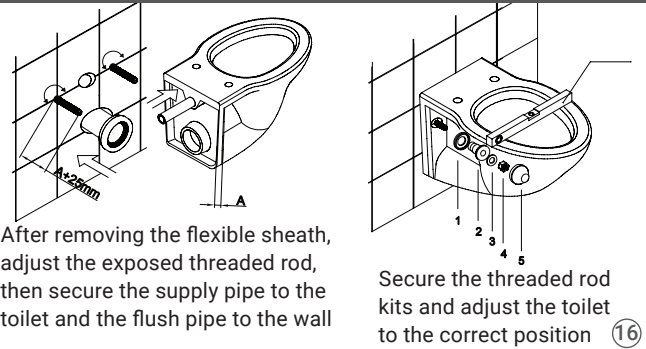
14

### Add a chamfer to the end of the flush and waste pipes



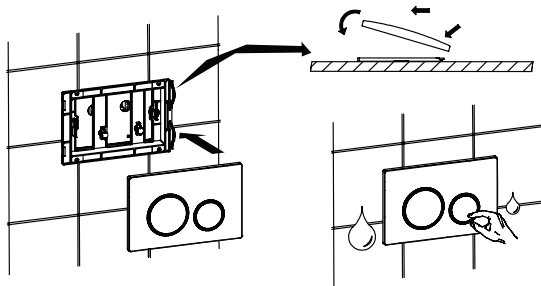
15

### Fixing the toilet back to the wall



16

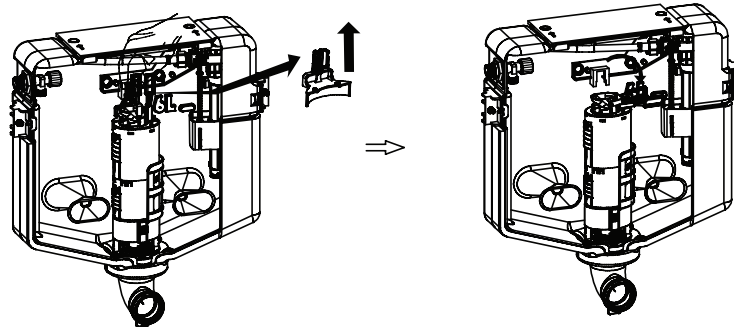
### Install control plate



17

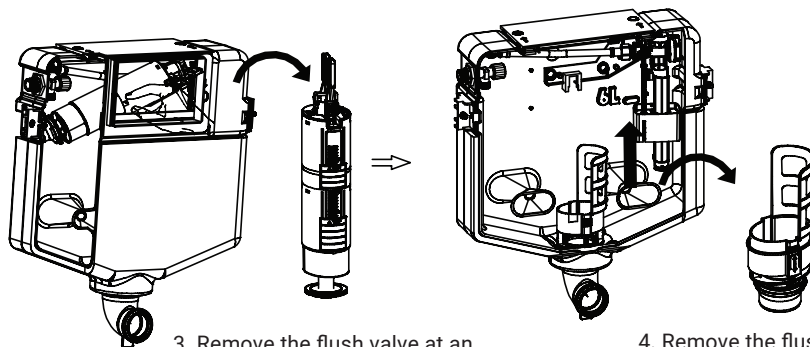
## MAINTENANCE

### Adjusting and removing the cistern fittings



1. Remove the pressure lever from the flush valve

2. Turn the large flush lever and the small flush lever

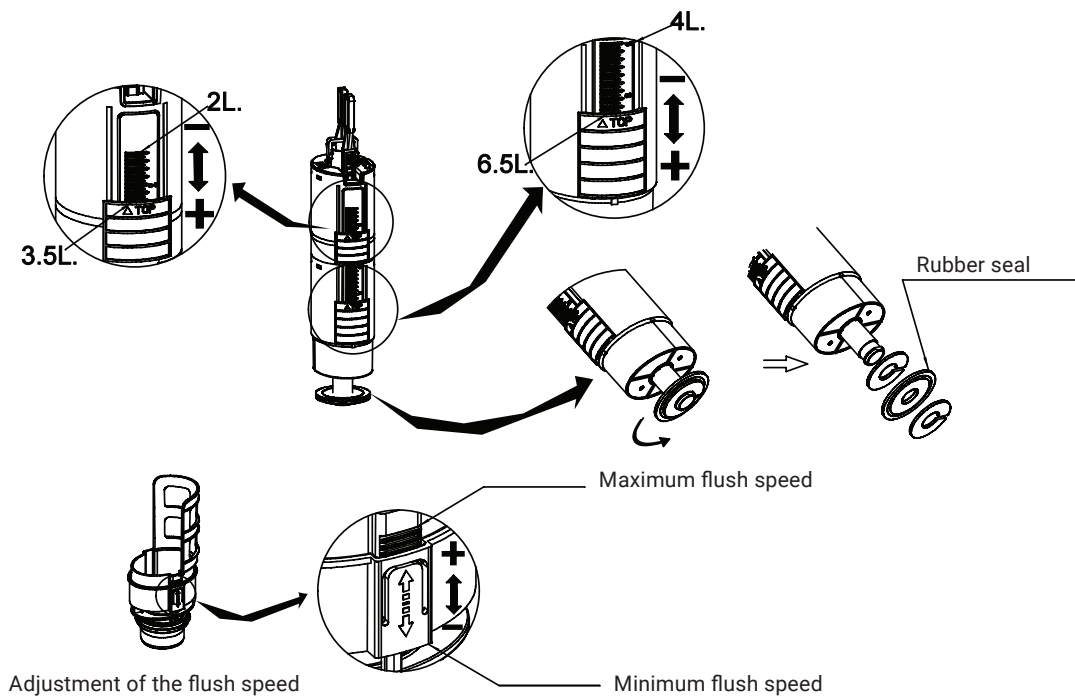


3. Remove the flush valve at an appropriate angle

4. Remove the flush valve base

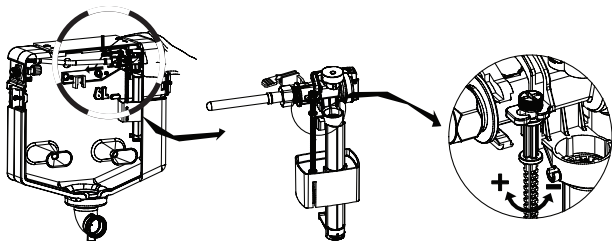
1

## Flush valve water level adjustment



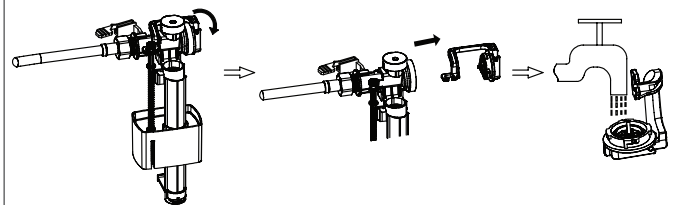
②

## Adjusting the water level



③

## Removing the fill valve



The fill valve can be removed and cleaned if the water fills slowly or does not stop

④

## Environment Protection and Waste Protection

Recycle unwanted packaging materials. When this product is no longer required, or has reached the end of its useful life, please dispose of it in an environmentally friendly way. Drain any fluids (if applicable) into approved containers, in accordance with local waste regulations. It is our policy to continually improve products and we reserve the right to alter data, specifications and parts without prior notice. No liability is accepted for incorrect use of this product. Guarantee is 12 months from purchase date, proof of which is required for any claim.

Jack Sealey Ltd t/a Baridi, Kempson Way, Suffolk Business Park, Bury St Edmunds, Suffolk, IP32 7AR UK  
Jack Sealey (EU) Ltd t/a Baridi, Farney Street, Carrickmacross, Co. Monaghan, A81 PK68 Ireland  
Tel: 01284 757575 • Email: support@baridi.co.uk • Web: www.baridi.co.uk