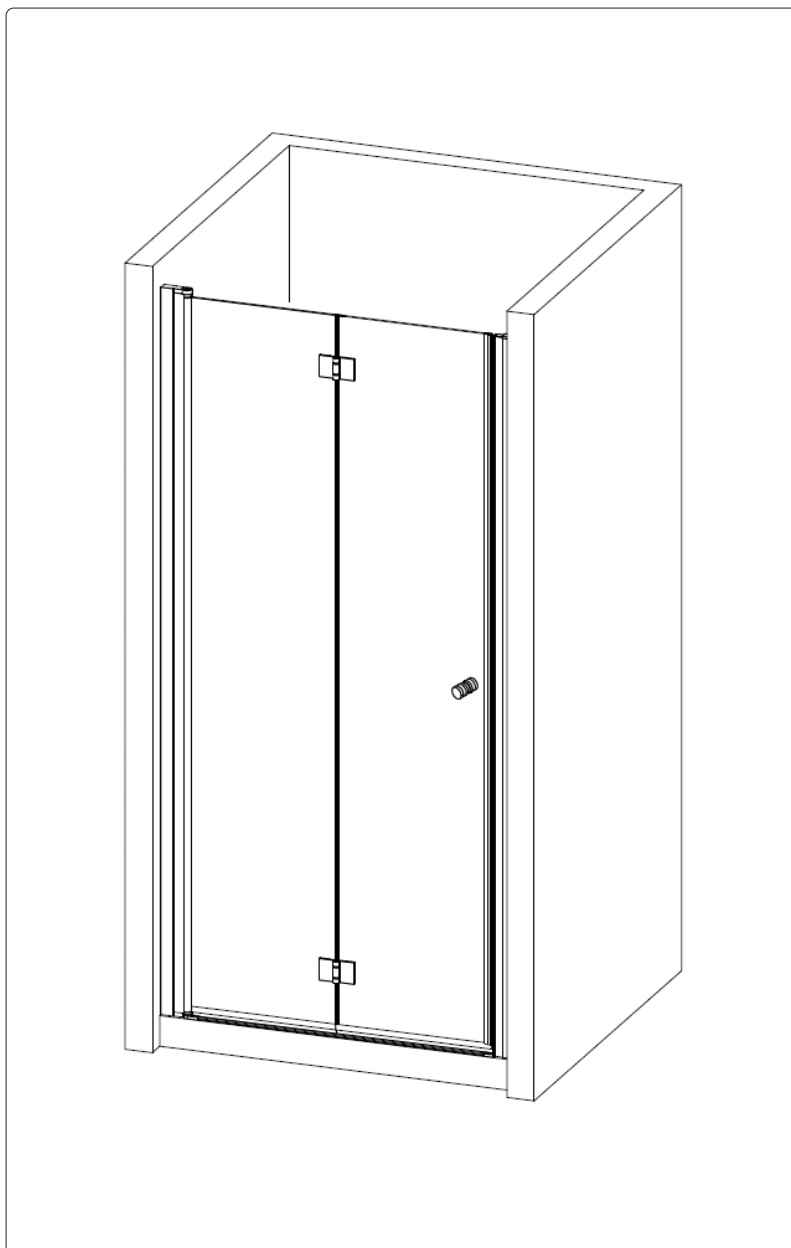




BI-Fold Shower Door 800 x 1850mm, 6mm Tempered Glass, Reversible - Chrome



Model No. DH305

Thank you for purchasing a Dellonda product. Manufactured to a high standard, this product will, if used according to these instructions, and properly maintained, give you years of trouble free performance.

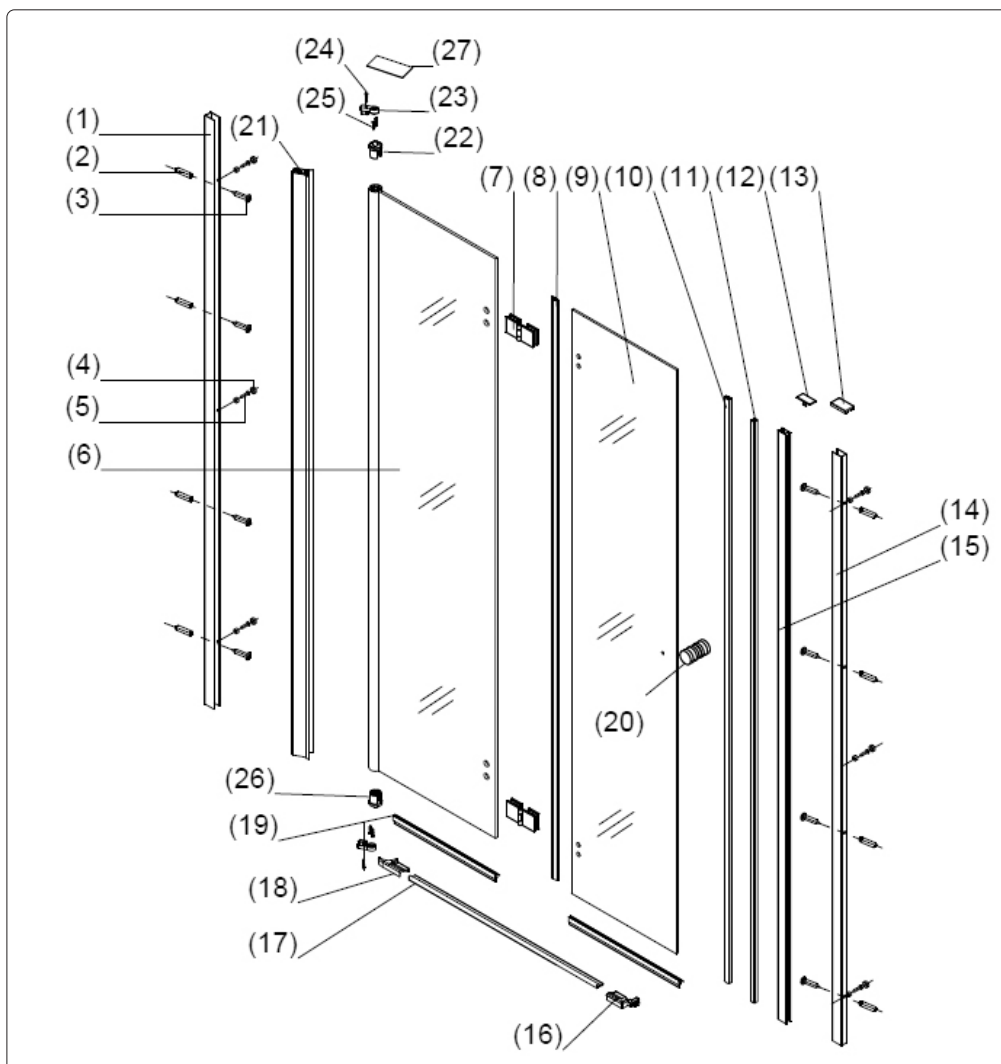
Important Information

Please read these instructions carefully and note any safe operational requirements, warnings & cautions. Use the product correctly and with care for the purpose for which it is intended. Failure to do so may cause damage and/or personal injury and will invalidate the warranty. Keep these instructions safe for future use.

Contents

Please check all components shown in the component checklist. If any components are missing or damaged. Contact your point of purchase for replacement.

NO.	Description	QTY	Diagram	NO.	Description	QTY	Diagram
1	Wall jamb	1		14	Wall jamb	1	
2	Wall anchor	8		15	Wall jamb	1	
3	Metric Screw(3.9x30)	8		16	Water retaining block	1	
4	Screw cover cap	6		17	Water retaining aluminium strip	1	
5	Metric Screw(3.9x10)	6		18	Water retaining block	1	
6	Glass	1		19	Water retaining rubber strip	2	
7	Hinge	2		20	Handle	1	
8	Water retaining rubber strip	1		21	Vertical aluminum material	1	
9	Glass	1		22	Spindle seat	1	
10	Magnetic adhesive strip	1		23	Metric Screw(3.5x25)	2	
11	Magnetic adhesive strip	1		24	Metric Screw(3.5x25)	2	
12	Decorative cover	1		25	Metric Screw(3.5x20)	4	
13	Decorative cover	1		26	Lower shaft core	1	
				27	Decoration	1	



Specification

- Colour of Product: **DH305 Glass / Chrome**
- Glass Thickness: 6mm
- Material: Aluminium Profile with Chrome Finish
- Nett Weight: 24kg
- Product Dimensions (W x D x H): 800 x 6 x 1850mm
- Type: Bi-Fold Shower Door

Safety

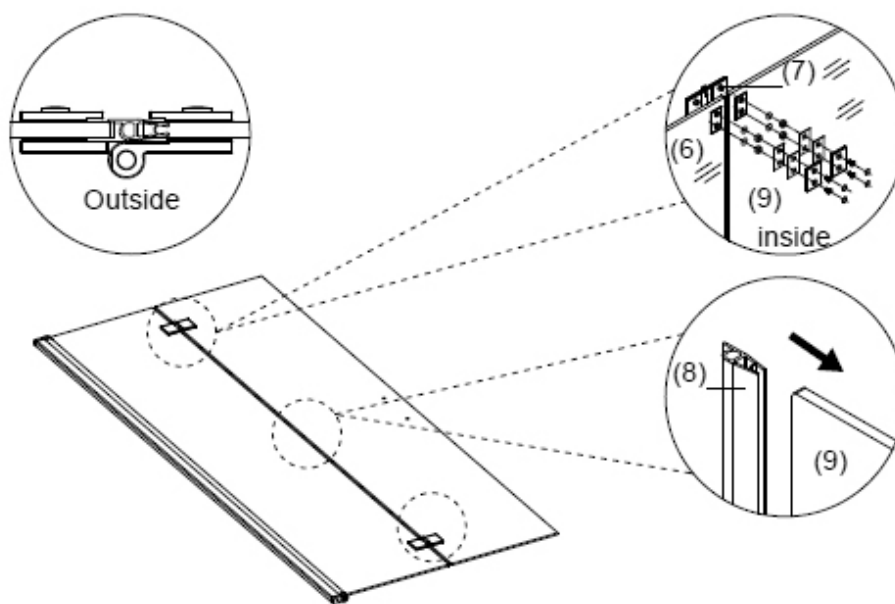
- **HANDLE GLASS WITH CARE.** Tempered glass is strong but can shatter if mishandled. Never set it directly on hard surfaces or strike the edges with tools.
- **INSPECT BEFORE INSTALLATION.** Check all parts for damage before starting. Damaged glass or components can pose serious risks.
- **Use Proper Tools and Gear** Always wear safety glasses when drilling or cutting. Use a spirit level, silicone gun, rubber mallet, and appropriate drill bits.
- **AVOID RUSHING THE SEALANT.** Allow silicone sealant to cure for at least 24–48 hours before using the shower to prevent leaks and ensure stability.
- **TWO-PERSON JOB.** Pivot doors are heavy and awkward to manoeuvre alone. Enlist help to avoid injury and ensure proper alignment.

Mistakes to Avoid

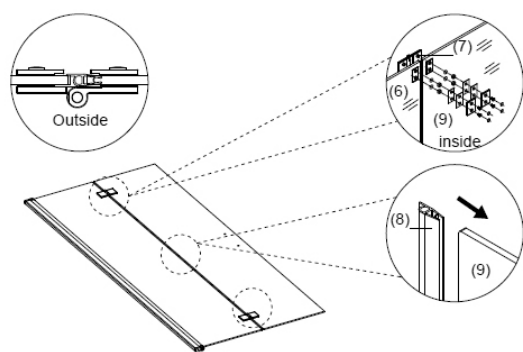
- **INCORRECT TRAY LEVELLING:** If the shower tray isn't perfectly level, the door may not close properly or seal correctly.
- **SKIPPING WALL CHECKS** Ensure walls are plumb and free of loose tiles or cracks. Uneven surfaces can compromise the door's function.
- **DO NOT** apply silicone inside the enclosure. Only seal external joints to prevent mould and mildew build-up.
- To preserve surfaces and ensure safety, avoid harsh or abrasive cleaners. Opt instead for gentle soap and water, which clean effectively without damaging finishes.

Assembly

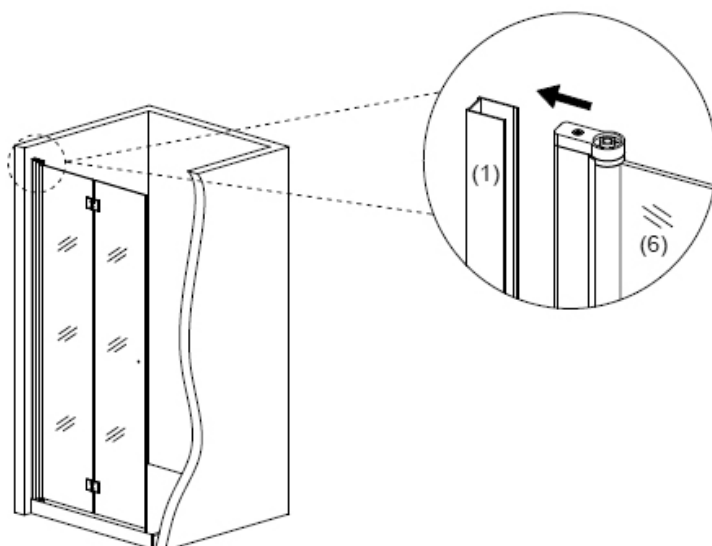
Step 1



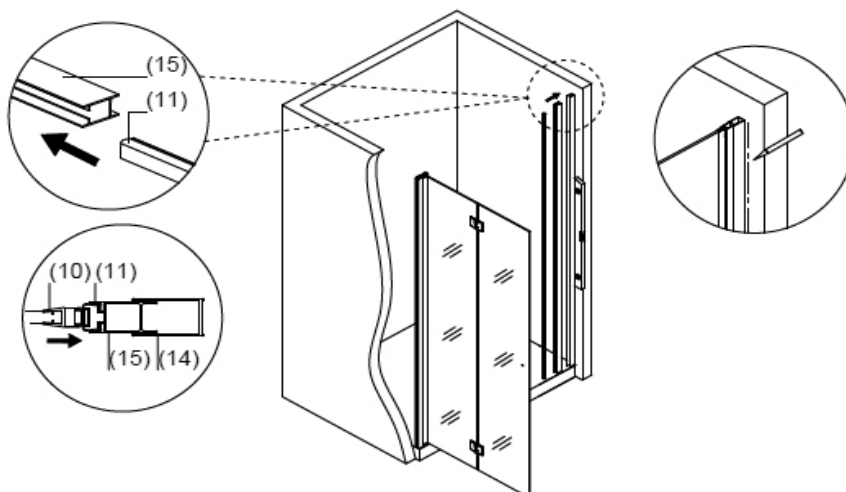
Step 2



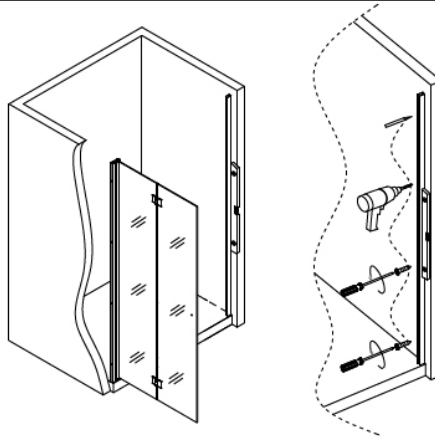
Step 3



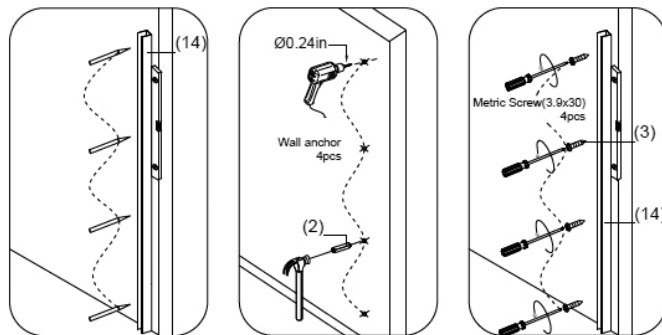
Step 4



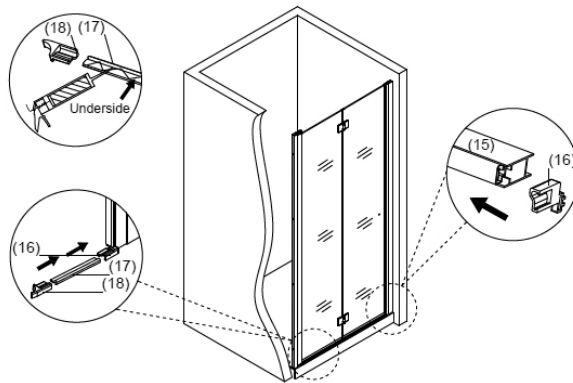
Step 5



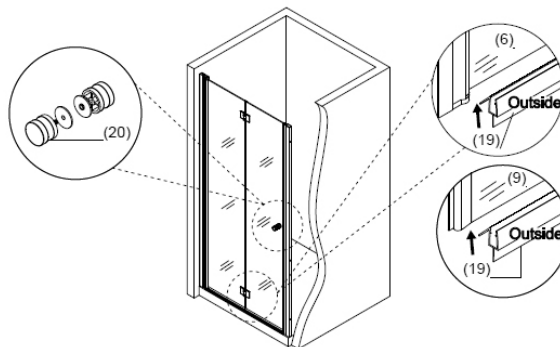
Step 6



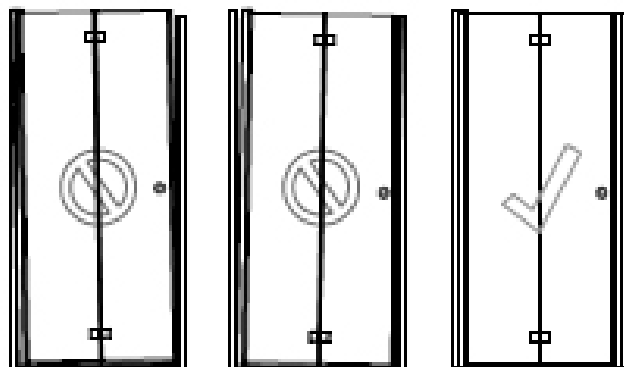
Step 7



Step 8

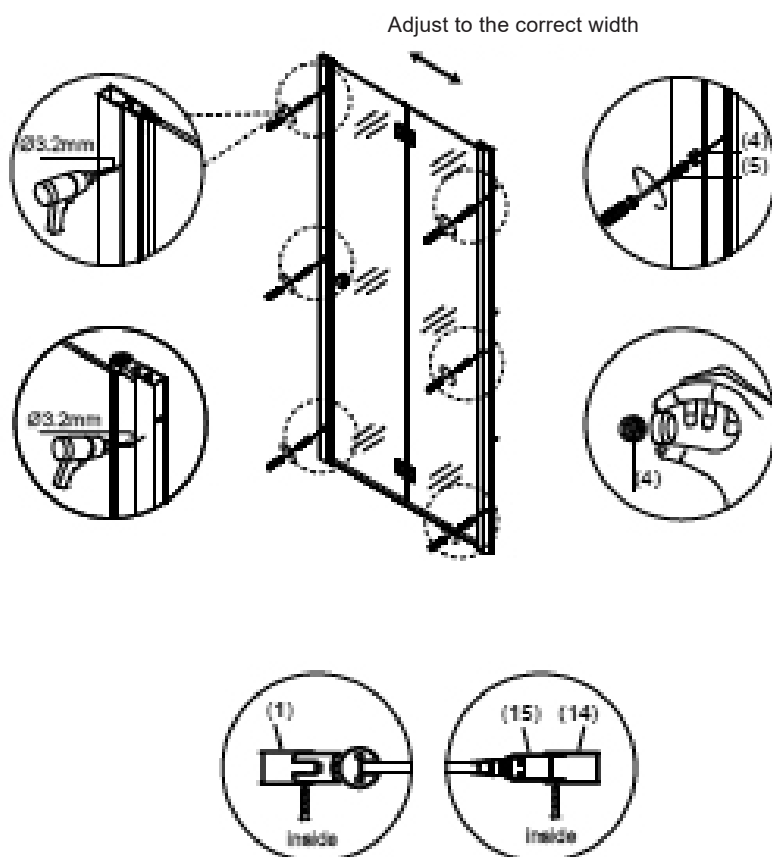


Step 9

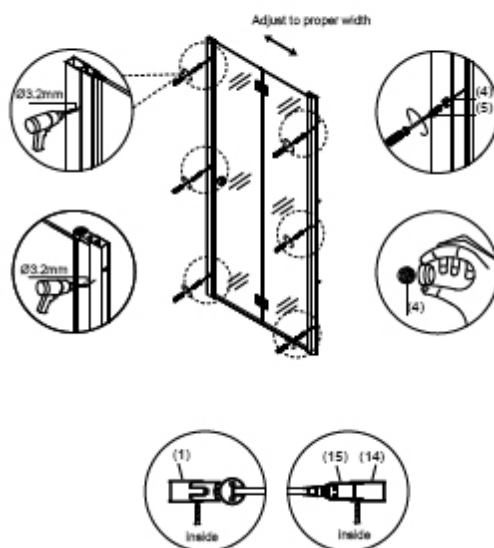


To ensure the magnetic strip seals firmly, slide the shower door slightly to the left or right until it aligns and connects securely.

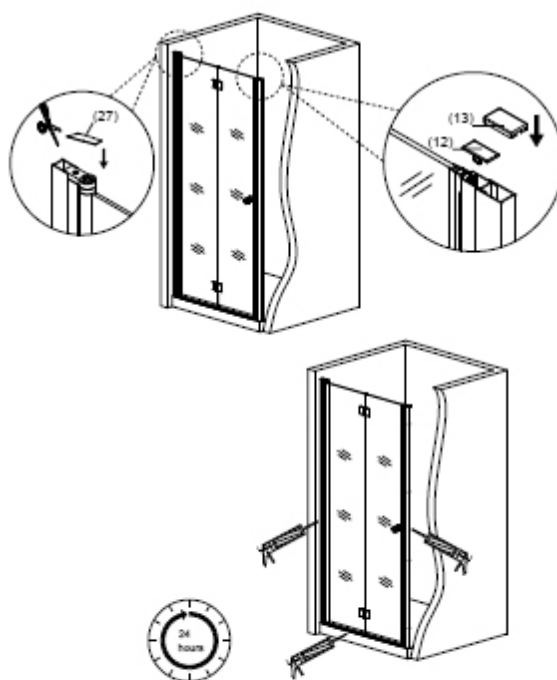
Step 10



Step 11



Step 12



Allow 24 hours for silicone to dry before use. Only apply silicone to the outside edge.

Environment Protection and Waste Protection

Recycle unwanted packaging materials. When this product is no longer required, or has reached the end of its useful life, please dispose of it in an environmentally friendly way. Drain any fluids (if applicable) into approved containers, in accordance with local waste regulations. It is our policy to continually improve products and we reserve the right to alter data, specifications and parts without prior notice. No liability is accepted for incorrect use of this product. Guarantee is 12 months from purchase date, proof of which is required for any claim.

Jack Sealey Ltd t/a Dellonda, Kempson Way, Suffolk Business Park, Bury St Edmunds, Suffolk, IP32 7AR UK

Jack Sealey (EU) Ltd t/a Dellonda, Farney Street, Carrickmacross, Co. Monaghan, A81 PK68 Ireland

Tel: 01284 757575 • Email: support@dellonda.co.uk • Web: www.dellonda.co.uk