



TM

# MODULAR 5 DRAWER MOBILE CABINET 650MM

MODEL NO: **APMS58.V2**

Thank you for purchasing a Sealey product. Manufactured to a high standard, this product will, if used according to these instructions, and properly maintained, give you years of trouble free performance.



**IMPORTANT:** PLEASE READ THESE INSTRUCTIONS CAREFULLY. NOTE THE SAFE OPERATIONAL REQUIREMENTS, WARNINGS & CAUTIONS. USE THE PRODUCT CORRECTLY AND WITH CARE FOR THE PURPOSE FOR WHICH IT IS INTENDED. FAILURE TO DO SO MAY CAUSE DAMAGE AND/OR PERSONAL INJURY AND WILL INVALIDATE THE WARRANTY. KEEP THESE INSTRUCTIONS SAFE FOR FUTURE USE.

## 1. SAFETY

- ☐ **WARNING!** Ensure Health & Safety, local authority, and general workshop practice regulations are adhered to when using this product.
- ✗ **DO NOT** open more than one drawer at a time.
- ✗ **DO NOT** step on the drawers.
- ✓ Ensure all drawers are fully closed before moving the cabinet.
- ✓ Secure the brakes when cabinet is in the desired position.
- ✓ Keep the work area clean, uncluttered and ensure there is adequate lighting.
- ✗ **DO NOT** use in damp work areas.
- ✗ **DO NOT** use the cabinet for any purpose other than that for which it was designed.
- ✗ **DO NOT** use the cabinet outdoors.
- ✗ **DO NOT** clean the cabinet with any solvents which may damage the surfaces or the protective coating.
- ✗ **DO NOT** clean with detergents or tap water, only distilled water should be used.
- ☐ **WARNING!** The warnings, cautions and instructions referred to in this instruction manual cannot cover all possible conditions and situations that may occur. It must be understood that common sense and caution are factors which cannot be built into this product, but must be applied by the operator

## 2. INTRODUCTION

Use as part of a complete garage storage system or as an individual storage unit. Five drawer mobile cabinet. All drawers fitted with ball-bearing slides. Four swivel castors with one brake. Aluminium handles. High quality lock with two keys.

## 3. SPECIFICATION

Model No:.....**APMS58.V2**  
Overall Size:.....650 x 460 x 860mm  
Small Drawer (x2): .....565 x 400 x 60mm  
Large Drawer (x3): .....565 x 400 x 135mm

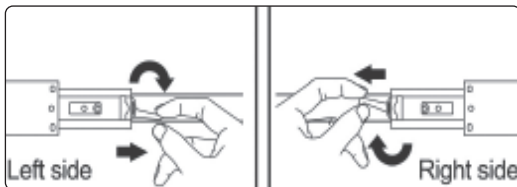
## 4. ASSEMBLY

### 4.1. FIT CASTORS

Carefully lay the cabinet onto its back. Use the outer packaging to prevent damage. Use screws from underneath to fix castors onto the cabinet. Fit the braked castor on the front corner of unit.

### 4.2. REMOVE DRAWERS (FIG.1)

Push the tab down on the left side and up on right side. Pull the drawer from the slide.

**FIG.1**

### ENVIRONMENT PROTECTION

Recycle unwanted materials instead of disposing of them as waste. All tools, accessories and packaging should be sorted, taken to a recycling centre and disposed of in a manner which is compatible with the environment. When the product becomes completely unserviceable and requires disposal, drain any fluids (if applicable) into approved containers and dispose of the product and fluids according to local regulations.



REGISTER YOUR  
PURCHASE HERE

**Note:** It is our policy to continually improve products and as such we reserve the right to alter data, specifications and component parts without prior notice. Please note that other versions of this product are available. If you require documentation for alternative versions, please email or call our technical team on [technical@sealey.co.uk](mailto:technical@sealey.co.uk) or 01284 757505. Important: No Liability is accepted for incorrect use of this product.

**Warranty:** Guarantee is 60 months from purchase date, proof of which is required for any claim.

Jack Sealey Ltd t/a Sealey Group, Kempson Way, Suffolk Business Park, Bury St Edmunds, Suffolk, IP32 7AR UK

Jack Sealey (EU) Ltd t/a Sealey Group, Farney Street, Carrickmacross, Co. Monaghan, A81 PK68 Ireland

Tel: 01284 757500 • Email: [sales@sealey.co.uk](mailto:sales@sealey.co.uk) • Web: [www.sealey.co.uk](http://www.sealey.co.uk)