



STEEL WORKBENCH WITH PEGBOARD 1M

MODEL NO: **AP12601**

Thank you for purchasing a Sealey product. Manufactured to a high standard, this product will, if used according to these instructions, and properly maintained, give you years of trouble free performance.

IMPORTANT: PLEASE READ THESE INSTRUCTIONS CAREFULLY. NOTE THE SAFE OPERATIONAL REQUIREMENTS, WARNINGS & CAUTIONS. USE THE PRODUCT CORRECTLY AND WITH CARE FOR THE PURPOSE FOR WHICH IT IS INTENDED. FAILURE TO DO SO MAY CAUSE DAMAGE AND/OR PERSONAL INJURY AND WILL INVALIDATE THE WARRANTY. KEEP THESE INSTRUCTIONS SAFE FOR FUTURE USE.



Refer to
instructions



Wear protective
gloves

1. SAFETY

- ☐ **WARNING!** Ensure Health & Safety, local authority, and general workshop practice regulations are adhered to when using this bench.
- ✓ Locate bench in a suitable work area.
- ✓ Keep the work area clean, uncluttered and ensure there is adequate lighting.
- ☐ **WARNING!** Use bench on level and solid ground, preferably concrete.
- ✓ Keep the bench clean and tidy in accordance with good workshop practice.
- ✓ Keep children and unauthorised persons away from the work area.
- ✗ **DO NOT** use the bench for any purpose other than that for which it is designed.
- ✗ **DO NOT** undertake work on the bench without the workpiece being adequately secured. Use clamps or a vice (not included) to secure the workpiece - available from your Sealey Stockist.
- ✗ **DO NOT** use the bench outdoors.
- ✗ **DO NOT** get the bench wet or use in damp or wet locations or areas where there is condensation.
- ✗ **DO NOT** exceed the maximum load for the work surfaces, 200kg capacity per level gives a maximum capacity of 600kg per workbench.
- ✗ **DO NOT** clean the bench with any solvents which may damage the surface or the protective coating on the worktop.

2. INTRODUCTION

Durable steel frame with a black powder-coat finish to enhanced rust resistance, durability, and long-lasting performance. 3-Tier Design, two spacious shelves with a sturdy 5mm MDF worktop, ideal for tools, parts, and equipment. Includes pegboard with five large parts trays, four small parts trays, and ten hooks for efficient tool organisation. Assembles quickly with a slot-in system.

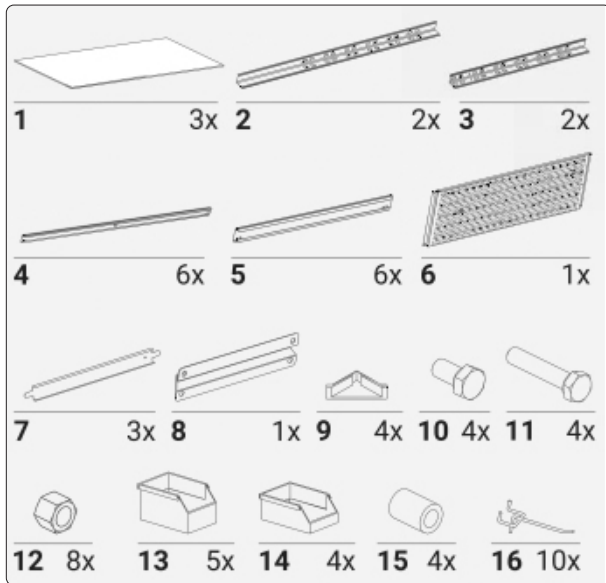
3. SPECIFICATION

Model No:	AP12601
Nett Weight:	13kg
Overall Size (W x D x H):	1000 x 400 x 1360mm
Maximum Capacity:	600kg (200kg/Level)



4. CONTENTS

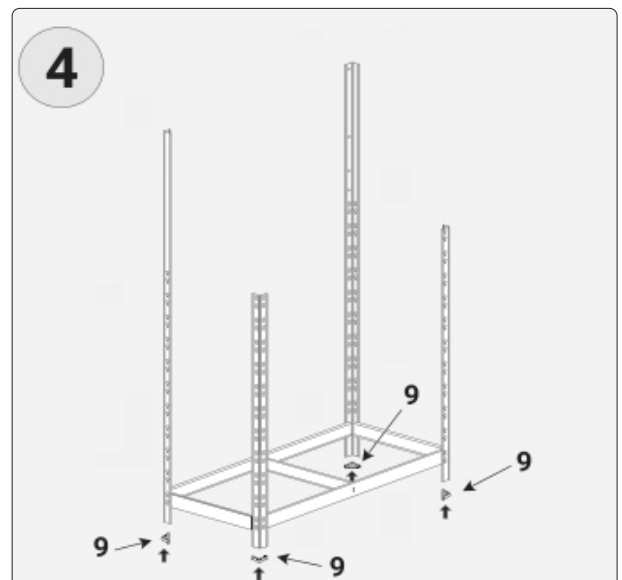
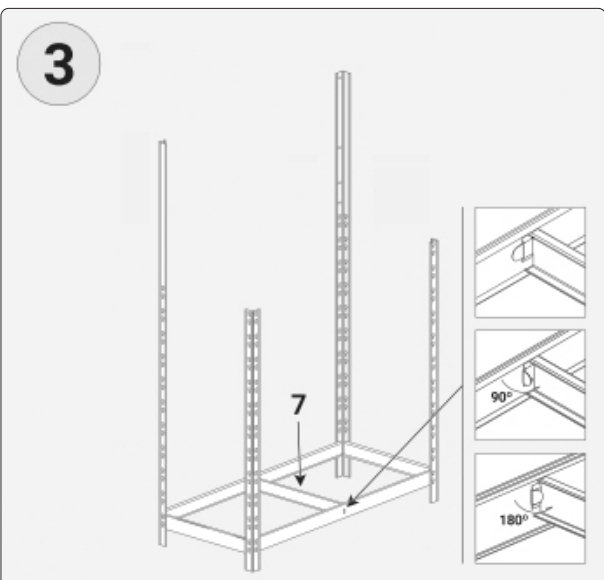
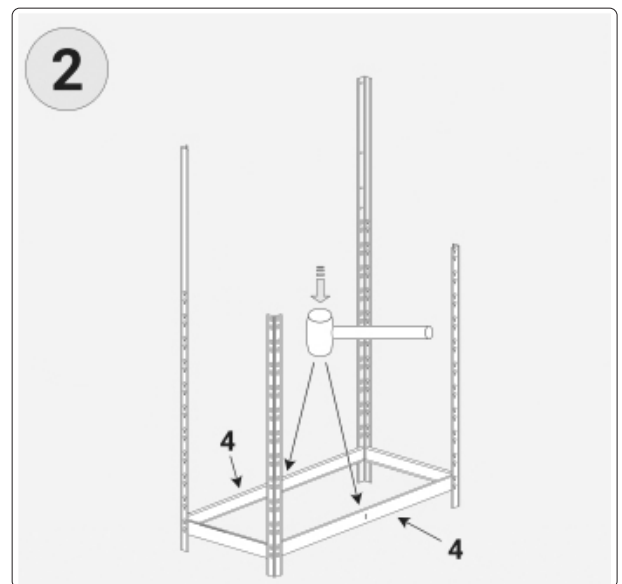
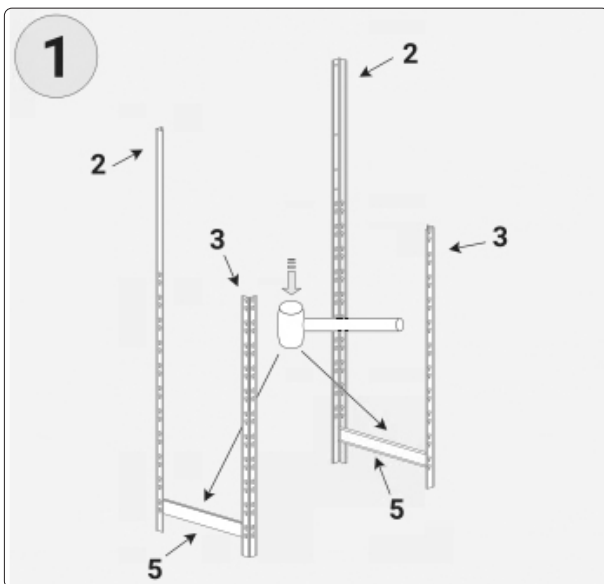
Unpack the product and check the contents against the list below. Should any items be missing or damaged contact your Sealey Stockist.

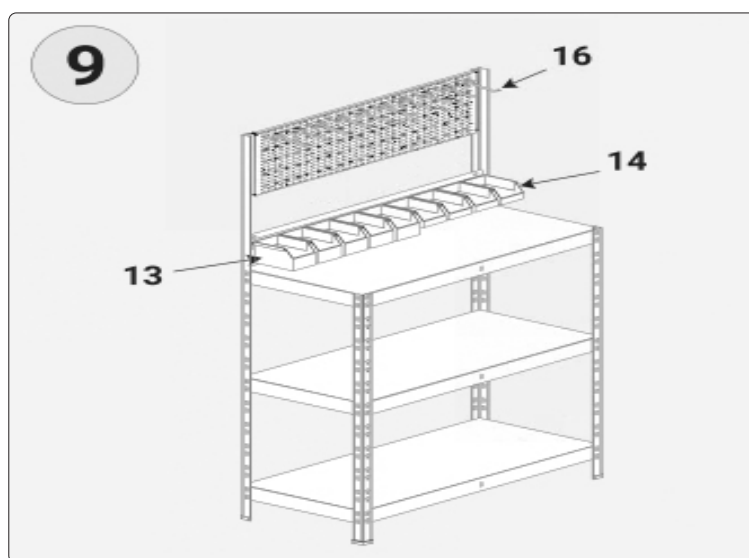
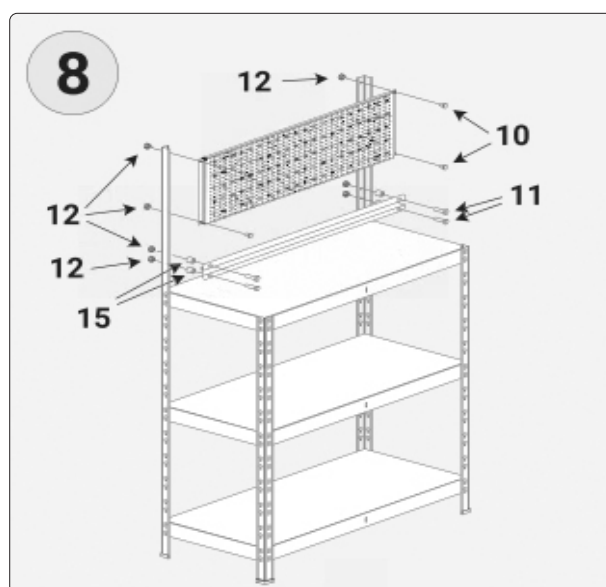
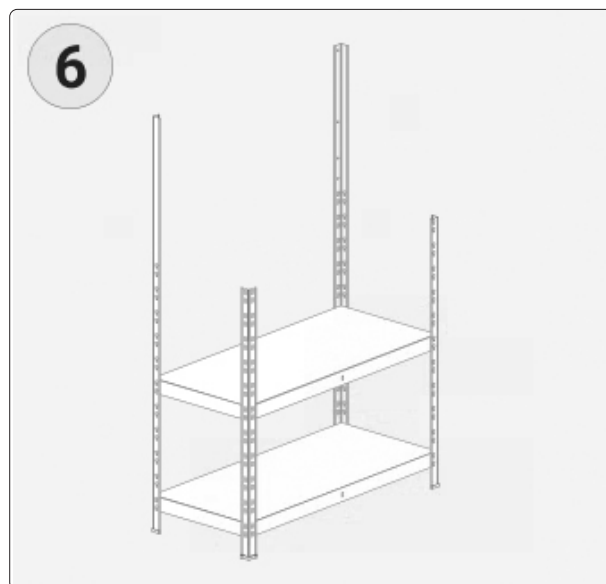
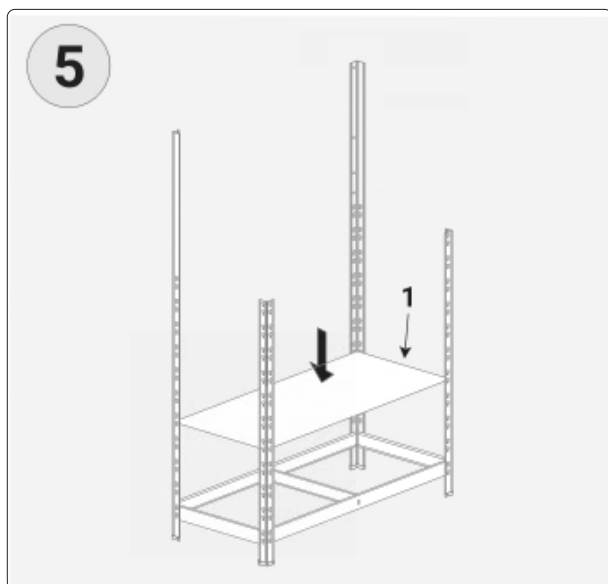


5. ASSEMBLY

5.1 Study each diagram and identify the components required with reference to the contents table on above.

5.2 Build up the basic frame as shown in diagrams 1,2,3,4,5,6,7,8,9.





6. MAINTENANCE

6.1. REGULAR INSPECTION

- 6.1.1. Check for damage: Look for bent frames, corrosion, or missing fasteners, especially in high-stress areas.
- 6.1.2. Inspect weight-bearing points: These are most prone to wear and structural compromise.

6.2. CLEANING & PROTECTION

- 6.2.1. Clean frequently: Use mild detergent and water to remove dirt and grime. Dry thoroughly before use.

6.3. WEIGHT MANAGEMENT

- 6.3.1. Distribute evenly: Avoid piling components unevenly. Stick strictly to the 200kg per level limit.
- 6.3.2. Avoid overloading: Overloading can cause bending, instability, or collapse.

6.4. FASTENERS & COMPONENTS

- 6.4.1. Tighten regularly: Bolts and screws can loosen over time, check and tighten them periodically.
- 6.4.2. Replace worn parts

6.5. STAFF TRAINING & SAFETY

- 6.5.1. Educate users: Train staff on proper loading/unloading and weight limits.
- 6.5.2. Routine checks: Establish regular safety inspections and maintenance reporting.

6.6. STORAGE BEST PRACTICES

- 6.6.1. Store upright

6.7. ENVIRONMENTAL CONTROL

- 6.7.1. Dry, ventilated space: Avoid direct sunlight, heat sources, ozone-producing equipment, and chemicals.

6.8. IMPACT PROTECTION

- 6.8.1. Install guards: Use safety shields to protect the rack from forklifts or other vehicles



ENVIRONMENT PROTECTION

Recycle unwanted materials instead of disposing of them as waste. All tools, accessories and packaging should be sorted, taken to a recycling centre and disposed of in a manner which is compatible with the environment. When the product becomes completely unserviceable and requires disposal, drain any fluids (if applicable) into approved containers and dispose of the product and fluids according to local regulations.



REGISTER YOUR
PURCHASE HERE

NOTE: It is our policy to continually improve products and as such we reserve the right to alter data, specifications and component parts without prior notice. Please note that other versions of this product are available. If you require documentation for alternative versions, please Email or call our technical team on technical@sealey.co.uk or 01284 757505.

IMPORTANT: No Liability is accepted for incorrect use of this product.

WARRANTY: Guarantee is 12 months from purchase date, proof of which is required for any claim.

Jack Sealey Ltd t/a Sealey Group, Kempson Way, Suffolk Business Park, Bury St Edmunds, Suffolk, IP32 7AR UK
Jack Sealey (EU) Ltd t/a Sealey Group, Farney Street, Carrickmacross, Co. Monaghan, A81 PK68 Ireland
Tel: 01284 757500 • **Email:** sales@sealey.co.uk • **Web:** www.sealey.co.uk